

FEATURES AND SPECIFICATIONS

Features and Benefits

- Sizes 2 to 25 circuits
- Locking crown secures positive latch to header
- Polarization slots guide front ribs of mating connector to prevent pin damage
- Standoffs minimize flux retention
- Surface Mount Compatible

Electrical

Voltage: 250V
 Current: 3.0A
 Contact Resistance: 15mΩ max.
 Dielectric Withstanding Voltage: 1500V
 Insulation Resistance: 1000 MΩ min.

Mechanical

Durability: Tin—25 cycles; Gold—50 cycles

Physical

Housing: Black glass-filled PCT, UL 94V-0
 Contact: Phosphor Bronze, .025" square
 Plating: See Table
 Operating Temperature: -40 to +105°C



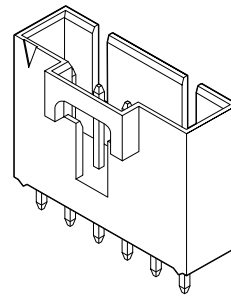
2.54mm (.100") Pitch

SL™

**Wire-to-Board
Shrouded Header**

70543

**Single Row, .120" Pocket
Vertical**



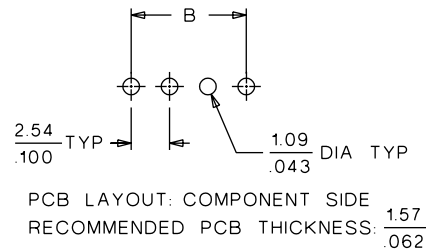
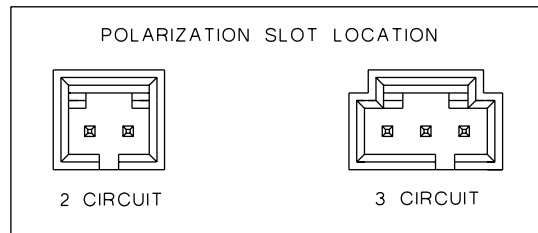
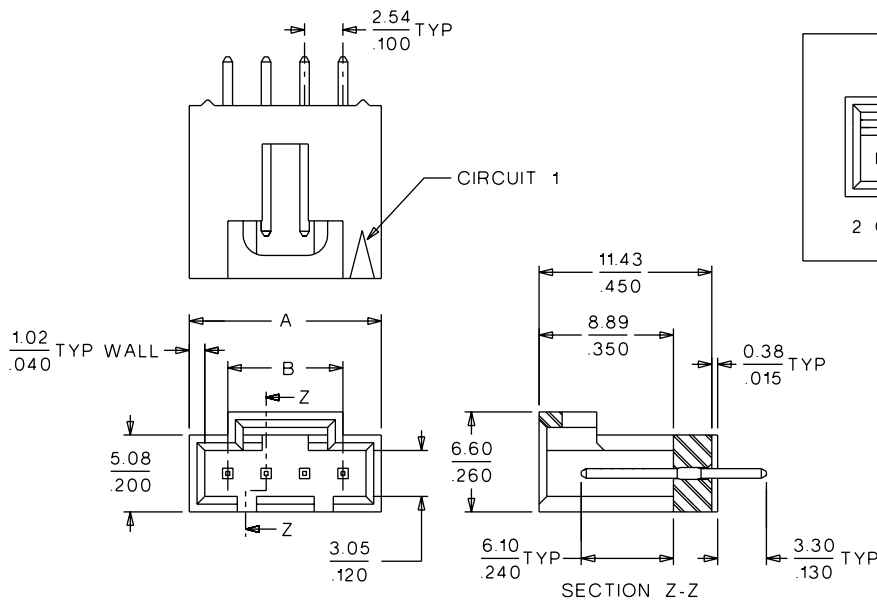
2.54mm (.100") Pitch

Reference Information

Product Specification: PS-70541
 Packaging: Tube
 UL File No.: E29179
 CSA File No.: LR19980
 Mates With: 70066G, 70066N, 70400G and 70430G
 Designed In: Inches

CATALOG DRAWING (FOR REFERENCE ONLY)

Not For Use With C-Grid III™ Components



ORDERING INFORMATION AND DIMENSIONS

Circuits	Order No.			Dimension	
	15µ" Min. Gold	30µ" Min. Gold	150µ" Tin/Lead	A	B
2	• 70543-0001	70543-0106	70543-0036	7.37 (.290)	2.54 (.100)
3	• 70543-0002	70543-0107	70543-0037	10.17 (.400)	5.08 (.200)
4	• 70543-0003	70543-0108	70543-0038	12.71 (.500)	7.62 (.300)
5	• 70543-0004	70543-0109	70543-0039	15.25 (.600)	10.16 (.400)
6	• 70543-0005	70543-0110	70543-0040	17.79 (.700)	12.70 (.500)
7	• 70543-0006	70543-0111	70543-0041	20.33 (.800)	15.24 (.600)
8	• 70543-0007	70543-0112	70543-0042	22.87 (.900)	17.78 (.700)
9	• 70543-0008	70543-0113	70543-0043	25.41 (1.000)	20.32 (.800)
10	• 70543-0009	70543-0114	70543-0044	27.95 (1.100)	22.86 (.900)
11	• 70543-0010	70543-0115	70543-0045	30.49 (1.200)	25.40 (1.000)
12	• 70543-0011	70543-0116	70543-0046	33.03 (1.300)	27.94 (1.100)
13	• 70543-0012	70543-0117	70543-0047	35.57 (1.400)	30.48 (1.200)

Circuits	Order No.			Dimension	
	15µ" Min. Gold	30µ" Min. Gold	150µ" Tin/Lead	A	B
14	• 70543-0013	70543-0118	70543-0048	38.11 (1.500)	33.02 (1.300)
15	• 70543-0014	70543-0119	70543-0049	40.65 (1.600)	35.56 (1.400)
16	• 70543-0015	70543-0120	70543-0050	43.19 (1.700)	38.10 (1.500)
17	• 70543-0016	70543-0121	70543-0051	45.73 (1.800)	40.64 (1.600)
18	• 70543-0017	70543-0122	70543-0052	48.27 (1.900)	43.18 (1.700)
19	• 70543-0018	70543-0123	70543-0053	50.81 (2.000)	45.72 (1.800)
20	• 70543-0019	70543-0124	70543-0054	53.35 (2.100)	48.26 (1.900)
21	• 70543-0020	70543-0125	70543-0055	55.89 (2.200)	50.80 (2.000)
22	• 70543-0021	70543-0126	70543-0056	58.43 (2.300)	53.34 (2.100)
23	• 70543-0022	70543-0127	70543-0057	60.97 (2.400)	55.88 (2.200)
24	• 70543-0023	70543-0128	70543-0058	63.51 (2.500)	58.42 (2.300)
25	• 70543-0024	70543-0129	70543-0059	66.05 (2.600)	60.96 (2.400)

• US Standard Product, available through Molex franchised distributors