

Monolithic crystal filter

MQF45.0-1600/02



Application

- 4 pol filter
- i.f.- filter
- use in mobile and stationary transceivers

Limiting values

		Unit	Value
Nominal frequency	f_0	MHz	45.0
Insertion loss		dB	< 3.0
Pass band at 3.0dB		kHz	$\pm > 8$
Ripple in pass band	$f_0 \pm 5$ kHz	dB	< 1.0
Stop band attenuation	$f_0 \pm 25$ kHz	dB	> 30
Alternate attenuation	$f_0 - 910$ kHz	dB	> 90

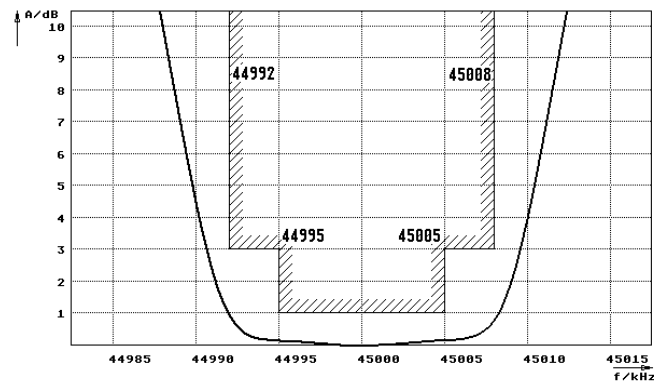
Terminating impedance Z

R1 C1		Ohm/pF	700 2
R2 C2		Ohm/pF	700 2
Coupling capacitance	Ck	pF	10.0 \pm 10%

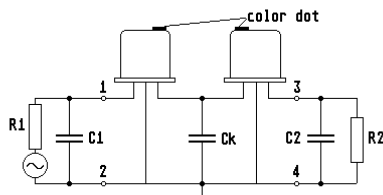
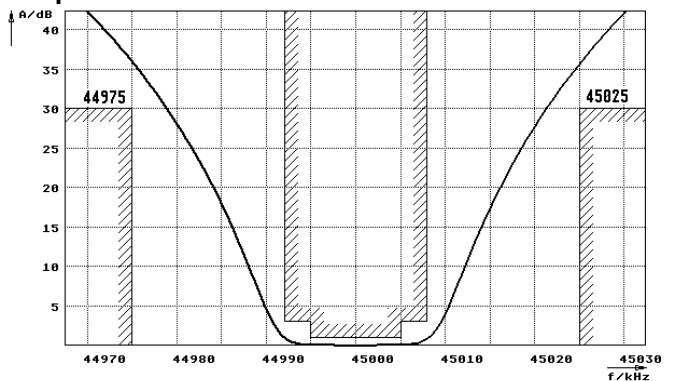
Operating temp. range		°C	-25... +70
Storage temp. range		°C	-55... +80
Environment conditions			according to CF001

Characteristics MQF45.0-1600/02

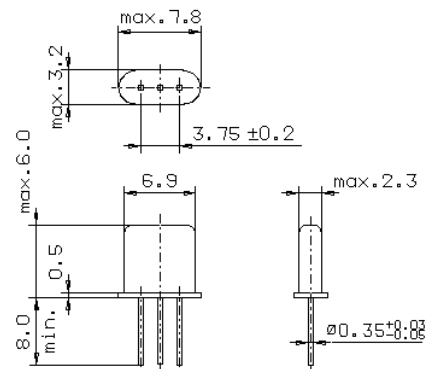
Pass band



Stop band



- Pin connections:
- 1 Input
 - 2 Ground-Input
 - 3 Output
 - 4 Ground-Output



GH12