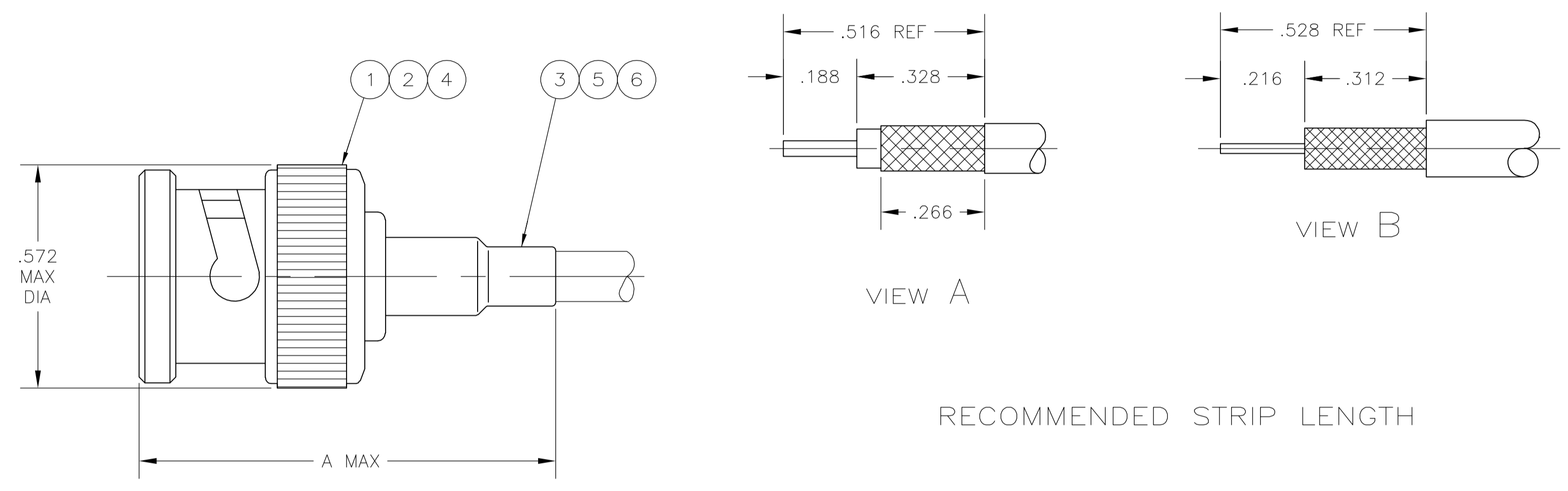


- ① CABLE USED WITHOUT SPACER
- ② CABLE USED WITH SPACER
- 3. SEE I.S. 2798
- 4. PARTS PACKAGED UNASSEMBLED
- ⑤ USE WITH HAND TOOL FRAME 354940-1
- ⑥ USE WITH HANDTOOL 69710-1, OR PNEUMATIC TOOL 69365 & 69365-3



<del>OBSOLETE</del>	BELDEN 89907	-	318452-2	-	A	1.312	-	-	9-228783-0	1-221607-6	227074-1	1-1274574-3
<del>OBSOLETE</del>	BELDEN 89907	-	318452-2	-	A	1.312	-	-	9-228783-0	1-221607-6	227074-1	1-1274574-2
<del>OBSOLETE</del>	BELDEN 9907 AND RG-141A/U	220217-1	220189-1	220187-1	A	1.090	-	-	9-50427-1	1-221607-6	227074-1	1-1274574-1
	BELDEN 9248 & 9114	-	220244-1	220247-1	A	1.090	-	-	9-50427-0	1-221607-6	413530-3	1-1274574-0
<del>OBSOLETE</del>	RG-179/U & 187/U	220217-3	220210-1	220009-5	A	1.090	227194-1	-	9-328666-0	227322-4	227074-2	1274574-9
<del>OBSOLETE</del>	RG-174/U & 188/U	220217-3	220210-1	220009-5	A	1.090	227194-1	-	9-328666-0	227322-8	227074-2	1274574-8
<del>OBSOLETE</del>	RG-174/U & 188/U	220217-3	220210-1	220009-5	A	1.090	227194-1	-	9-328666-0	9-227322-0	413530-6	1274574-7
<del>OBSOLETE</del>	RG-58/U,58A/U,58B/U,58C/U & 141/U	220217-1	220189-1	220187-1	A	1.090	-	-	9-50427-1	221607-7	227074-1	1274574-6
<del>OBSOLETE</del>	① RG-59/U,59A/U & 59B/U	220217-2	220189-2	220187-2	A	1.090	-	227423-1	9-50428-0	221607-6	227080-1	1274574-5
<del>OBSOLETE</del>	② RG-62/U,62A/U & 62B/U				B							
<del>OBSOLETE</del>	RG-55/U,55A/U,55B/U, & 223/U	220217-1	220189-1	220187-1	A	1.280	-	-	9-225382-0	221607-5	227074-1	1274574-4
<del>OBSOLETE</del>	RG-58/U,58A/U,58B/U,58C/U & 141/U	220217-1	220189-1	220187-1	A	1.090	-	-	9-50427-1	221607-5	227074-1	1274574-3
<del>OBSOLETE</del>	① RG-59/U,59A/U & 59B/U	220217-2	220189-2	220187-2	A	1.090	-	227423-1	9-50428-0	9-221607-1	413530-2	1274574-2
<del>OBSOLETE</del>	② RG-62/U,62A/U & 62B/U				B							
<del>OBSOLETE</del>	RG-58/U,58A/U,58B/U,58C/U & 141/U	220217-1	220189-1	220187-1	A	1.090	-	-	9-50427-1	9-221607-0	227074-1	1274574-1

CABLE SIZE	DIE SET ⑥	DIE SET ⑤	CRIMP TOOL	VIEW	A	⑤ TUBING QTY=1	④ SPACER QTY=1	③ FERRULE QTY=1	② CONTACT, PLUG QTY=1	① PLUG ASSY, COML BNC QTY=1	PART NUMBER
------------	-----------	-----------	------------	------	---	----------------	----------------	-----------------	-----------------------	-----------------------------	-------------

THIS DRAWING IS A CONTROLLED DOCUMENT.

DIMENSIONS: INCHES	TOLERANCES UNLESS OTHERWISE SPECIFIED:	DIN R SAMICK 30SEP03		Tyco Electronics Corporation Harrisburg, PA 17105-3608		
0 PLC ± -	1 PLC ± -	CHK D GRAVINA 30SEP03		NAME		
2 PLC ± -	3 PLC ± .016	APP'D D GRAVINA 30SEP03	PRODUCT SPEC	108-12044		
4 PLC ± -	ANGLES ± -		APPLICATION SPEC			
MATERIAL	FINISH	WEIGHT	SIZE	CAGE CODE	DRAWING NO	RESTRICTED TO
-	-	-	A1	00779	1274574	-
CUSTOMER DRAWING			SCALE	SHEET	REV	A1
			4:1	1 of 1		