

Monolithic crystal filter

MQF21.4-1200/15



Application

- 6 pol filter
- i.f.- filter
- use in mobile and stationary transceivers

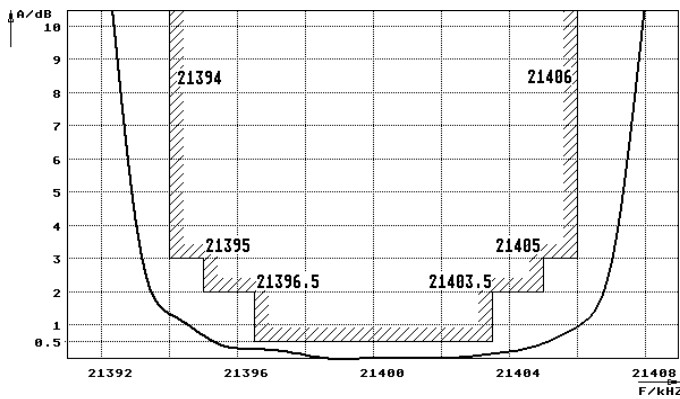
Limiting values

		Unit	Value
Center frequency	f_0	MHz	21.4
Insertion loss		dB	≤ 2.5
Pass band at 3.0 dB		kHz	± 6.0
Ripple in pass band	$f_0 \pm 5.0$ kHz	dB	≤ 2.0
Stop band attenuation	$f_0 \pm 14$ kHz	dB	≥ 45
	$f_0 \pm 20$ kHz	dB	> 65
Alternate attenuation	$f_0 \pm 20 \dots 300$ kHz	dB	> 65
IMD at $P_o = -7$ dBm	$f_1 = f_0 \pm 20$ kHz	dB	> 75
	$f_2 = f_0 \pm 40$ kHz		
Terminating impedance Z			
R1 C1		Ohm/pF	1200 2.5
R2 C2		Ohm/pF	1200 2.5

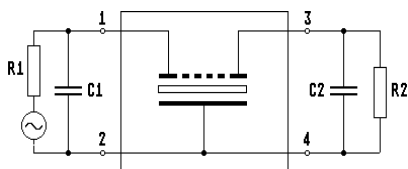
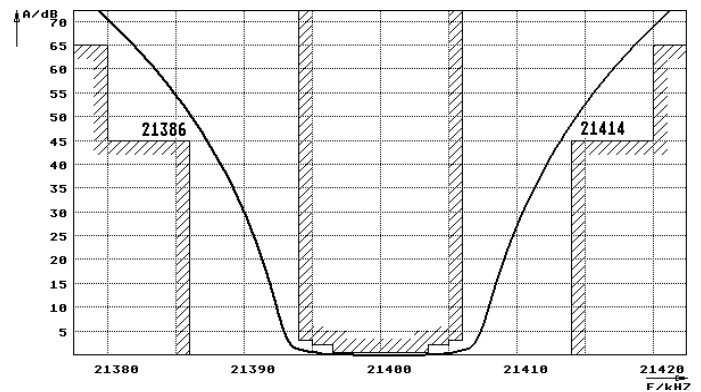
Operating temp. range ° C -20... +70

Characteristics MQF21.4-1200/15

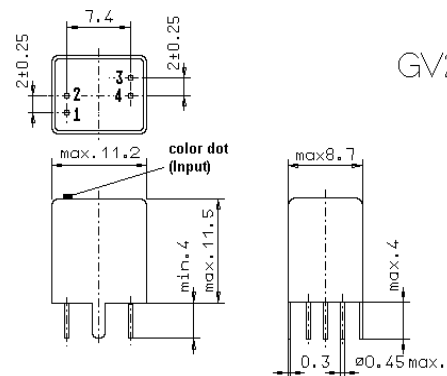
Pass band



Stop band



Pin connections: 1 Input
2 Input-E
3 Output
4 Output-E



GV2.1