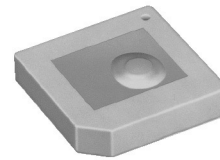


### Description

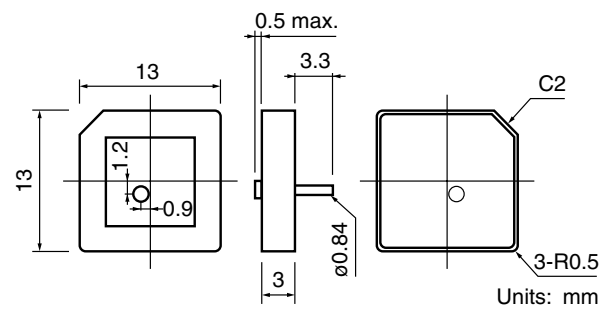
The TOKO DAT is a circularly polarized dielectric antenna element specifically designed for 5.8 GHz ISM applications including Dedicated Short-Range Communication (DSRC) systems such as Electronic Toll Collecting (ETC).



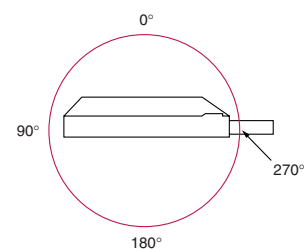
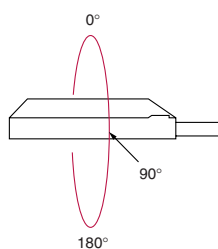
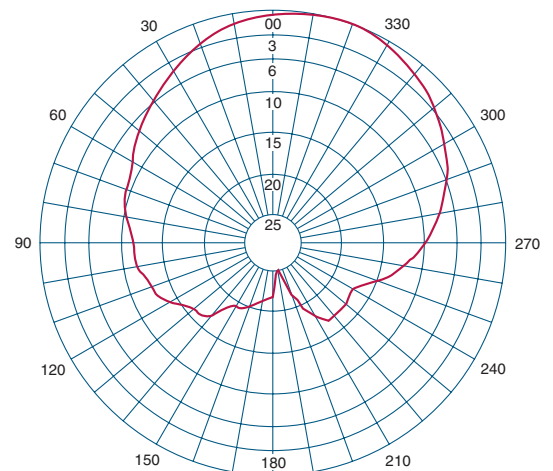
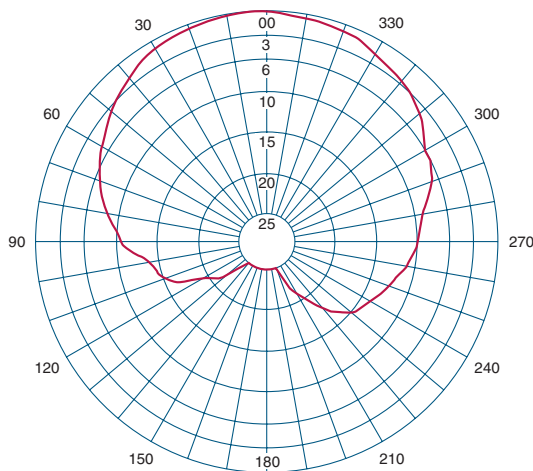
### Features

- Miniature footprint: 13mm x 13mm
- Low profile: 3.5mm max.
- Center Frequency: 5820 MHz
- Bandwidth:  $\pm 50$  MHz
- Peak Gain: 5.0 dBi (typ.)
- SWR: 2.0 max.
- Impedance: 50  $\Omega$
- Operating temperature:  $-20^{\circ}\text{C}$  to  $+85^{\circ}\text{C}$
- Storage temperature:  $-30^{\circ}\text{C}$  to  $+90^{\circ}\text{C}$

### Dimensions

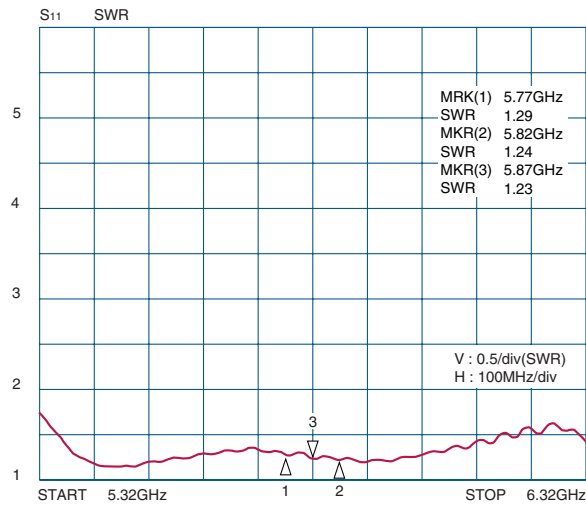


### Typical Characteristics

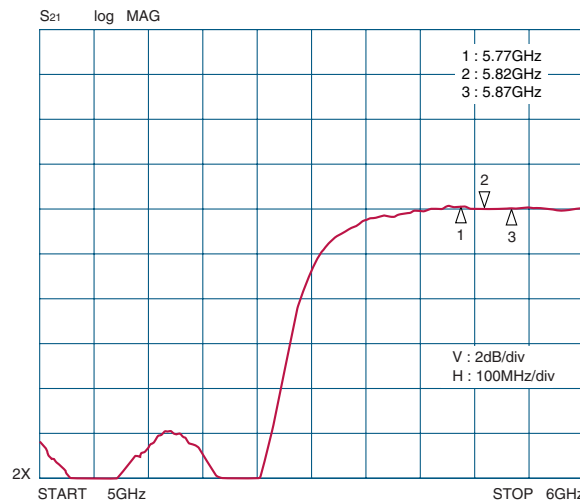


Typical Characteristics

SWR



Receiving Signal Response Over Frequency



The information furnished by TOKO, Inc. is believed to be accurate and reliable. However, TOKO reserves the right to make changes or improvements in the design, specification or manufacture of its products without further notice. TOKO does not assume any liability arising from the application or use of any product or circuit described herein, nor for any infringements of patents or other rights of third parties which may result from the use of its products. No license is granted by implication or otherwise under any patent or patent rights of TOKO, Inc.