

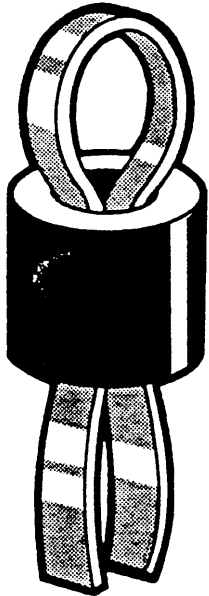
# TECHNICAL SPECIFICATIONS

Material  
 Bead: Boro Silicate Sintered Glass  
 Tag: Phosphor Bronze BS 384 Solder Tinned

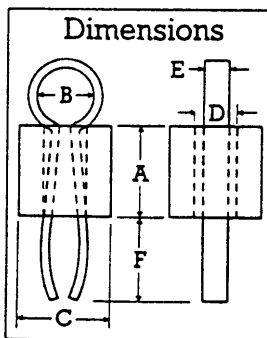
## GLASS BEAD

COEFF	DENSITY	VISCOSITY			LOG (OHM.CM)			DIELECTRIC	
		POISE °C						PROPERTIES	
TERM. EXPN × 10 <sup>-6</sup> /°C	g/cc	14.6	13	7.6	TR	DC. RESISTIVITY		AT 1 MHZ AT 20°C	
4.94	2.27	10	10	10	100	250°C	350°C	CONST	LOSS ANGLE
		475	515	719	365	10.1	8.2	5.7	0.003

NOTE: COEFFICIENT OF EXPANSION IS QUOTED FOR THE RANGE 50°-300°C



Dimensions	TYPE 100 (Large)		TYPE 200 (Small)		TYPE 300 (Long legged)	
	mm	inches	mm	inches	mm	inches
A	2.84-3.10	0.112-0.122	3.05-3.30	0.120-0.130	2.84-3.10	0.112-0.122
B	2.03-2.16	0.080-0.085	1.30-1.50	0.051-0.059	2.03-2.16	0.080-0.085
C	2.87-3.12	0.113-0.123	2.21-2.47	0.087-0.097	2.87-3.12	0.113-0.123
D	1.50-1.75	0.059-0.069	1.07-1.32	0.042-0.052	1.50-1.75	0.059-0.069
E	0.8	0.032	0.5	0.020	0.8	0.032
F	2.78	7/64	2.78	7/64	3.57	9/64
Board Size	1.59	1/16	1.59	1/16	2.38	3/32
Hole Size	1.32	0.052	1.0	0.40	1.32	0.052
Hole Centre	3.20	0.125	2.5	0.100	3.20	0.125
Order Code						
White	101		201		301	
Yellow	102		202		302	
Black	103		203		303	
Brown	104		204		304	
Blue	105		205		305	
Pink	106		206		306	



## HOW TO ORDER

When ordering, please refer to the order code above which will determine the type and colour required, i.e. 1.59mm (1/16") board with 1.32mm (0.052") hole in black, please quote code 103.

MoD approved

Your local agent is:

ESTABLISHED 1790

# WILLIAM HUGHES

LIMITED