

Product Features

- DC – 4 GHz
- +18.5 dBm P1dB at 1 GHz
- +35 dBm OIP3 at 1 GHz
- 16 dB Gain at 1 GHz
- 5.5 dB Noise Figure
- Available in Lead-free / green SOT-89 Package Style
- Internally matched to 50 Ω

Applications

- Mobile Infrastructure
- CATV / FTTH
- W-LAN / ISM
- RFID
- WiMAX / WiBro

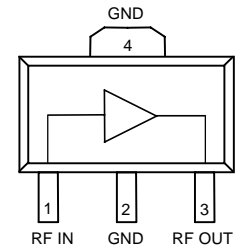
Product Description

The ECG040B is a general-purpose buffer amplifier that offers high dynamic range in a low-cost surface-mount package. At 1 GHz, the ECG040B typically provides 15.8 dB of gain, +35 dBm Output IP3, and +18.5 dBm P1dB.

The ECG040B consists of Darlington pair amplifiers using the high reliability InGaP/GaAs HBT process technology and only requires DC-blocking capacitors, a bias resistor, and an inductive RF choke for operation. The device is ideal for wireless applications and is available in a low-cost, surface-mountable lead-free/green/RoHS-compliant SOT-89 package. All devices are 100% RF and DC tested.

The broadband MMIC amplifier can be directly applied to various current and next generation wireless technologies such as GPRS, GSM, CDMA, and W-CDMA. In addition, the ECG040B will work for other various applications within the DC to 4 GHz frequency range such as CATV and mobile wireless.

Functional Diagram



| Function | Pin No. |
|-------------|---------|
| Input | 1 |
| Output/Bias | 3 |
| Ground | 2, 4 |

Specifications ⁽¹⁾

| Parameter | Units | Min | Typ | Max |
|---------------------------|-------|------|-------|------|
| Operational Bandwidth | MHz | DC | | 4000 |
| Test Frequency | MHz | | 1000 | |
| Gain | dB | | 15.8 | |
| Output P1dB | dBm | | +18.5 | |
| Output IP3 ⁽²⁾ | dBm | | +35 | |
| Test Frequency | MHz | | 2000 | |
| Gain | dB | 12.8 | 15.3 | 17.5 |
| Input Return Loss | dB | | 22 | |
| Output Return Loss | dB | | 16 | |
| Output P1dB | dBm | | +18 | |
| Output IP3 ⁽²⁾ | dBm | | +35 | |
| Noise Figure | dB | | 5.5 | |
| Device Voltage | V | | 4.8 | |
| Device Current | mA | | 70 | |

1. Test conditions unless otherwise noted: 25 °C, Supply Voltage = +6 V, Rbias = 16 Ω, 50 Ω System.

2. 3OIP measured with two tones at an output power of +5 dBm/tone separated by 1 MHz. The suppression on the largest IM3 product is used to calculate the 3OIP using a 2:1 rule.

Typical Performance ⁽¹⁾

| Parameter | Units | Typical | | | |
|---------------------------|-------|---------|-------|-------|-------|
| Frequency | MHz | 500 | 900 | 1900 | 2140 |
| S21 | dB | 16.0 | 15.8 | 15.3 | 15.1 |
| S11 | dB | -24 | -24 | -23 | -21 |
| S22 | dB | -27 | -23 | -16 | -16 |
| Output P1dB | dBm | +18.5 | +18.5 | +18 | +19 |
| Output IP3 ⁽²⁾ | dBm | +35.5 | +35 | +34.5 | +30.5 |
| Noise Figure | dB | 4.6 | 5.5 | 5.8 | 3.8 |

Absolute Maximum Rating

| Parameter | Rating |
|-----------------------------|----------------|
| Storage Temperature | -65 to +150 °C |
| RF Input Power (continuous) | +12 dBm |
| Device Current | 130 mA |
| Junction Temperature | +160 °C |
| Thermal Resistance, Rth | 128 °C/W |

Operation of this device above any of these parameters may cause permanent damage.

Ordering Information

| Part No. | Description |
|-------------|---|
| ECG040B-G | InGaP HBT Gain Block (lead-free/green/RoHS-compliant SOT-89 package) |
| ECG040B-PCB | 700–2400 MHz Fully Assembled Eval. Board |

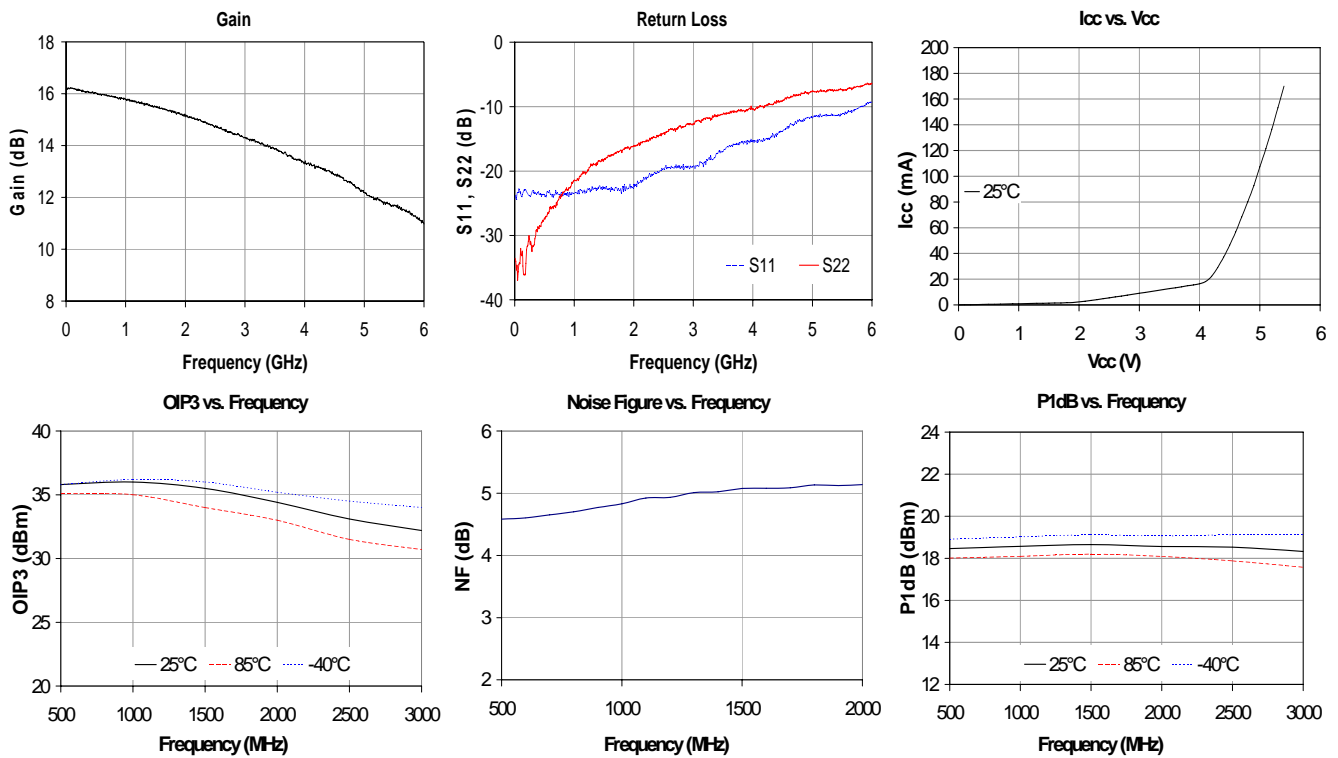
Specifications and information are subject to change without notice

Typical Device RF Performance

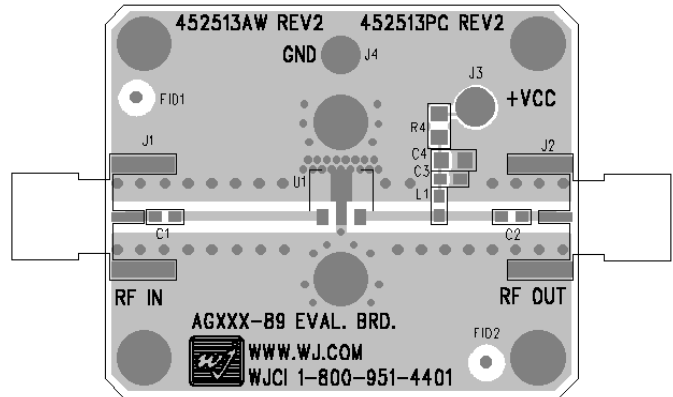
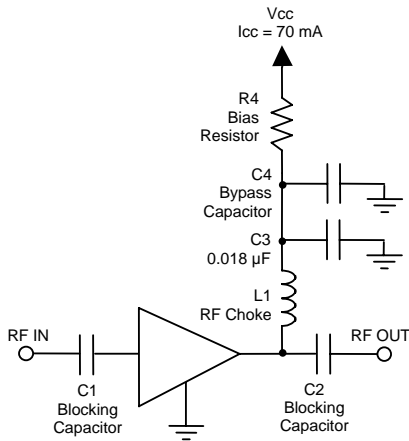
Supply Bias = +6 V, $R_{bias} = 16 \Omega$, $I_{cc} = 70 \text{ mA}$

| Frequency | MHz | 100 | 500 | 900 | 1900 | 2140 | 2400 | 3500 |
|--------------|-----|-------|-------|------|-------|-------|-------|-------|
| S21 | dB | 16.2 | 16.0 | 15.8 | 15.3 | 15.1 | 14.8 | 13.9 |
| S11 | dB | -23 | -24 | -24 | -23 | -21 | -20 | -17 |
| S22 | dB | -32 | -27 | -23 | -16 | -16 | -15 | -11 |
| Output P1dB | dBm | +18.4 | +18.5 | +18 | +18 | +18 | +18 | +17.5 |
| Output IP3 | dBm | +35.6 | +35.5 | +35 | +33.2 | +32.9 | +32.4 | |
| Noise Figure | dB | 4.6 | 4.7 | 4.9 | 5.1 | 5.3 | 5.4 | |

1. Test conditions: $T = 25^\circ\text{C}$, Supply Voltage = +6 V, Device Voltage = 4.8 V, $R_{bias} = 16 \Omega$, $I_{cc} = 70 \text{ mA}$ typical, 50Ω System.
2. 3OIP measured with two tones at an output power of +5 dBm/tone separated by 1 MHz. The suppression on the largest IM3 product is used to calculate the 3OIP using a 2:1 rule.
3. Data is shown as device performance only. Actual implementation for the desired frequency band will be determined by external components shown in the application circuit.



Recommended Application Circuit



Recommended Component Values

| Reference Designator | Frequency (MHz) | | | | | | |
|----------------------|-----------------|---------|--------|-------|-------|-------|-------|
| | 50 | 500 | 900 | 1900 | 2200 | 2500 | 3500 |
| L1 | 820 nH | 220 nH | 68 nH | 27 nH | 22 nH | 18 nH | 15 nH |
| C1, C2, C4 | .018 µF | 1000 pF | 100 pF | 68 pF | 68 pF | 56 pF | 39 pF |

- The proper values for the components are dependent upon the intended frequency of operation.
- The following values are contained on the evaluation board to achieve optimal broadband performance:

| Ref. Desig. | Value / Type | Size |
|-------------|--------------------------|------|
| L1 | 39 nH wirewound inductor | 0603 |
| C1, C2 | 56 pF chip capacitor | 0603 |
| C3 | 0.018 µF chip capacitor | 0603 |
| C4 | Do Not Place | |
| R4 | 16 Ω 1% tolerance | 0805 |

Recommended Bias Resistor Values

| Supply Voltage | R1 value | Size |
|----------------|-----------|------|
| 6 V | 17.1 ohms | 0805 |
| 7 V | 31.4 ohms | 1210 |
| 8 V | 46 ohms | 1210 |
| 9 V | 60 ohms | 2010 |
| 10 V | 74 ohms | 2010 |
| 12 V | 103 ohms | 2512 |

The proper value for R1 is dependent upon the supply voltage and allows for bias stability over temperature. WJ recommends a minimum supply bias of +6 V. A 1% tolerance resistor is recommended.

Typical Device S-Parameters

S-Parameters ($V_{\text{device}} = +4.8 \text{ V}$, $I_{\text{CC}} = 70 \text{ mA}$, $T = 25 \text{ }^\circ\text{C}$, calibrated to device leads)

| Freq (MHz) | S11 (dB) | S11 (ang) | S21 (dB) | S21 (ang) | S12 (dB) | S12 (ang) | S22 (dB) | S22 (ang) |
|------------|----------|-----------|----------|-----------|----------|-----------|----------|-----------|
| 50 | -23.31 | -179.51 | 16.19 | 177.81 | -19.40 | -0.03 | -36.95 | -170.80 |
| 500 | -23.69 | 170.90 | 16.04 | 158.74 | -19.30 | -5.83 | -27.31 | -130.75 |
| 1000 | -23.45 | 162.60 | 15.79 | 138.37 | -19.12 | -12.26 | -21.40 | -141.51 |
| 1500 | -22.70 | 156.61 | 15.50 | 118.53 | -19.03 | -19.16 | -18.24 | -153.77 |
| 2000 | -22.13 | 148.64 | 15.16 | 99.02 | -18.71 | -26.80 | -16.09 | -175.02 |
| 2500 | -19.60 | 139.22 | 14.76 | 79.46 | -18.36 | -32.98 | -14.17 | 167.68 |
| 3000 | -19.24 | 121.52 | 14.31 | 61.06 | -18.13 | -41.04 | -12.61 | 152.88 |
| 3500 | -16.99 | 115.00 | 13.86 | 41.97 | -17.78 | -51.05 | -11.16 | 130.54 |
| 4000 | -15.40 | 97.66 | 13.33 | 23.55 | -17.23 | -58.84 | -10.31 | 115.55 |
| 4500 | -13.81 | 84.99 | 12.88 | 4.82 | -16.82 | -68.93 | -9.04 | 97.41 |
| 5000 | -11.78 | 64.76 | 12.19 | -13.55 | -16.84 | -79.74 | -7.54 | 76.41 |
| 5500 | -11.08 | 52.37 | 11.70 | -30.90 | -16.58 | -89.82 | -7.37 | 64.41 |
| 6000 | -9.31 | 35.87 | 10.98 | -50.95 | -16.15 | -102.41 | -6.42 | 46.46 |

Device S-parameters are available for download off of the website at: <http://www.wj.com>

