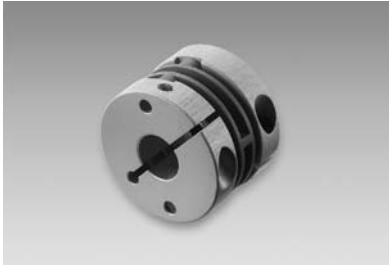


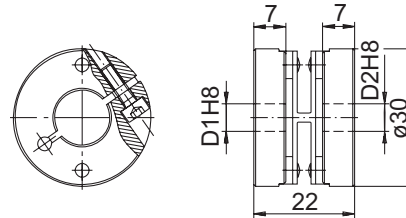
# Accessories & Service

## Mounting accessories

### Mounting accessories



### Dimensions



### Part number

Z 121.C01	Spring washer coupling D1=06 / D2=10
Z 121.C02	Spring washer coupling D1=06 / D2=06
Z 121.C03	Spring washer coupling D1=10 / D2=10
Z 121.C04	Spring washer coupling D1=10 / D2=16

### Technical data

Operating speed	≤12000 rpm
Torque	≤0.6 Ncm
Moment of inertia	29.5 gcm <sup>2</sup>
Torsion spring stiffness	50 Nm/rad
Radial offset	±0.3 mm
Angular shift	±2.5°
Axial offset	±0.4 mm
Operating temperature	-10...+100 °C
Assembly	Plug-in
Materials	Clamping ring: aluminium Spring washer: plastic
Weight approx.	26 g