

INFRARED REMOTE CONTROL RECEIVER

■ GENERAL DESCRIPTION

NJL65V/68H000 series are small and high performance receiving devices for infrared remote control system. NJL65V/68H000 series are mesh window type to improve EMI characteristic. Even under a lot of EMI noise condition, such as TV, VCR, Air-conditioner, etc., NJL65V/68H000 series can work normally.

■ FEATURES

1. Metal case type with mesh window.
2. Transmission distance : 15m typ.
3. Elliptic lens to improve the characteristic against light noise from the upper and lower side.
4. Line-up for various center carrier frequencies.

■ APPLICATIONS

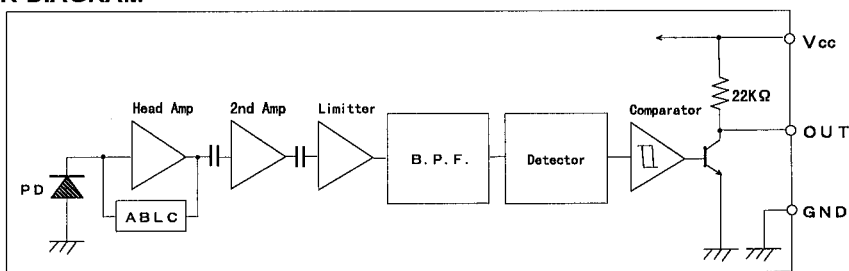
1. AV instruments such as Audio, TV, VCR, CD, MD, etc.
2. Home appliances such as Air-conditioner, Fan, etc.
3. The other equipment with wireless remote control.

■ LINE-UP

ViewType	Side	Top
Carrier Frequency \ Height	15.6 mm	15 mm
fo=36 KHz	NJL65V360	NJL68H360
36.7 KHz	NJL65V367	NJL68H367
38 KHz	NJL65V380	NJL68H380
40 KHz	NJL65V400	NJL68H400
56.8 KHz	NJL65V568	NJL68H568

※ Regarding the other frequencies or packages, please contact to New JRC individually.

■ BLOCK DIAGRAM



■ ABSOLUTE MAXIMUM RATINGS (Ta = 25 °C)

Supply Voltage	V _{cc}	6.3V
Operating Temperature Range	T _{opr}	-30 °C — +85 °C
Storage Temperature Range	T _{stg}	-40 °C — +85 °C
Soldering Temperature	T _{sol}	260 °C 5sec 4.0mm from mold body

RECOMMENDED OPERATING CONDITION

Supply Voltage Range V_{CC} 4.5V - 5.5V

ELECTRO-OPTICAL CHARACTERISTICS ($V_{CC} = 5.0V$, $T_a = 25^\circ C$)

PARAMETER	SYMBOL	TEST CONDITION	MIN	TYP	MAX	UNIT
Supply Current	I_{CC}	No Signal Input	—	—	3	mA
Transmission Distance	L_c	Direction of Ray Axis *1	10	15	—	m
Directivity	θ_L	Angle of half L_c , Horizontal *2	—	50	—	deg
	θ_V	Angle of half L_c , Vertical *2	—	35	—	deg
Output Voltage Low	V_L	No Load	—	0.2	0.5	V
Output Voltage High	V_H	No Load	4.5	—	—	V
Low Level Pulse Width	T_{WL}	See Test Circuit	400	—	800	μs
High Level Pulse Width	T_{WH}	See Test Circuit	400	—	800	μs
Carrier Frequency	f_o	See Line-up	36.0	—	56.8	KHz

Note *1: Test with each center carrier frequency under the test condition shown below.

*2: Place major axis of elliptic lens in horizontal direction and minor in vertical.

TEST METHOD

Test condition is as follows:

(1) Standard Transmitter:

Transmitting wave form is shown in Fig.1. Transmitting power should be adjusted so that output voltage V_{out} will be 400 mVp-p.

Regarding IR LED used for transmitter,
 $\lambda_p = 940nm$, $\Delta \lambda = 50nm$.

Regarding photo diode, Sensitivity
 $S = 26nA/Lx$, in case light source
 temperature $2856^\circ K$, $E_e = 100Lx$, $VR = 5V$

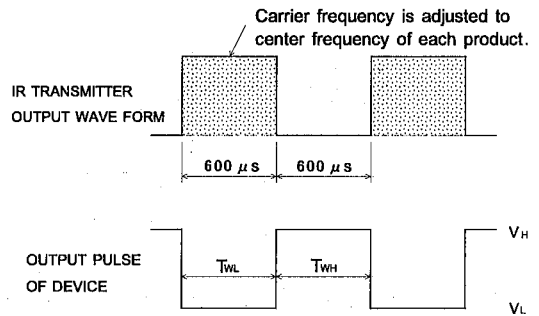


Fig. 1 TRANSMITTER WAVE FORM

(2) Test system: Shown in Fig.3.

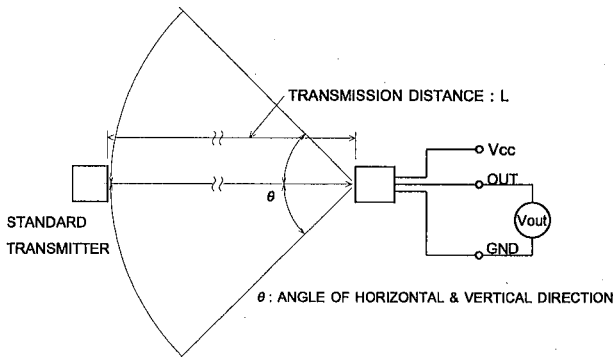


Fig. 3 TEST SYSTEM

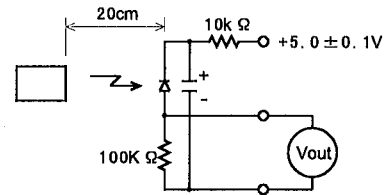
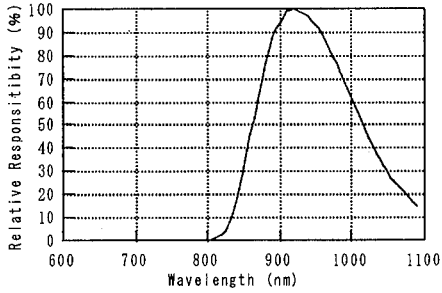


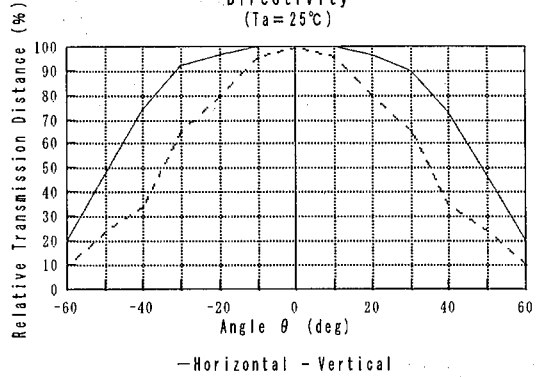
Fig. 2 STD. TRANSMITTER TEST CIRCUIT

■ TYPICAL CHARACTERISTICS

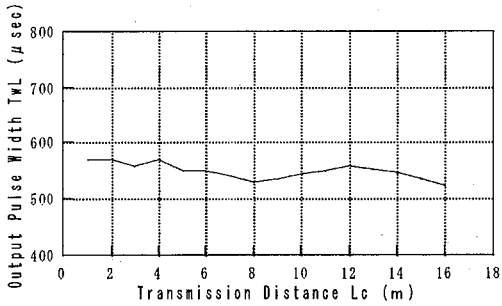
Spectral Response
($T_a = 25^\circ\text{C}$)



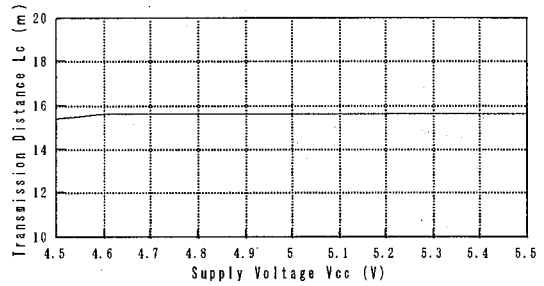
Directivity
($T_a = 25^\circ\text{C}$)



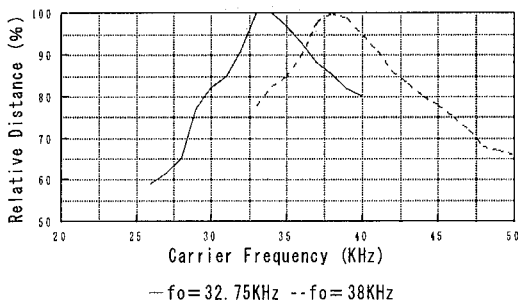
Output Pulse Width vs. Distance
(Input Pulse Width = $600\ \mu\text{s}$, $V_{cc} = 5.0\text{V}$, $T_a = 25^\circ\text{C}$)



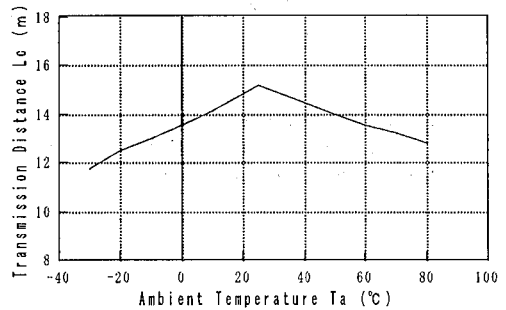
Transmission Distance vs. Supply Voltage
($T_a = 25^\circ\text{C}$)



Transmission Distance vs. Carrier Frequency
($V_{cc} = 5.0\text{V}$, $T_a = 25^\circ\text{C}$)

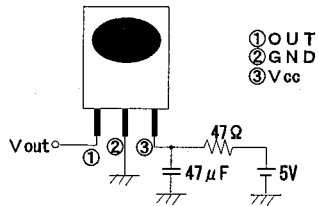


Transmission Distance vs. Temperature
($V_{cc} = 5.0\text{V}$)



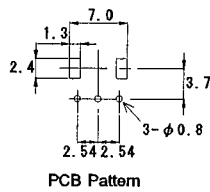
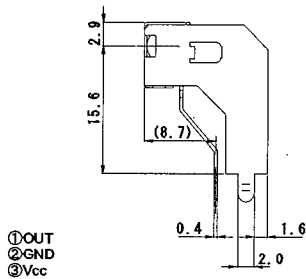
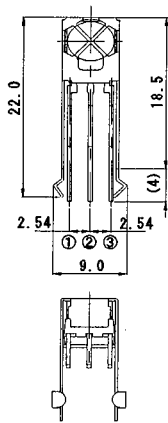
3

RECOMMENDED APPLICATION CIRCUIT

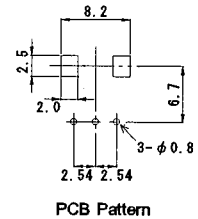
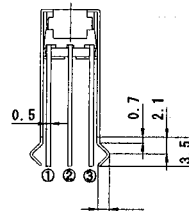
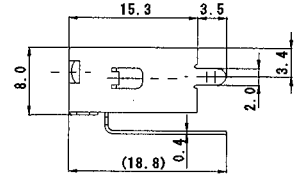
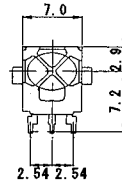


RC Filter should be connected closely between Vcc pin and GND pin.

OUTLINE



NJL65V000
UNIT : mm



NJL68H000
UNIT : mm

1. Tolerance is ± 0.3 unless otherwise noted.
2. Ground metal case on PCB. Metal case is not connected to GND pin inside.

MEMO

[CAUTION]

The specifications on this databook are only given for information, without any guarantee as regards either mistakes or omissions. The application circuits in this databook are described only to show representative usages of the product and not intended for the guarantee or permission of any right including the industrial rights.