



EMC Filters

3-Line Filters
B84143-A*-R105

Data Sheet



<http://www.epcos.com>

Power line filters for three-phase systems

Rated voltage 480/275 V~, 50/60 Hz

Rated current 8 bis 50 A

Construction

- Three-line filter
- Metal case
- Book size



Features

- Low leakage current
- Easy to install
- Compact design
- Construction complies with EN 133200, UL 1283, CSA 22.2 No. 8 1986
- Optimized for long motor cables and operation under full loads
- UL and CSA approval pending

Applications

- Frequency converters for motor drives, e.g.
 - elevators
 - pumps
 - traction systems
 - HVAC systems (heating, ventilation and air conditioning)
- Power supplies

Terminals

Safe-to-touch terminal blocks

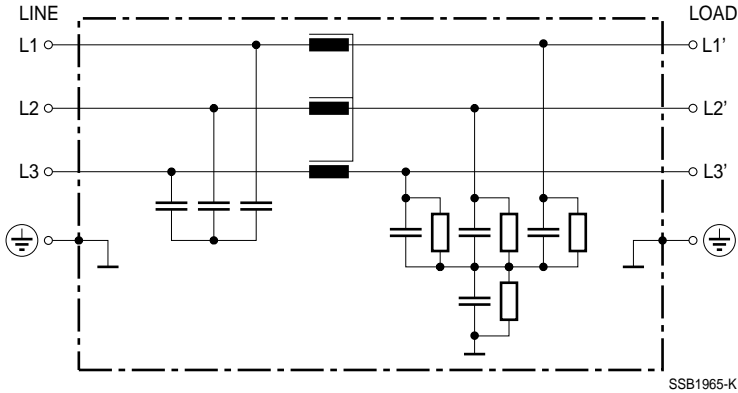
Marking

Marking on component:

Manufacturer's logo, ordering code,
rated voltage, rated current,
rated temperature, climatic category, date code

Minimum marking on packaging:

Manufacturer's logo, ordering code

Typical circuit diagrams

Technical data

Rated voltage V_R	480/275 V~, 50/60 Hz
Rated current I_R	Referred to 40 °C ambient temperature
Test voltage V_T	2121 V~, 2 s (line/line) 2700 V~, 2 s (line/case)
Overload capability	1,5 · I_R for 3 min per hour or 2,5 · I_R for 30 s per hour
Leakage current I_{leak}	at 480 V~, 50 Hz
Climatic category	25/085/21 (– 25 °C/+85 °C/21 days damp heat test) in accordance with EN 60068-1

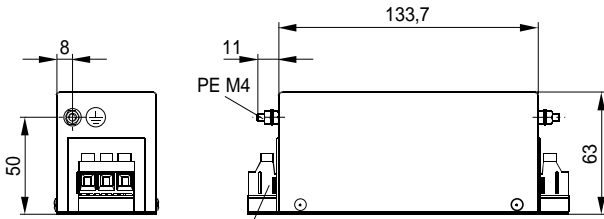
Characteristics and ordering codes

I_R A	Terminal cross section mm ²	I_{leak} typ ¹⁾ mA	R_{typ} mΩ	Approx. weight kg	Ordering code
8	4	12	16	0,58	B84143-A8-R105
16	4	14	9	0,90	B84143-A16-R105
25	4	14	5	1,10	B84143-A25-R105
36	10	14	4	1,75	B84143-A36-R105
50	10	14	2	1,75	B84143-A50-R105

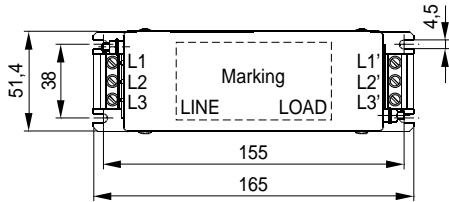
¹⁾ At rated operation

Dimensional drawings

B84143-A8-R105

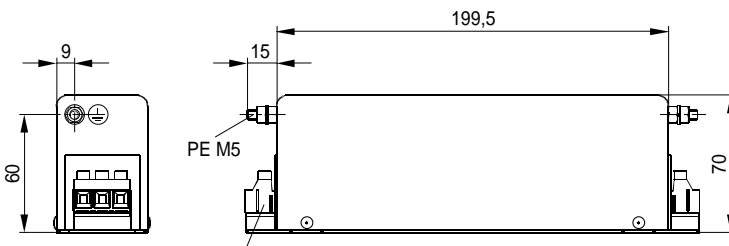


Terminal blocks 4 mm²

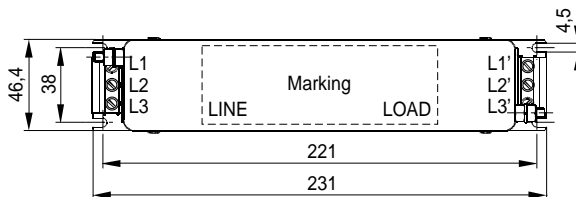


SSB1988-P

B84143-A16-R105

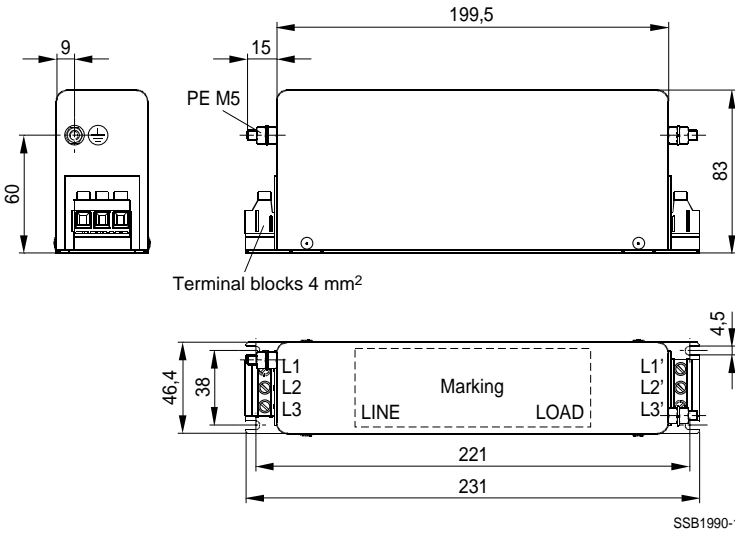


Terminal blocks 4 mm²

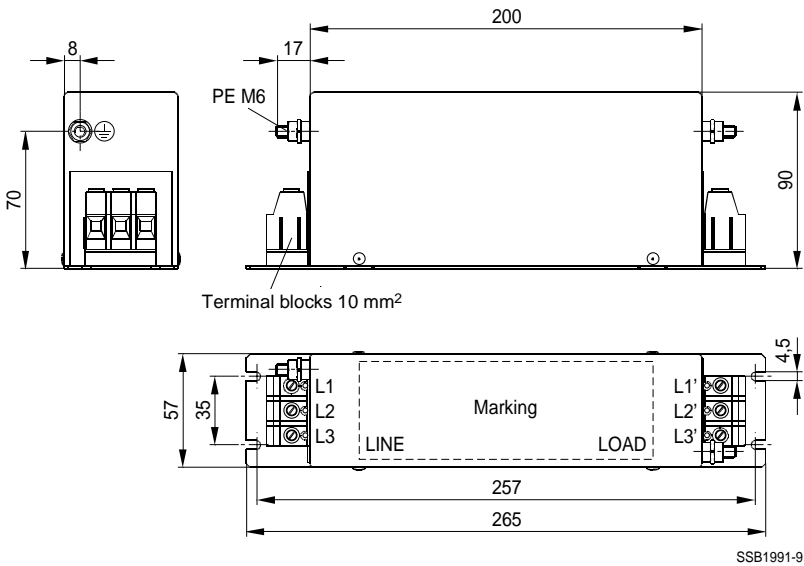


SSB1989-X

B84143-A25-R105



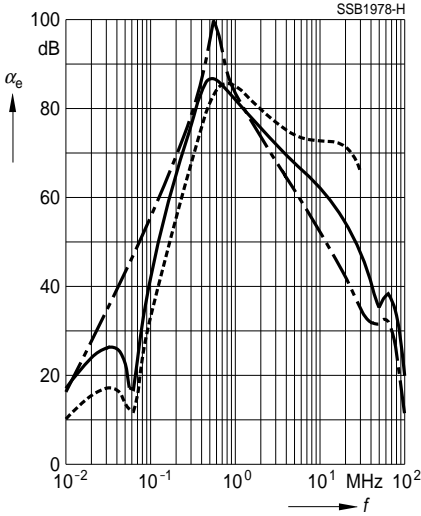
B84143-A36-R105, B84143-A50-R105



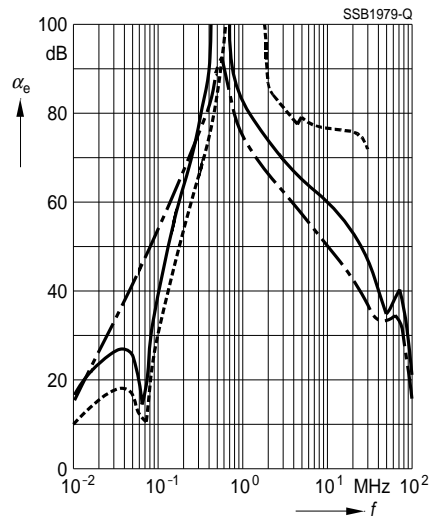
Insertion loss (typical values at $Z = 50 \Omega$)

- unsymmetrical, adjacent branches terminated
- - - - - common mode, all branches in parallel (asymmetrical)
- - - - - differential mode (symmetrical)

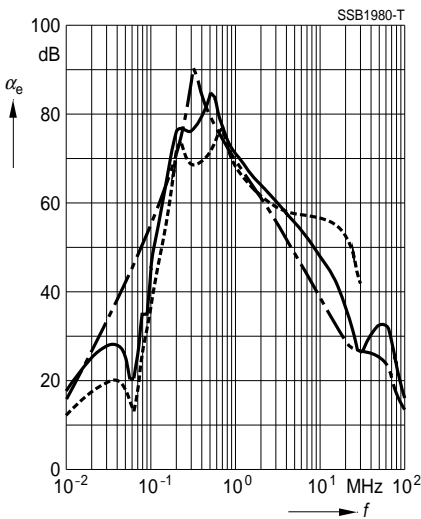
B84143-A8-R105



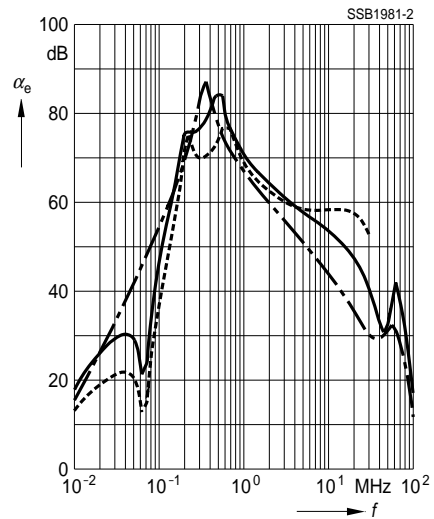
B84143-A16-R105



B84143-A25-R105



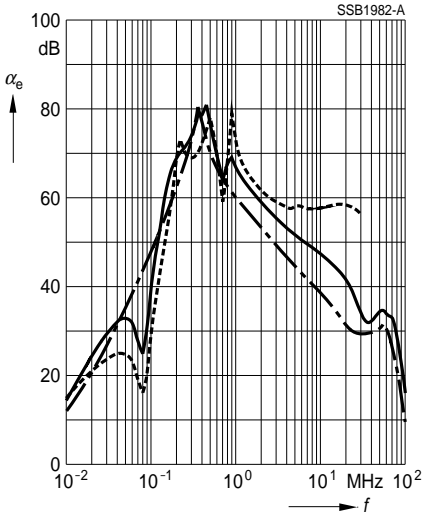
B84143-A36-R105



Insertion loss (typical values at $Z = 50 \Omega$)

- unsymmetrical, adjacent branches terminated
- · - · - · - common mode, all branches in parallel (asymmetrical)
- - - - - differential mode (symmetrical)

B84143-A50-R105



Published by EPCOS AG

Marketing Communications, P.O. Box 80 17 09, 81617 Munich, GERMANY

© EPCOS AG 2001. All Rights Reserved. Reproduction, publication and dissemination of this brochure and the information contained therein without EPCOS' prior express consent is prohibited.

The information contained in this brochure describes the type of component and shall not be considered as guaranteed characteristics. Purchase orders are subject to the General Conditions for the Supply of Products and Services of the Electrical and Electronics Industry recommended by the ZVEI (German Electrical and Electronic Manufacturers' Association), unless otherwise agreed.

This brochure replaces the previous edition.

For questions on technology, prices and delivery please contact the Sales Offices of EPCOS AG or the international Representatives.

Due to technical requirements components may contain dangerous substances. For information on the type in question please also contact one of our Sales Offices.