

DC/DC Converter**1.8 Watts**

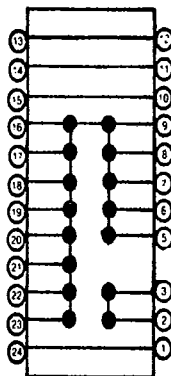
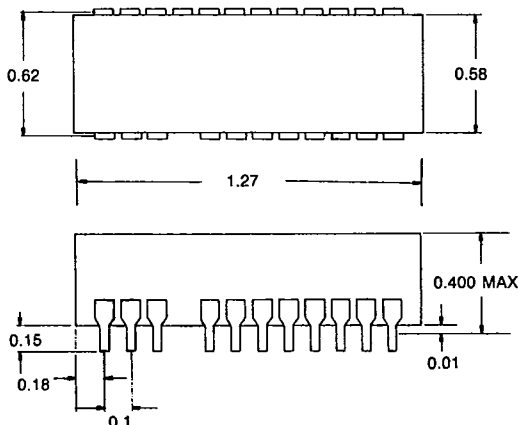
DEVICE TYPE	INPUT VOLTAGE RANGE (VDC)	INPUT CURRENT mA (MAX)	OUTPUT VOLTAGE VDC	OUTPUT CURRENT mA (MAX)	PACKAGE
DC-101 (R)	5	548 (642)	9	250	A
DC-102 (R)	5	440 (514)	5	360	A
DC-103 (R)	5	440 (514)	12	150	A
DC-104 (R)	5	440 (514)	15	120	A
DC-105 (R)	5	440 (514)	± 5	± 180	A
DC-106 (R)	5	440 (514)	± 12	± 75	A
DC-107 (R)	5	440 (514)	± 15	± 60	A
DC-108 (R)	12	182 (214)	5	360	A
DC-109 (R)	12	182 (214)	9	200	A
DC-110 (R)	12	182 (214)	12	150	A
DC-111 (R)	12	182 (214)	± 12	± 75	A
DC-112 (R)	12	182 (214)	± 15	± 60	A
DC-113 (R)	24	91 (107)	5	360	A
DC-114 (R)	24	91 (107)	12	150	A
DC-115 (R)	24	91 (107)	15	120	A
DC-116 (R)	24	91 (107)	± 12	± 75	A
DC-117 (R)	24	91 (107)	± 15	± 60	A
DC-118 (R)	48	45 (53)	5	360	A
DC-119 (R)	48	45 (53)	12	150	A
DC-120 (R)	48	45 (53)	15	120	A
DC-121 (R)	48	45 (53)	± 12	± 75	A
DC-122 (R)	48	45 (53)	± 15	± 60	A

PS: (R) means "Regulated"

DC/DC Converter

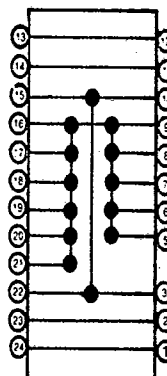
MECHANICAL DIMENSIONS AND PIN CONNECTION

PACKAGE A:



TOP VIEW OF SINGLE OUT

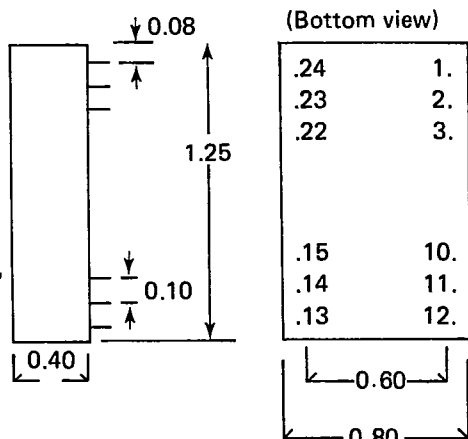
- PIN
- 1 +VIN
 - 12 -VIN
 - 11 +VOUT
 - 10 -VOUT



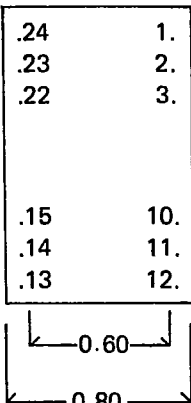
TOP VIEW OF DUAL OUT

- PIN
- 1 +VIN
 - 2 -VOUT
 - 3&10 VOUT COMMON
 - 11 +VOUT
 - 12 -VIN

PACKAGE B:

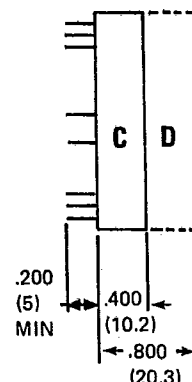
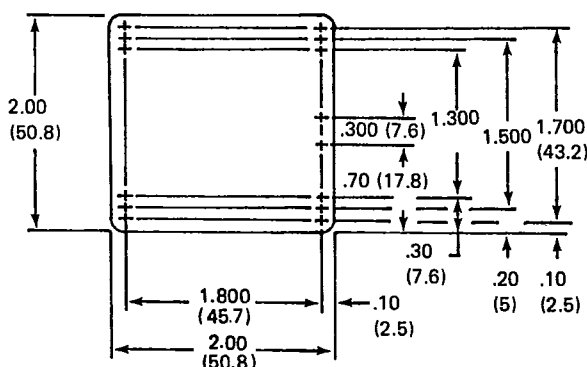


(Bottom view)

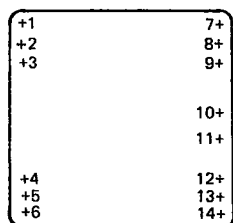


PIN	SINGLE OUTPUT	DUAL OUTPUT
1.	+ INPUT	+ INPUT
2.	NC	- OUTPUT
3.	NC	COMMON
10.	- OUTPUT	COMMON
11.	+ OUTPUT	+ OUTPUT
12.	- INPUT	- INPUT
13.	- INPUT	- INPUT
14.	+ OUTPUT	+ OUTPUT
15.	- OUTPUT	COMMON
22.	NC	COMMON
23.	NC	- OUTPUT
24.	+ INPUT	+ INPUT

PACKAGE C & D:



All Dimensions ± .020



PIN	SINGLE OUTPUT	DUAL OUTPUT
1-3	+ INPUT	+ INPUT
4-6	- INPUT	- INPUT
7-9	+ OUTPUT	+ OUTPUT
10-11	COMMON	COMMON
12-14	COMMON	- OUTPUT