

Materials and Finish

Housing: PBT Thermoplastic
15% Glass Filled, Black Color,
UL 94V-0 Rated

Terminals:

Pin # 2R, 5T: Phosphor Bronze,
Tin Plated

Pin # 1S: Brass, Nickel Plated

Electrical Characteristics

Contact Resistance:
Before Test: 50 milliohms Max.
After Durability Test:
100 milliohms Max.

Insulation Resistance:
More than 100 Megohms
at 500V DC

Dielectric Withstanding Voltage:
500V AC RMS for 1 minute

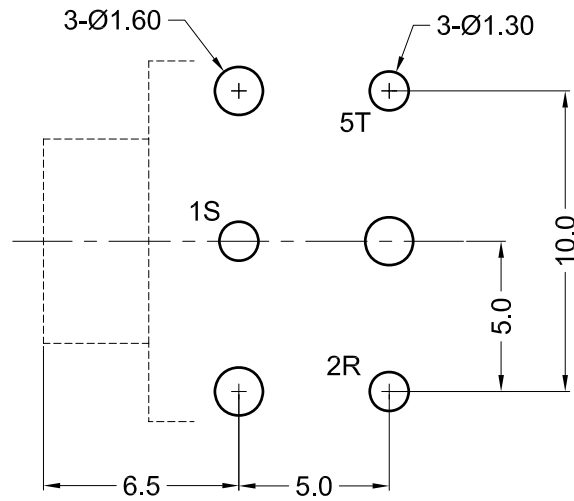
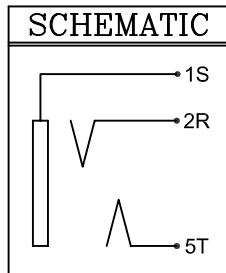
Operating Temp:
-25°C to +100°C

Mechanical Characteristics

Insertion Force:
0.4kg - 3.0kg

Extraction Force:
0.3kg - 3.0kg

Durability: 5000 mating cycles



Recommended PCB Layout
(Bottom View)



Tolerances

X.X ± 0.3
X.XX ± 0.15
Unless Stated
Otherwise

REV.	DATE	DESCRIPTION	REV. BY	CHK. BY	DRAWN BY	DATE
A0	9/28/05	New Drawing	R. Aguirre	H. MA	R. Aguirre	07/14/05
A1	6/7/06	Release Drawing	H. MA	N/A		
A2	06/02/08	Add Nut Info.	S. Vien	H. MA	UNITS	mm
B2	10/18/10	ECO #10-068	P. DalCanto	H. MA		

STX-3200-3CB

High Profile Stereo Jack, 3 pos., RoHS Compliant

Metal Bushing, Threaded Barrel, Backplate

