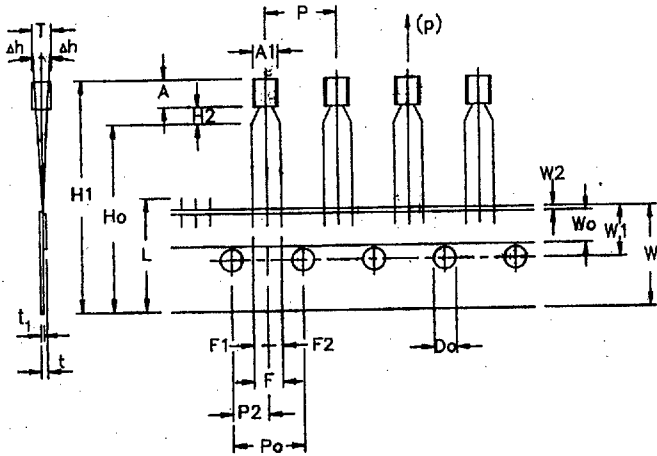
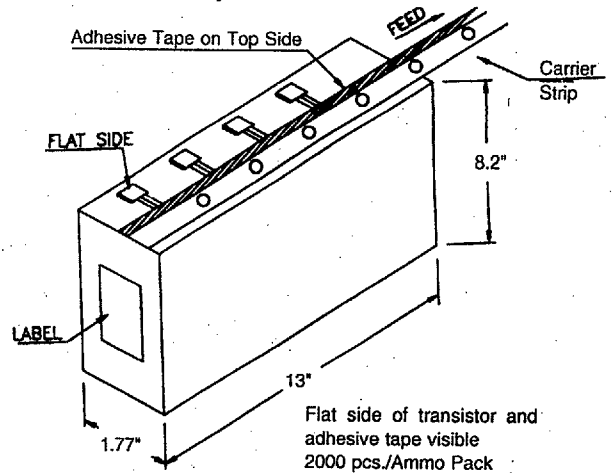


Maximum Ratings							Electrical Characteristics (Ta=25°C, Unless Otherwise Specified)																		
Type No.	V _{CBO} (V)	V _{CEO} (V)	V _{EB0} (V)	P _D (W)	I _C (A)	I _{CBO} (μA)	V _{CB} (V)	I _{CES} (μA)	V _{CE} (V)	h _{FE}	@	I _C & V _{CE} (mA)	V _{CE(SAT)} (V)	V _{BE(SAT)} (V)	I _C (mA)	C _{ob} (pF)	f _t (MHz)	@	I _C (mA)	t _{on} (ns)	N _F (dB)	@ Freq (MHz)	C _{in} (pF)	CDIL Case Style	
	Min	Min	Min	@ Tc=25°C	Max	Max	Max	Max	Min	Max	Min	Max	Max	Min	Max	Typ	Max	Min	Typ	Max	Max	Max	Max	Max	
CSA988E	120	120	5	0.5	0.05	0.05	120			150		0.1 6	0.3	1.0	10	3	50								TO-92-1
										400	800	1 6													TO-92-1
CSA988F	120	120	5	0.5	0.05	0.05	120			150		0.1 6	0.3	1.0	10	3	50								TO-92-1
										300	600	1 6													TO-92-1
CSA988P	120	120	5	0.5	0.05	0.05	120			150		0.1 6	0.3	1.0	10	3	50								TO-92-1
										200	400	1 6													TO-92-1
CSA1015	50	50	5	0.4	0.15	0.1	50			70	400	2 6	0.3	1.1	100	7	80					10	0.001		TO-92-1
										25	150	6													TO-92-1
CSA1015GR	50	50	5	0.4	0.15	0.1	50			200	400	2 6	0.3	1.1	100	7	80					10	0.001		TO-92-1
										25	150	6													TO-92-1
CSA1015O	50	50	5	0.4	0.15	0.1	50			70	140	2 6	0.3	1.1	100	7	80					10	0.001		TO-92-1
										25	150	6													TO-92-1
CSA1015Y	50	50	5	0.4	0.15	0.1	50			120	240	2 6	0.3	1.1	100	7	80					10	0.001		TO-92-1
										25	150	6													TO-92-1
CSA1029	30	30	5	0.625	0.1	0.5	18			100	500	2 12	0.2		10	4	200								TO-92-1
CSA1048	50	50	5	0.2	0.15	0.1	50			70	400	2 6	0.25		100	7	80					10			TO-92-1
CSA1048GR	50	50	5	0.2	0.15	0.1	50			200	400	2 6	0.25		100	7	80					10			TO-92-1
CSA1048O	50	50	5	0.2	0.15	0.1	50			70	140	2 6	0.25		100	7	80					10			TO-92-1
CSA1048Y	50	50	5	0.2	0.15	0.1	50			120	240	2 6	0.25		100	7	80					10			TO-92-1
CSA1266	50	50	5	0.625	0.15	0.1	50			70	400	2 6	0.3	1.1	100	4	7	80				10			TO-92-1
										25	150	6													TO-92-1
CSA1266GR	50	50	5	0.625	0.15	0.1	50			200	400	2 6	0.3	1.1	100	4	7	80				10			TO-92-1
										25	150	6													TO-92-1
CSA1266O	50	50	5	0.625	0.15	0.1	50			70	140	2 6	0.3	1.1	100	4	7	80				10			TO-92-1
										25	150	6													TO-92-1
CSA1266Y	50	50	5	0.625	0.15	0.1	50			120	240	2 6	0.3	1.1	100	4	7	80				10			TO-92-1
										25	150	6													TO-92-1
CSA1267	50	50	5	0.4	0.15	0.1	50			70	400	2 6	0.3		100	4	7	80				10			TO-92-1
CSA1267GR	50	50	5	0.4	0.15	0.1	50			200	400	2 6	0.3		100	4	7	80				10			TO-92-1
CSA1267O	50	50	5	0.4	0.15	0.1	50			70	140	2 6	0.3		100	4	7	80				10			TO-92-1
CSA1267Y	50	50	5	0.4	0.15	0.1	50			120	240	2 6	0.3		100	4	7	80				10			TO-92-1
CSB564A	30	25	5	0.8	1	0.1	30			70	400	100 1	0.5	1.2	1000	18	110					10			TO-92-1
CSB564AG	30	25	5	0.8	1	0.1	30			200	400	100 1	0.5	1.2	1000	18	110					10			TO-92-1
CSB564AO	30	25	5	0.8	1	0.1	30			70	140	100 1	0.5	1.2	1000	18	110					10			TO-92-1
CSB564AY	30	25	5	0.8	1	0.1	30			120	240	100 1	0.5	1.2	1000	18	110					10			TO-92-1
CSB737	50	40	5	0.25	0.3	0.5	30			120	560	10 6	0.5		50		100					10			TO-92-1
CSB737Q	50	40	5	0.25	0.3	0.5	30			120	270	10 6	0.5		50		100					10			TO-92-1
CSB737R	50	40	5	0.25	0.3	0.5	30			180	390	10 6	0.5		50		100					10			TO-92-1
CSB737S	50	40	5	0.25	0.3	0.5	30			270	560	10 6	0.5		50		100					10			TO-92-1
CSB1426	20	20	5	0.75	3	0.1	20			82	390	100 2	0.5		2000	35	240					500			TO-92-1

MECHANICAL DATA



Ammo Pack Style



Item	Symbol	Specification				Remarks
		Min.	Nom.	Max.	Tol.	
Body Width	A1	4.0		4.8		
Body Height	A	4.8		5.2		
Body Thickness	T	3.9		4.2		
Pitch of Component	P		12.7		±1	
Feed Hole Pitch	Po		12.7		±0.3	Cumulative Pitch Error 1.0 mm/20 Pitch
Feed Hole Centre to Component Centre	P2		6.35		±0.4	To be measured at bottom of Clinch
Distance between Outer Leads	F		5.08		±0.6	
Component Alignment	Δh		0	1	-0.2	At Top of Body
Tape Width	W		18		±0.5	
Hold-Down Tape Width	W0		6		±0.2	
Hole Position	W1		9		±0.7	
Hold-Down Tape Position	W2		0.5		±0.2	
Lead Wire Clinch Height	Ho		16		±0.5	
Component Height	H1			32.25		
Length of Snipped leads	L			11.0		
Feed Hole Diameter	Do		4		±0.2	
Total Tape Thickness	t			1.2		t ₁ 0.3-0.6
Lead-to-Lead Distance	F1,F2		2.54		+0.4 -0.1	
Clinch Height	H2			3		
Pull-out Force	(p)	6N				

Dimensions in m.m.

- Notes:**
1. Maximum alignment deviation between leads not to be greater than 0.2 mm.
 2. Maximum non-cumulative variation between tape feed holes shall not exceed 1 mm in 20 pitches
 3. Hold-down tape not to exceed beyond the edge(s) of carrier tape and there shall be no exposure of adhesive.
 4. No more than 3 consecutive missing components permitted.
 5. A tape trailer, having at least three feed holes is required after the last component.
 6. Splices shall not interfere with the sprocket feed holes.