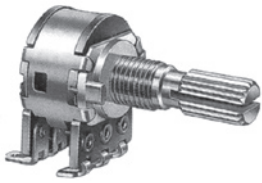


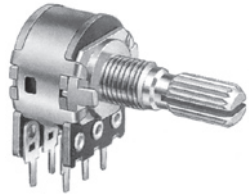
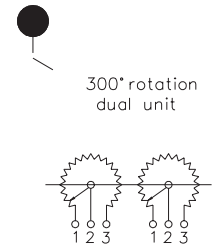
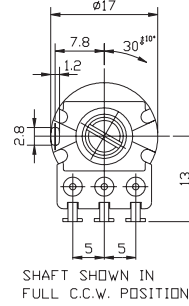
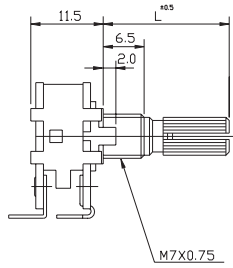
Potentiometers

16mm Size Metal Shaft DP Rotary Potentiometers

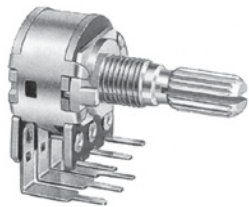
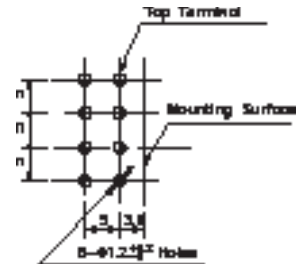
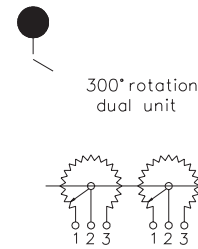
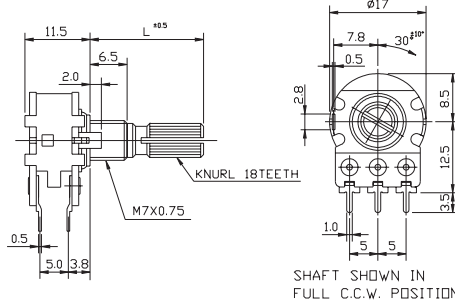
GPV16B Series



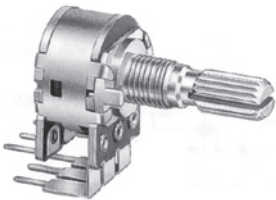
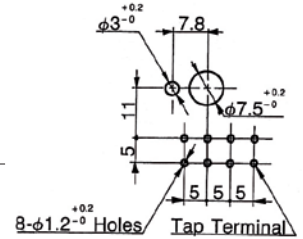
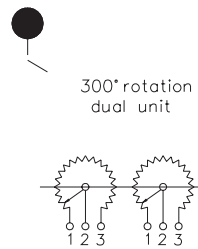
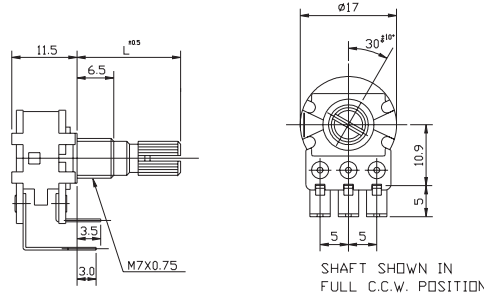
PV16B10B6
Solder Lug



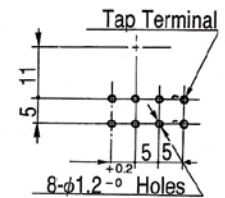
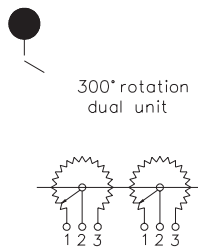
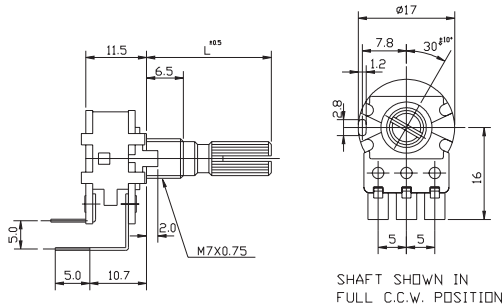
PV16B20
PC Board Horizontal



PV16B30
PC Board Vertical Front



PV16B41
PC Board Vertical Back



How to order:

GPV16B ...

- | | |
|---|--|
| 1 TYPE OF TERMINALS: | 7 RESISTANCE VALUE (OHM) |
| 10 Solder Lug | 5K 10K 20K 50K 100K |
| 20 PC Board Horizontal | 200K 500K 1M |
| 30 PC Board Vertical Front | 8 NUMBER OF CLICK |
| 40 PC Board Vertical Back | N None Click |
| 2 TYPE OF BUSHING: | C Center Click |
| N Standard | 11 11 Positions Click |
| 3 LENGTH OF SHAFT (mm): | 21 21 Positions Click |
| 15 20 25 30 | 41 41 Positions Click |
| 4 TYPE OF SHAFT (see support page): | SPECIAL REQUESTS: |
| K K-Type | PATTERN OF RESISTANCE CURVE |
| S S-Type | ... (Texts) |
| R R-Type | MATERIALS & METHODS FOR MANUFACTURING SHAFT & BUSHING |
| F F-Type | ... (Texts) |
| 5 AXIS ANGLE OF F-SHAFT: | |
| --- | |
| 6 RESISTANCE TAPER (see support page): | |
| ... | |

General Specifications:

MECHANICAL:

- » Total Rotation Angle: 300°±5°
- » Rotation Torque: 20-200 gf.cm
- » Shaft Stop Strength: 6Kgf.cm/Max.
- » Click Torque: 100-400 gf.cm
- » Pull-Push Strength: 100N Max.

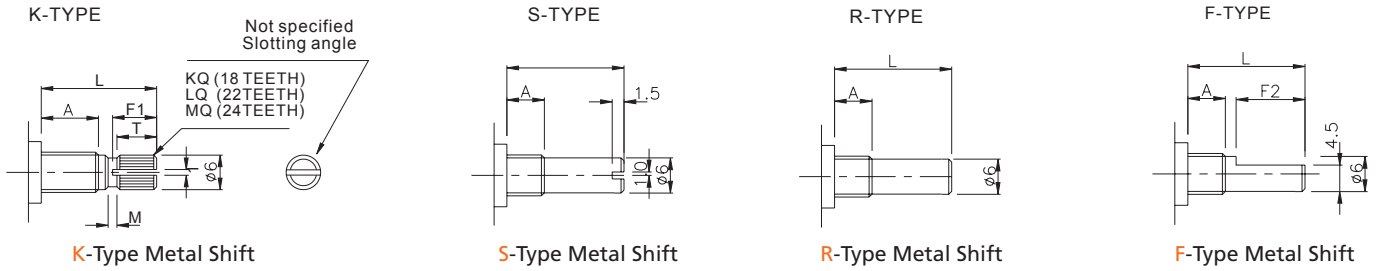
ELECTRICAL:

- » Rated Wattage: 0.125W for linear taper B
0.06W for other tapers
- » Rated Voltage: 200V for linear taper B
150V for other tapers
- » Insulation Resistance: More than 100MΩ at DC500V

Potentiometers

Additional Informations for GPV16A & GPV16B Series

METAL SHIFT



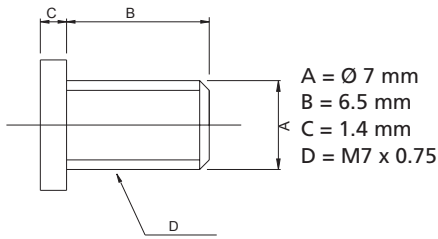
A: 5 mm

Shaft Type	L	15	20	25	30
K	F1	6.5	11	14	14
	T	6	10	12	12
	M	1	2	4	4
F	F2	7	12	14	14
R, S	L	15	20	25	30

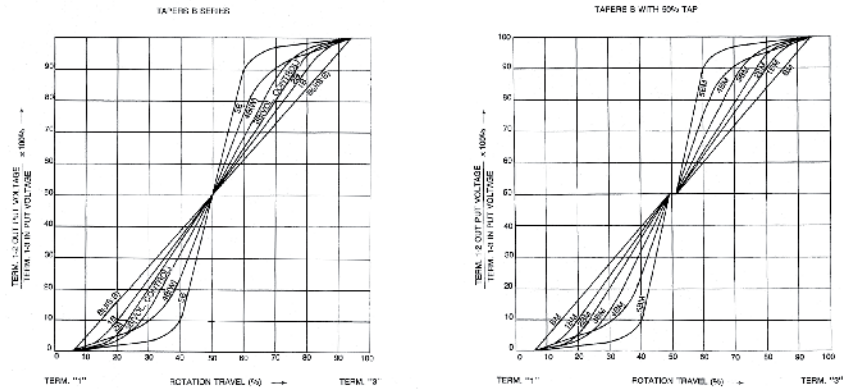
A: 6.5 mm

Shaft Type	L	15	20	25	30
K	F1	6.5	11	14	14
	T	6	10	12	12
	M	1	2	4	4
F	F2	7	12	14	14
R, S	L	15	20	25	30

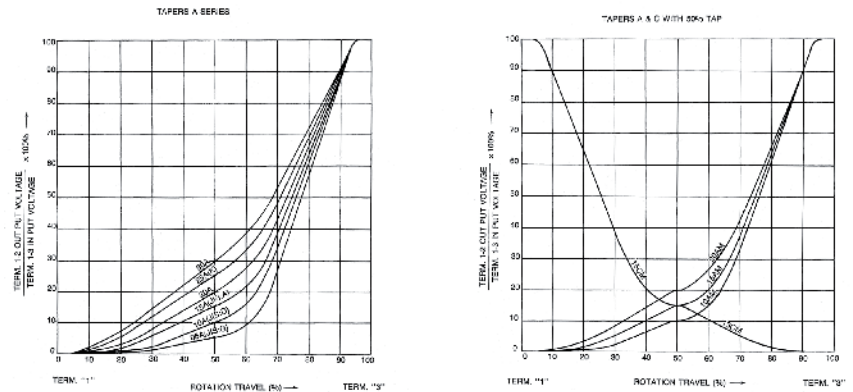
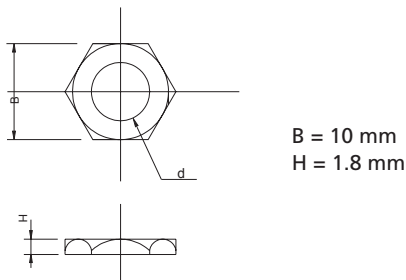
NUT (M7x0.75)



STANDARD RESISTANCE TAPER



NUT (M7x0.75)



WASHER (M7)

