

**PLEASE CHECK WWW.MOLEX.COM FOR LATEST PART INFORMATION**

**Part Number:** [0191600022](#)  
**Status:** **Active**  
**Description:** Closed-End Connector Insert for 12-22 AWG Wire

**General**

|                         |                             |
|-------------------------|-----------------------------|
| Product Family          | Splices                     |
| Series                  | <a href="#">19160</a>       |
| Crimp Quality Equipment | Yes                         |
| Mil-Spec                | N/A                         |
| Product Name            | Closed-End Connector Insert |

**Physical**

|                               |                        |
|-------------------------------|------------------------|
| Barrel Type                   | Closed                 |
| Insulation                    | None                   |
| Packaging Type                | Bag                    |
| Temperature Range - Operating | 149°C                  |
| Wire Insulation Diameter      | N/A                    |
| Wire Size AWG                 | 12, 14, 16, 18, 20, 22 |

**Material Info**

|                 |         |
|-----------------|---------|
| Old Part Number | CE-2212 |
|-----------------|---------|

**Reference - Drawing Numbers**

|               |              |
|---------------|--------------|
| Sales Drawing | SD-19160-009 |
|---------------|--------------|

**EU RoHS**

**ELV and RoHS  
Compliant**

**REACH SVHC**

Not Reviewed

**Halogen-Free**

**Status**

**Not Reviewed**

**China RoHS**



**Need more information on product  
environmental compliance?**

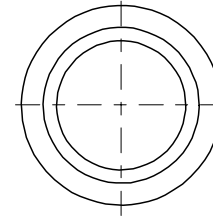
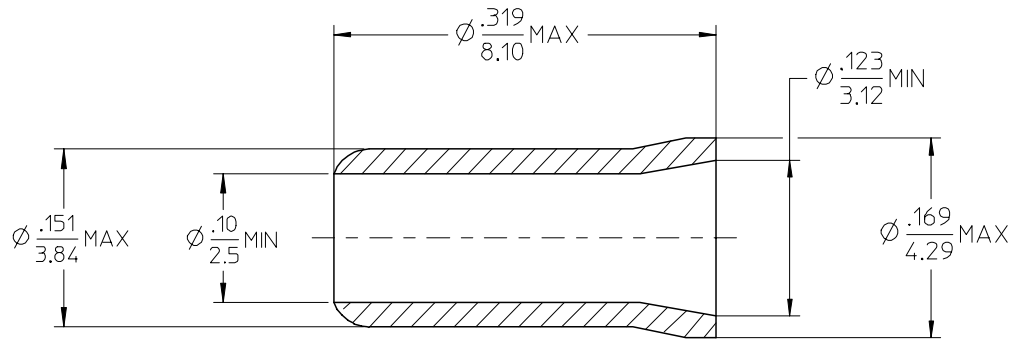
Email [productcompliance@molex.com](mailto:productcompliance@molex.com)  
For a multiple part number RoHS Certificate of  
Compliance, [click here](#)

Please visit the [Contact Us](#) section for any  
non-product compliance questions.

**Search Parts in this Series**

[19160Series](#)

|                 |                    |                         |
|-----------------|--------------------|-------------------------|
| MATERIAL NUMBER | ENGINEERING NUMBER | DESCRIPTION             |
| 191600022       | CE-2212            | LOOSE PIECE             |
| 191600146       | CE-2212 MC50       | STANDARD BAG OF 100 PCS |



# SALES DRAWING

NOTE(S):

1. MATERIAL: COPPER (.020/0.51).
2. PLATING: ELECTROPLATE TIN.
3. ALL DIMENSIONS IN INCHES/(MM).  
WIRE SIZES: 22-12 AWG  
0.34-4.0 MM

|  |                 |   |                    |                           |   |              |                        |  |
|--|-----------------|---|--------------------|---------------------------|---|--------------|------------------------|--|
| REL. TO W.MANAGER<br>EC NO: ETC2005-0078<br>DRAWN:DMYRICK 2004/10/28<br>CHKD:RDEROSS 2004/10/28<br>APPR:RDEROSS 2004/10/29 | QUALITY SYMBOLS | GENERAL TOLERANCES (UNLESS SPECIFIED)   |                    | DIMENSION STYLE           | SCALE                                       | DESIGN UNITS | THIRD ANGLE PROJECTION |  |
|  | ▽=0             | mm  | INCH               | IN/MM                     | 10:1  | INCH         |                        |  |
|  | ▽=0             | 4 PLACES ± ---  | ± ---              | DRAWN BY DATE             | TITLE                                       |              |                        |  |
|  |                 | 3 PLACES ± ---  | ± ---              | DMYRICK 2004/10/28        | INSERT<br>CLOSED-END CONNECTOR<br>22-12 AWG |              |                        |  |
|  | 2 PLACES ± ---  | ± ---   | CHECKED BY DATE    | MOLEX INCORPORATED        |   |              |                        |  |
|  | 1 PLACE ± ---   | ± ---   | RDEROSS 2004/10/28 | APPROVED BY DATE          |   |              |                        |  |
|  | ANGULAR ± ---°  |   | RDEROSS 2004/10/28 | MATERIAL NO. DOCUMENT NO. |   |              | SHEET NO.              |  |
|  |                 | DRAFT WHERE APPLICABLE<br>MUST REMAIN<br>WITHIN DIMENSIONS  |                    | SEE CHART                 |   | SD-19160-009 | 1 OF 1                 |  |
|  |                 | THIS DRAWING CONTAINS INFORMATION THAT IS PROPRIETARY TO MOLEX INCORPORATED AND SHOULD NOT BE USED WITHOUT WRITTEN PERMISSION |                    |                           |   |              |                        |  |