

**PLEASE CHECK WWW.MOLEX.COM FOR LATEST PART INFORMATION**

**Part Number:** [0482009211](#)

**Status:** **Active**

**Overview:**

**Description:** 1.27mm (.050") Pitch Compact PCI Slot, Board-to-Board Edge Card Connector, Vertical, Double-Sided, Dual Read-Out, White, with Plastic Peg, 0.25µm (10µ") Gold (Au) Plating, Voltage 5V, 184 Circuits, Lead Free

**General**

|                |                                      |
|----------------|--------------------------------------|
| Product Family | Edge Card Connectors                 |
| Series         | <a href="#">48200</a>                |
| Comments       | 5V Card Configuration                |
| Component Type | Edgecard to PCB                      |
| Overview       | <a href="#">edge_card_connectors</a> |
| Product Name   | Edge Card                            |

**Physical**

|                                |                      |
|--------------------------------|----------------------|
| Circuits (Loaded)              | 184                  |
| Circuits (maximum)             | 184                  |
| Circuits Detail                | All Signal           |
| Durability (mating cycles max) | 50                   |
| Entry Angle                    | Vertical (Top Entry) |
| Keying to Mating Part          | Yes                  |
| Material - Plating Mating      | Gold                 |
| Material - Plating Termination | Tin                  |
| PC Tail Length (in)            | 0.118 In             |
| PC Tail Length (mm)            | 3.00 mm              |
| PCB Locator                    | Yes                  |
| PCB Retention                  | Yes                  |
| PCB Thickness Recommended (in) | 0.062 In             |
| PCB Thickness Recommended (mm) | 1.60 mm              |
| Packaging Type                 | Tray                 |
| Pitch - Mating Interface (in)  | 0.050 In             |
| Pitch - Mating Interface (mm)  | 1.27 mm              |
| Plating min: Mating (µin)      | 10                   |
| Plating min: Mating (µm)       | 0.25                 |
| Polarized to Mating Part       | Yes                  |
| Temperature Range - Operating  | -10°C to +85°C       |
| Termination Interface: Style   | Through Hole         |

**Electrical**

|                               |     |
|-------------------------------|-----|
| Current - Maximum per Contact | 1A  |
| Voltage - Maximum             | 30V |

**Solder Process Data**

|                              |                        |
|------------------------------|------------------------|
| Lead-free Process Capability | Wave Capable (TH only) |
| Process Temperature max. C   | 260                    |

**Material Info**

**Reference - Drawing Numbers**

|                         |              |
|-------------------------|--------------|
| Packaging Specification | PK-48200-001 |
| Product Specification   | PS-48200-001 |
| Sales Drawing           | SD-48200-001 |
| Test Summary            | TS-48200-001 |

**EU RoHS**

**ELV and RoHS  
Compliant**

**REACH SVHC**

Not Reviewed

**Halogen-Free**

**Status**

**Not Reviewed**

**China RoHS**



**Need more information on product  
environmental compliance?**

Email [productcompliance@molex.com](mailto:productcompliance@molex.com)  
For a multiple part number RoHS Certificate of  
Compliance, [click here](#)

Please visit the [Contact Us](#) section for any  
non-product compliance questions.

**Search Parts in this Series**

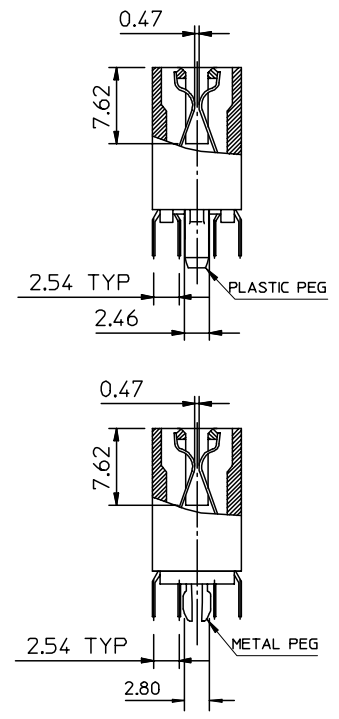
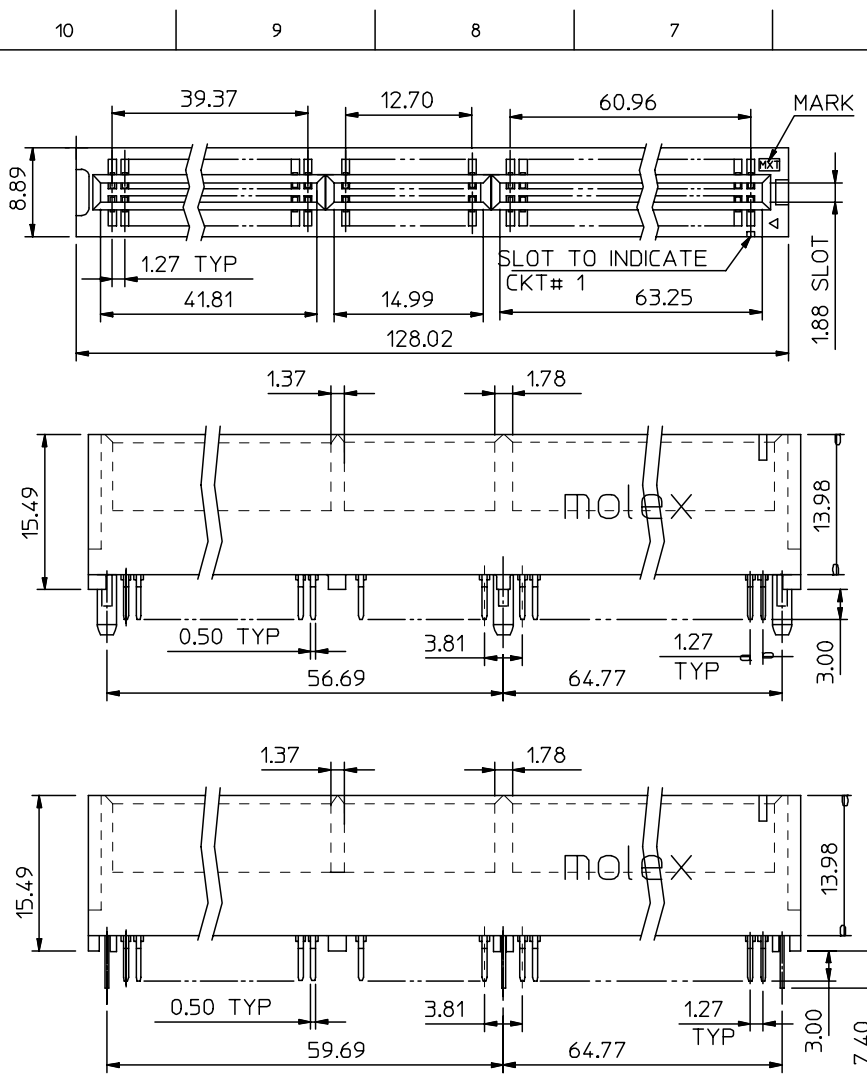
[48200Series](#)

**Mates With**

64-bit PCI card

This document was generated on 06/04/2010

**PLEASE CHECK [WWW.MOLEX.COM](http://WWW.MOLEX.COM) FOR LATEST PART INFORMATION**



NOTES:

1. MATERIAL:

HOUSING : PPS  
 TERMINAL: PHOSPHOR BRONZE



2.FINISH 0 - GOLD FLASH IN CONTACT AREA, 1.52um/60uin MIN. TIN IN SOLDER TAIL, BOTH OVER 0.76um/30uin MIN. NICKEL OVERALL.

- 1 - 0.25um/10uin MIN. GOLD IN CONTACT AREA, 1.52um/60uin MIN. TIN IN SOLDER TAIL, BOTH OVER 0.76um/30uin MIN. NICKEL OVERALL.
- 2 - 0.38um/15uin MIN. GOLD IN CONTACT AREA, 1.52um/60uin MIN. TIN IN SOLDER TAIL, BOTH OVER 0.76um/30uin MIN. NICKEL OVERALL.
- 3 - 0.76um/30uin MIN. GOLD IN CONTACT AREA, 1.52um/60uin MIN. TIN IN SOLDER TAIL, BOTH OVER 0.76um/30uin MIN. NICKEL OVERALL.
- 4 - 0.50um/20uin MIN. GOLD IN CONTACT AREA, 1.52um/60uin MIN. TIN IN SOLDER TAIL, BOTH OVER 0.76um/30uin MIN. NICKEL OVERALL.

- 3. PRODUCT SPECIFICATION REFER TO PS-48200-001.
- 4. PRODUCT SPECIFICATION : PER PS-48200-001
- 5. TEST SUMMARY : PER TS-48200-001
- 6. PACKAGE SPECIFICATION : PK-48200-001
- 7. LEAD FREE AND ROHS COMPLIANT PRODUCT

PART NO. LEGEND : 48200 - 92\*\*

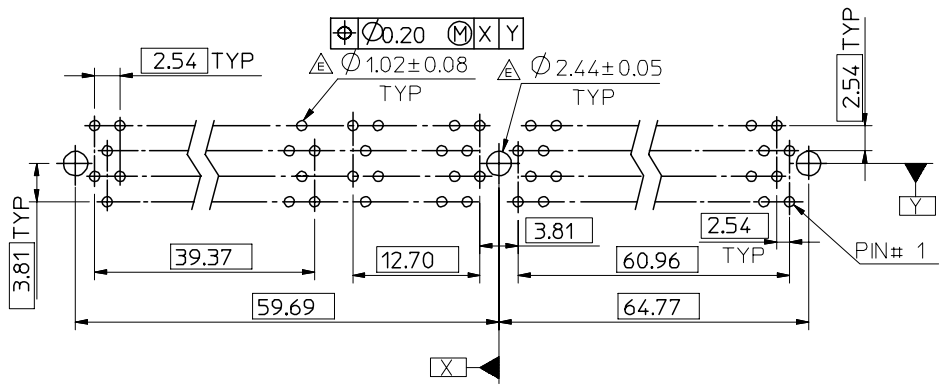
PEG VERSION, COLOR \_\_\_\_\_ PLATING VERSION (REFER TO NOTES 2)  
 0:STANDARD , BROWN , 5V, PLASTIC PEG  
 1:STANDARD , WHITE , 5V, PLASTIC PEG  
 5:STANDARD , WHITE , 5V, METAL PEG

|   |               |            |  |                                       |             |                 |              |                    |  |                        |  |  |
|---|---------------|------------|--|---------------------------------------|-------------|-----------------|--------------|--------------------|--|------------------------|--|--|
| DRAWING ERROR   | EC NO:        | 2007/03/05 | QUALITY SYMBOLS                                      | GENERAL TOLERANCES (UNLESS SPECIFIED) |             | DIMENSION STYLE |              | SCALE              | DESIGN UNITS                                       | THIRD ANGLE PROJECTION |  |  |
|   | DRWN:ALLIN    | 2007/03/09 |  | mm                                    | INCH        | MM ONLY         |              | 2:1                | METRIC   |                        |  |  |
|   | CHKD:         | 2007/03/13 |  | 4 PLACES                              | ± ---       | ± ---           | DRAWN BY     | DATE               | TITLE  |                        |  |  |
|   | APPR:WWSCHANG | 2007/03/13 |  | 3 PLACES                              | ± ---       | ± ---           | TOM          | 2005/02/04         | ASS'Y 1.27MM EDGE CARD<br>CONN 184 CKT (3.3V & 5V) |                        |  |  |
| REV   | DESCRIPTION   |            | 2 PLACES   | ± 0.25                                | ± ---       | CHECKED BY      | DATE         | MOLEX INCORPORATED |  |                        |  |  |
|   |               |            | 1 PLACE  | ± 0.25                                | ± ---       | ALL IN          | 2005/02/04   |                    |  |                        |  |  |
|   |               |            | ANGULAR ± 3 °  |                                       | APPROVED BY |                 | DATE         | MATERIAL NO.       |  |                        |  |  |
|   |               |            | DRAFT WHERE APPLICABLE MUST REMAIN WITHIN DIMENSIONS |                                       | WWSCHANG    |                 | 2005/02/04   | DOCUMENT NO.       |  | SHEET NO.              |  |  |
|   |               |            |  |                                       | SEE TABLE   |                 | SD-48200-001 |                    | 1 OF 4   |                        |  |  |
| THIS DRAWING CONTAINS INFORMATION THAT IS PROPRIETARY TO MOLEX INCORPORATED AND SHOULD NOT BE USED WITHOUT WRITTEN PERMISSION |               |            |  |                                       |             |                 |              |                    |  |                        |  |  |

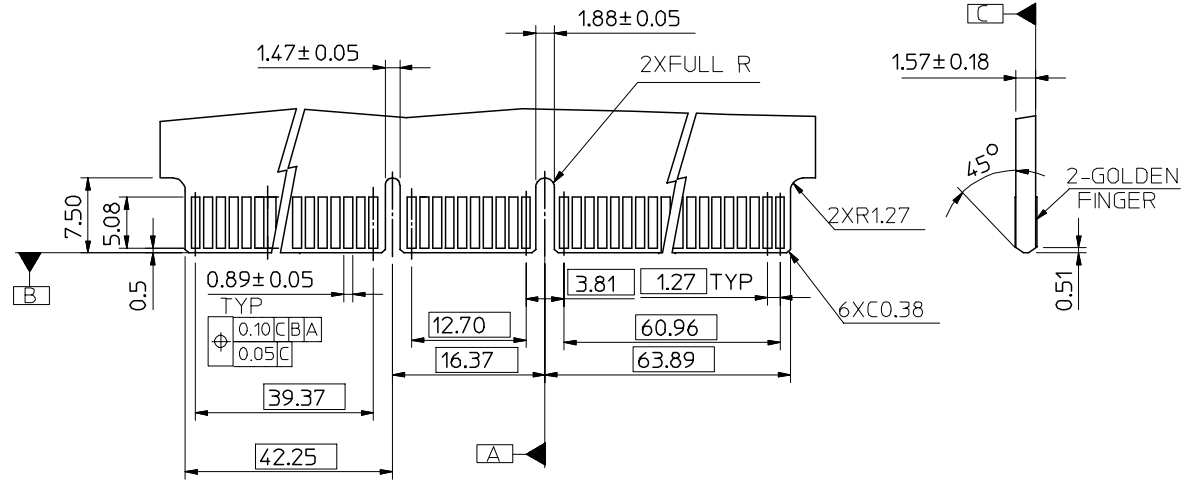
10 9 8 7 6 5 4 3 2 1

F  
E  
D  
C  
B  
A

F  
E  
D  
C  
B  
A



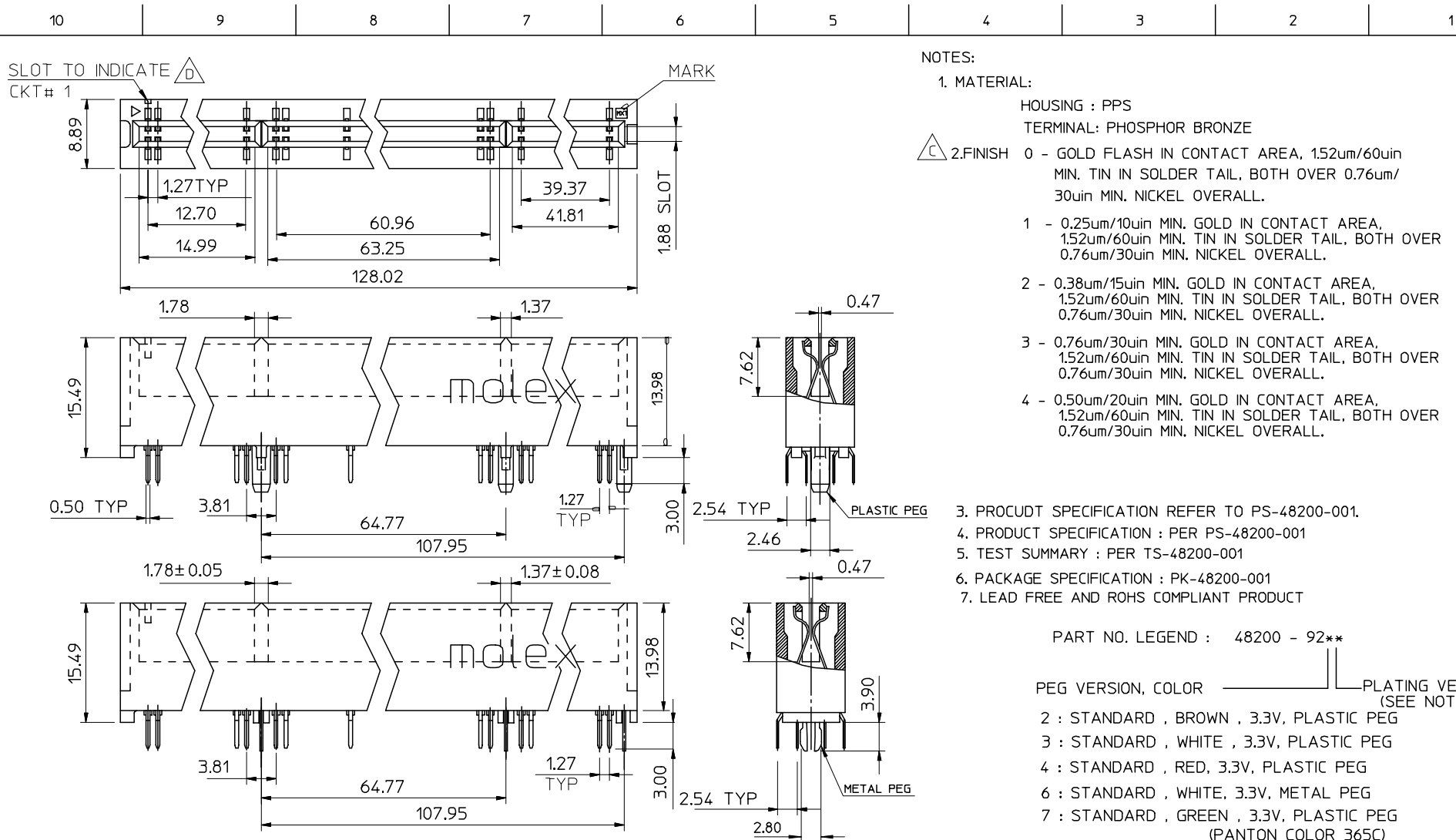
RECOMMENDED P.C. BOARD PATTERN



RECOMMENDED MATING P.C. BOARD EDGE CONFIGURATION

|   |  |                               |                                       |          |                            |             |              |                          |                        |           |  |  |
|---|--|-------------------------------|---------------------------------------|----------|----------------------------|-------------|--------------|--------------------------|------------------------|-----------|--|--|
| SEE SHEET 1<br>EC NO: SH2007-0620<br>DRWN: ALLIN<br>CHKD:<br>APPR: WWSCHANG   | 2007/03/05<br>2007/03/09<br>2007/03/13 | QUALITY SYMBOLS<br>▽=0<br>▽=0 | GENERAL TOLERANCES (UNLESS SPECIFIED) |          | DIMENSION STYLE<br>MM ONLY |             | SCALE<br>2:1 | DESIGN UNITS<br>METRIC   | THIRD ANGLE PROJECTION |           |  |  |
|   |  |                               |                                       | mm       | INCH                       | DRAWN BY    | DATE         | TITLE                    |                        |           |  |  |
|   |  |                               | 4 PLACES                              | ± ---    | ± ---                      | TOM         | 2005/02/04   | ASS'Y 1.27MM EDGE CARD   |                        |           |  |  |
|   |  |                               | 3 PLACES                              | ± ---    | ± ---                      | CHECKED BY  | DATE         | CONN 184 CKT (3.3V & 5V) |                        |           |  |  |
|   | 2 PLACES                               | ± 0.25                        | ± ---                                 | ALL IN   | 2005/02/04                 | APPROVED BY |              |                          |                        |           |  |  |
|   | 1 PLACE                                | ± 0.25                        | ± ---                                 | WWSCHANG | 2005/02/04                 | DATE        |              |                          |                        |           |  |  |
|   |  |                               | ANGULAR ± 3 °                         |          | MATERIAL NO.               |             | DOCUMENT NO. |                          |                        | SHEET NO. |  |  |
| DRAFT WHERE APPLICABLE MUST REMAIN WITHIN DIMENSIONS  |  |                               | SEE TABLE                             |          | SD-48200-001               |             |              | 2 OF 4                   |                        |           |  |  |
| THIS DRAWING CONTAINS INFORMATION THAT IS PROPRIETARY TO MOLEX INCORPORATED AND SHOULD NOT BE USED WITHOUT WRITTEN PERMISSION |  |                               |                                       |          |                            |             |              |                          |                        |           |  |  |

9 8 7 6 5 4 3 2 1



NOTES:

1. MATERIAL:

HOUSING : PPS  
 TERMINAL: PHOSPHOR BRONZE



- 2.FINISH 0 - GOLD FLASH IN CONTACT AREA, 1.52um/60uin MIN. TIN IN SOLDER TAIL, BOTH OVER 0.76um/30uin MIN. NICKEL OVERALL.  
 1 - 0.25um/10uin MIN. GOLD IN CONTACT AREA, 1.52um/60uin MIN. TIN IN SOLDER TAIL, BOTH OVER 0.76um/30uin MIN. NICKEL OVERALL.  
 2 - 0.38um/15uin MIN. GOLD IN CONTACT AREA, 1.52um/60uin MIN. TIN IN SOLDER TAIL, BOTH OVER 0.76um/30uin MIN. NICKEL OVERALL.  
 3 - 0.76um/30uin MIN. GOLD IN CONTACT AREA, 1.52um/60uin MIN. TIN IN SOLDER TAIL, BOTH OVER 0.76um/30uin MIN. NICKEL OVERALL.  
 4 - 0.50um/20uin MIN. GOLD IN CONTACT AREA, 1.52um/60uin MIN. TIN IN SOLDER TAIL, BOTH OVER 0.76um/30uin MIN. NICKEL OVERALL.

3. PROCUDT SPECIFICATION REFER TO PS-48200-001.  
 4. PRODUCT SPECIFICATION : PER PS-48200-001  
 5. TEST SUMMARY : PER TS-48200-001  
 6. PACKAGE SPECIFICATION : PK-48200-001  
 7. LEAD FREE AND ROHS COMPLIANT PRODUCT

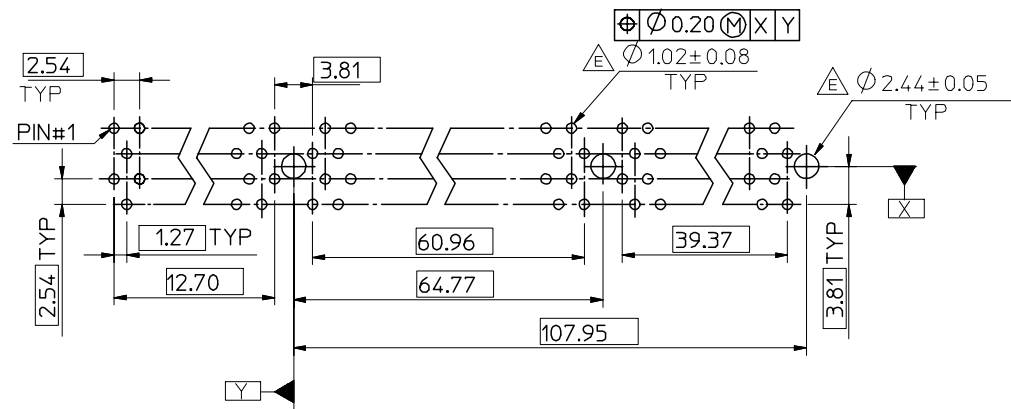
PART NO. LEGEND : 48200 - 92\*\*

- PEG VERSION, COLOR \_\_\_\_\_ PLATING VERSION (SEE NOTES 2)  
 2 : STANDARD , BROWN , 3.3V, PLASTIC PEG  
 3 : STANDARD , WHITE , 3.3V, PLASTIC PEG  
 4 : STANDARD , RED , 3.3V, PLASTIC PEG  
 6 : STANDARD , WHITE, 3.3V, METAL PEG  
 7 : STANDARD , GREEN , 3.3V, PLASTIC PEG (PANTON COLOR 365C)  
 8 : STANDARD , BLACK , 3.3V, PLASTIC PEG

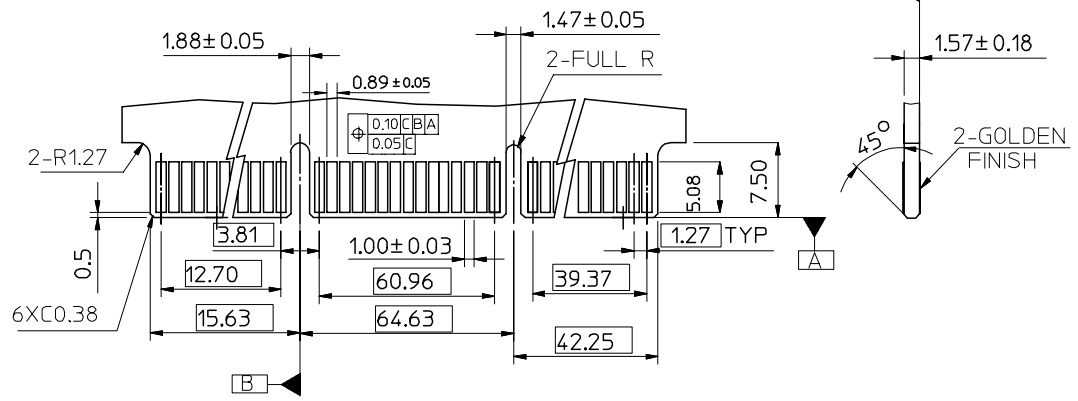
| SEE SHEET 1<br>EC NO: SH2007-0620<br>DRWN:ALLIN<br>CHKD:<br>APPR:WWSCHANG<br>REV DESCRIPTION | QUALITY SYMBOLS   | GENERAL TOLERANCES (UNLESS SPECIFIED)   | DIMENSION STYLE   | SCALE | DESIGN UNITS | THIRD ANGLE PROJECTION |       |          |          |       |          |          |        |         |         |        |  |          |      |        |     |            |                        |            |      |  |        |            |                          |             |      |  |          |            |  |  |              |              |           |  |              |        |
|--|---|---|---|-------|--------------|------------------------|-------|----------|----------|-------|----------|----------|--------|---------|---------|--------|--|----------|------|--------|-----|------------|------------------------|------------|------|--|--------|------------|--------------------------|-------------|------|--|----------|------------|--|--|--------------|--------------|-----------|--|--------------|--------|
|  | $\nabla=0$<br>$\triangle=0$   | <table border="1"> <thead> <tr> <th></th> <th>mm</th> <th>INCH</th> </tr> </thead> <tbody> <tr> <td>4 PLACES</td> <td>± ---</td> <td>± ---</td> </tr> <tr> <td>3 PLACES</td> <td>± ---</td> <td>± ---</td> </tr> <tr> <td>2 PLACES</td> <td>± 0.25</td> <td>± ---</td> </tr> <tr> <td>1 PLACE</td> <td>± 0.25</td> <td>± ---</td> </tr> </tbody> </table> |   | mm    | INCH         | 4 PLACES               | ± --- | ± ---    | 3 PLACES | ± --- | ± ---    | 2 PLACES | ± 0.25 | ± ---   | 1 PLACE | ± 0.25 | ± ---  | MM ONLY  | 2:1  | METRIC |     |            |                        |            |      |  |        |            |                          |             |      |  |          |            |  |  |              |              |           |  |              |        |
|  |   | mm  | INCH  |       |              |                        |       |          |          |       |          |          |        |         |         |        |  |          |      |        |     |            |                        |            |      |  |        |            |                          |             |      |  |          |            |  |  |              |              |           |  |              |        |
|  | 4 PLACES  | ± ---   | ± ---   |       |              |                        |       |          |          |       |          |          |        |         |         |        |  |          |      |        |     |            |                        |            |      |  |        |            |                          |             |      |  |          |            |  |  |              |              |           |  |              |        |
| 3 PLACES   | ± ---   | ± ---   |   |       |              |                        |       |          |          |       |          |          |        |         |         |        |  |          |      |        |     |            |                        |            |      |  |        |            |                          |             |      |  |          |            |  |  |              |              |           |  |              |        |
| 2 PLACES   | ± 0.25  | ± ---   |   |       |              |                        |       |          |          |       |          |          |        |         |         |        |  |          |      |        |     |            |                        |            |      |  |        |            |                          |             |      |  |          |            |  |  |              |              |           |  |              |        |
| 1 PLACE  | ± 0.25  | ± ---   |   |       |              |                        |       |          |          |       |          |          |        |         |         |        |  |          |      |        |     |            |                        |            |      |  |        |            |                          |             |      |  |          |            |  |  |              |              |           |  |              |        |
|  | <table border="1"> <thead> <tr> <th></th> <th>mm</th> <th>INCH</th> </tr> </thead> <tbody> <tr> <td>4 PLACES</td> <td>± ---</td> <td>± ---</td> </tr> <tr> <td>3 PLACES</td> <td>± ---</td> <td>± ---</td> </tr> <tr> <td>2 PLACES</td> <td>± 0.25</td> <td>± ---</td> </tr> <tr> <td>1 PLACE</td> <td>± 0.25</td> <td>± ---</td> </tr> </tbody> </table> |   | mm  | INCH  | 4 PLACES     | ± ---                  | ± --- | 3 PLACES | ± ---    | ± --- | 2 PLACES | ± 0.25   | ± ---  | 1 PLACE | ± 0.25  | ± ---  | <table border="1"> <thead> <tr> <th>DRAWN BY</th> <th>DATE</th> <th>TITLE</th> </tr> </thead> <tbody> <tr> <td>TOM</td> <td>2005/02/04</td> <td>ASS'Y 1.27MM EDGE CARD</td> </tr> <tr> <th>CHECKED BY</th> <th>DATE</th> <th></th> </tr> <tr> <td>ALL IN</td> <td>2005/02/04</td> <td>CONN 184 CKT (3.3V &amp; 5V)</td> </tr> <tr> <th>APPROVED BY</th> <th>DATE</th> <th></th> </tr> <tr> <td>WWSCHANG</td> <td>2005/02/04</td> <td></td> </tr> </tbody> </table> | DRAWN BY | DATE | TITLE  | TOM | 2005/02/04 | ASS'Y 1.27MM EDGE CARD | CHECKED BY | DATE |  | ALL IN | 2005/02/04 | CONN 184 CKT (3.3V & 5V) | APPROVED BY | DATE |  | WWSCHANG | 2005/02/04 |  | <table border="1"> <thead> <tr> <th>MATERIAL NO.</th> <th>DOCUMENT NO.</th> <th>SHEET NO.</th> </tr> </thead> <tbody> <tr> <td></td> <td>SD-48200-001</td> <td>3 OF 4</td> </tr> </tbody> </table> | MATERIAL NO. | DOCUMENT NO. | SHEET NO. |  | SD-48200-001 | 3 OF 4 |
|  | mm  | INCH  |   |       |              |                        |       |          |          |       |          |          |        |         |         |        |  |          |      |        |     |            |                        |            |      |  |        |            |                          |             |      |  |          |            |  |  |              |              |           |  |              |        |
| 4 PLACES   | ± ---   | ± ---   |   |       |              |                        |       |          |          |       |          |          |        |         |         |        |  |          |      |        |     |            |                        |            |      |  |        |            |                          |             |      |  |          |            |  |  |              |              |           |  |              |        |
| 3 PLACES   | ± ---   | ± ---   |   |       |              |                        |       |          |          |       |          |          |        |         |         |        |  |          |      |        |     |            |                        |            |      |  |        |            |                          |             |      |  |          |            |  |  |              |              |           |  |              |        |
| 2 PLACES   | ± 0.25  | ± ---   |   |       |              |                        |       |          |          |       |          |          |        |         |         |        |  |          |      |        |     |            |                        |            |      |  |        |            |                          |             |      |  |          |            |  |  |              |              |           |  |              |        |
| 1 PLACE  | ± 0.25  | ± ---   |   |       |              |                        |       |          |          |       |          |          |        |         |         |        |  |          |      |        |     |            |                        |            |      |  |        |            |                          |             |      |  |          |            |  |  |              |              |           |  |              |        |
| DRAWN BY   | DATE  | TITLE   |   |       |              |                        |       |          |          |       |          |          |        |         |         |        |  |          |      |        |     |            |                        |            |      |  |        |            |                          |             |      |  |          |            |  |  |              |              |           |  |              |        |
| TOM  | 2005/02/04  | ASS'Y 1.27MM EDGE CARD  |   |       |              |                        |       |          |          |       |          |          |        |         |         |        |  |          |      |        |     |            |                        |            |      |  |        |            |                          |             |      |  |          |            |  |  |              |              |           |  |              |        |
| CHECKED BY   | DATE  |   |   |       |              |                        |       |          |          |       |          |          |        |         |         |        |  |          |      |        |     |            |                        |            |      |  |        |            |                          |             |      |  |          |            |  |  |              |              |           |  |              |        |
| ALL IN   | 2005/02/04  | CONN 184 CKT (3.3V & 5V)  |   |       |              |                        |       |          |          |       |          |          |        |         |         |        |  |          |      |        |     |            |                        |            |      |  |        |            |                          |             |      |  |          |            |  |  |              |              |           |  |              |        |
| APPROVED BY  | DATE  |   |   |       |              |                        |       |          |          |       |          |          |        |         |         |        |  |          |      |        |     |            |                        |            |      |  |        |            |                          |             |      |  |          |            |  |  |              |              |           |  |              |        |
| WWSCHANG   | 2005/02/04  |   |   |       |              |                        |       |          |          |       |          |          |        |         |         |        |  |          |      |        |     |            |                        |            |      |  |        |            |                          |             |      |  |          |            |  |  |              |              |           |  |              |        |
| MATERIAL NO.   | DOCUMENT NO.  | SHEET NO.   |   |       |              |                        |       |          |          |       |          |          |        |         |         |        |  |          |      |        |     |            |                        |            |      |  |        |            |                          |             |      |  |          |            |  |  |              |              |           |  |              |        |
|  | SD-48200-001  | 3 OF 4  |   |       |              |                        |       |          |          |       |          |          |        |         |         |        |  |          |      |        |     |            |                        |            |      |  |        |            |                          |             |      |  |          |            |  |  |              |              |           |  |              |        |
|  | DRAFT WHERE APPLICABLE MUST REMAIN WITHIN DIMENSIONS  | SEE TABLE   | THIS DRAWING CONTAINS INFORMATION THAT IS PROPRIETARY TO MOLEX INCORPORATED AND SHOULD NOT BE USED WITHOUT WRITTEN PERMISSION |       |              |                        |       |          |          |       |          |          |        |         |         |        |  |          |      |        |     |            |                        |            |      |  |        |            |                          |             |      |  |          |            |  |  |              |              |           |  |              |        |

10 9 8 7 6 5 4 3 2 1

F  
E  
D  
C  
B  
A



RECOMMENDED P.C BOARD PATTERN



RECOMMENDED MATING P.C. BOARD EDGE CONFIGURATION

|   |  |                    |  |  |  |   |                    |                        |
|---|--|--------------------|--|--|--|---|--------------------|------------------------|
| SEE SHEET 1<br>EC NO: SH2007-0620<br>DRWN: ALLIN<br>CHKD:<br>APPR: WWSCHANG | 2007/03/05<br>2007/03/09<br>2007/03/13 | DESCRIPTION<br>REV | QUALITY SYMBOLS  | GENERAL TOLERANCES (UNLESS SPECIFIED)  | DIMENSION STYLE  | SCALE   | DESIGN UNITS       | THIRD ANGLE PROJECTION |
|   |  |                    | $\nabla = 0$<br>$\nabla C = 0$   | mm      INCH   | MM ONLY  | 2:1   | METRIC             | □      ◯               |
|   |  |                    | 4 PLACES ± --- ± ---<br>3 PLACES ± --- ± ---<br>2 PLACES ± 0.25 ± ---<br>1 PLACE ± 0.25 ± ---<br>ANGULAR ± 3 ° | DRAWN BY: TOM<br>CHECKED BY: ALL IN<br>APPROVED BY: WWSCHANG<br>MATERIAL NO. | DATE: 2005/02/04<br>DATE: 2005/02/04<br>DATE: 2005/02/04 | TITLE: ASS'Y 1.27MM EDGE CARD<br>CONN 184 CKT (3.3V & 5V) | MOLEX INCORPORATED |                        |
|   |  |                    | DRAFT WHERE APPLICABLE<br>MUST REMAIN<br>WITHIN DIMENSIONS   | SEE TABLE  | DOCUMENT NO. SD-48200-001                                | SHEET NO. 4 OF 4  |                    |                        |

9 8 7 6 5 4 3 2 1