

## D-Series



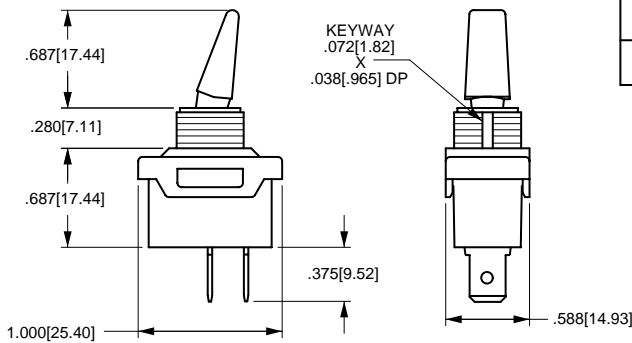
The D-Series toggle switches are single pole and have ratings up to 20 amps and 1-1/2 horsepower. These switches have a nylon toggle and base, and are also available with integrated wire leads.

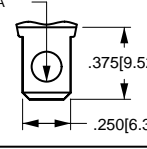
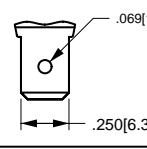
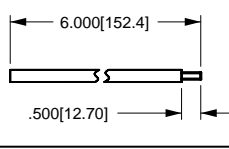
### Specifications

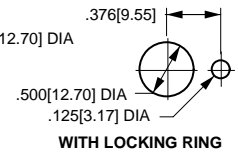
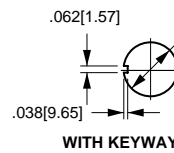
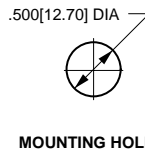
- Certifications\*: UL, CSA
- Dielectric Strength: 1,000 V (minimum)
- Insulation Resistance: 100 Megohms (minimum)
- Base Material: Nylon
- Actuator Material: Nylon
- Bushing Material: Polycarbonate

\* Due to ongoing technological advances, consult factory for certification specifics.

### Dimensional Specifications: in. [mm]



 SOLDER LUG	 .250 TAB (Q.C.)	 INTEGRATED WIRE LEAD (no exposed conductors)
TERMINAL TYPE		



<b>D</b>	<b>A</b>	<b>22</b>	<b>1</b>	<b>-</b>	<b>P</b>	<b>B</b>	<b>-</b>	<b>B</b>
<b>SERIES</b>	<b>RATING</b>		<b>TERMINATION</b>		<b>TOGGLE STYLE</b>		<b>TOGGLE COLOR<sup>1</sup></b>	
<b>D</b> SINGLE POLE TOGGLE	<b>10</b> 5A 250VAC 10A 125VAC 1/2HP 125-250VAC	<b>11</b> 5A 250VAC 10A 125VAC	<b>0</b> SOLDER LUG <b>1</b> .250TAB (QC) <b>5</b> WIRE LEAD		<b>B</b> BAT <b>P</b> PADDLE	<b>B</b> BLACK <b>W</b> WHITE		<b>BUSHING<sup>1</sup></b> <b>B</b> BLACK <b>W</b> WHITE
<b>CIRCUIT</b>	<b>A</b> ON-NONE-OFF <b>B</b> ON-NONE-ON <b>C</b> ON-OFF-ON	<b>22</b> 10A 250VAC 20A 125VAC 1 1/2HP 125-250VAC <b>23</b> 10A 250VAC 20A 125VAC <b>60</b> 3A 250VAC 6A 125VAC 1/4HP 125-250VAC						

NOTES:  
Shading indicates standard configurations.  
Available with neoprene seal. Consult factory.  
1 Custom colors are available. Consult factory.