

Monolithic crystal filter

MQF18.368-3000/01



Application

- 2 pol filter
- i.f.- filter
- use in mobile and stationary transceivers

Limiting values

		Unit	Value
Center frequency	f_0	MHz	18.368
Insertion loss		dB	≤ 1.0
Pass band at 3.0 dB		kHz	± 15.00
Ripple in pass band	$f_0 \pm 9.00$ kHz	dB	≤ 0.5
Stop band attenuation	$f_0 \pm 45$ kHz	dB	≥ 15
	$f_0 \pm 75$ kHz	dB	> 20 except spurious
Alternate attenuation	$f_0 + 350 \dots 1000$ kHz	dB	> 35 except spurious
	$f_0 - 300 \dots 1000$ kHz	dB	> 45

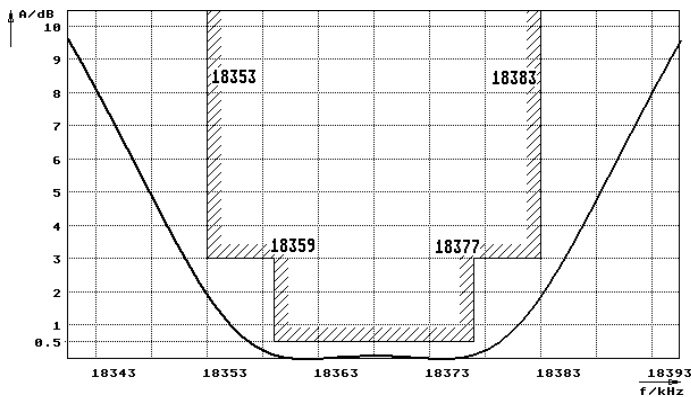
Terminating impedance Z

R1 C1	Ohm/pF	2700 0
R2 C2	Ohm/pF	2700 0

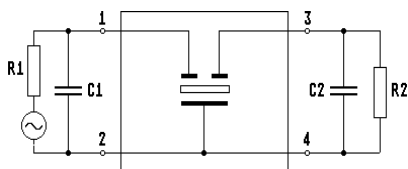
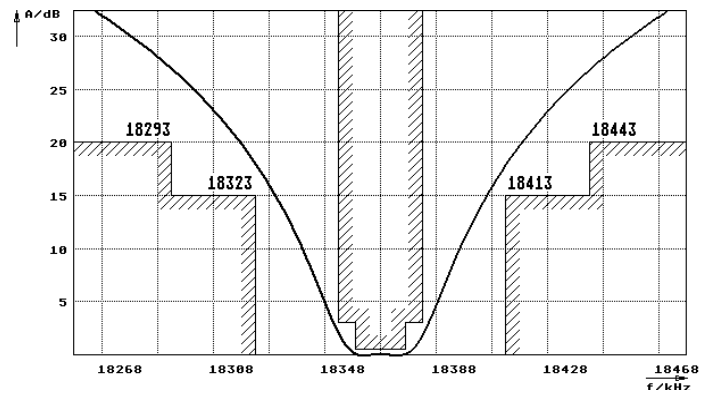
Operating temp. range	°C	-25... +70
-----------------------	----	------------

Characteristics MQF18.368-3000/01

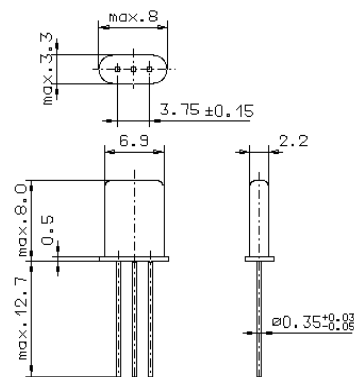
Pass band



Stop band



Pin connections: 1 Input
2 Input-E
3 Output
4 Output-E



GH9