

Large-Current Choke Coils

MPC Series

[Comply with RoHS]

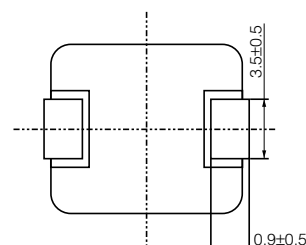
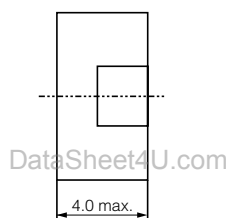
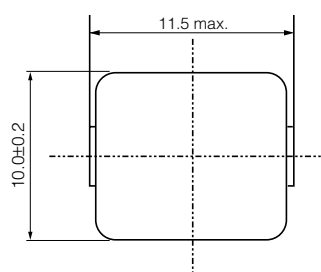


Model	Inductance (μH) at 100KHz	DC resistance (m Ω) typ.	Rated current (A)
MPC1040LR36	0.36 \pm 20%	1.05 \pm 10%	25
MPC1040LR56	0.56 \pm 20%	1.30 \pm 10%	23
MPC1250LR50	0.50 \pm 20%	0.80 \pm 10%	35

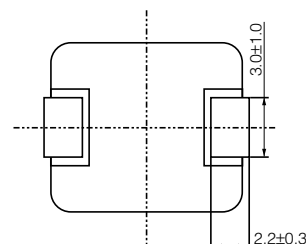
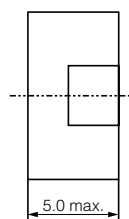
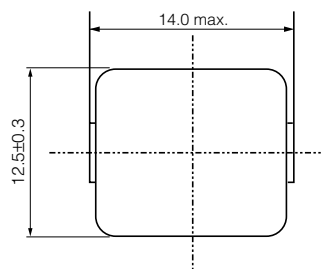
● Rated current : T=40K rise at rated current.

Shape and Dimensions

- MPC1040LR36
- MPC1040LR56



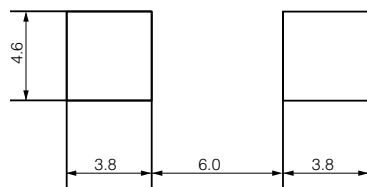
- MPC1250LR50



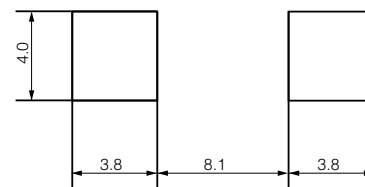
[mm]

Recommended Land Pattern

- MPC1040LR36
- MPC1040LR56



- MPC1250LR50



[mm]

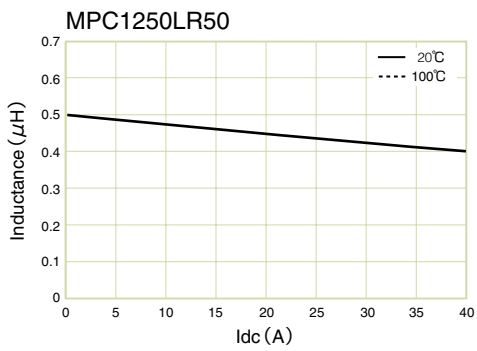
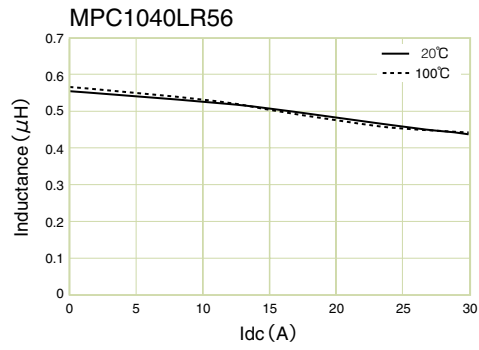
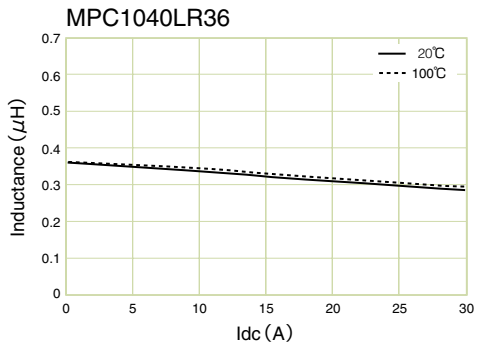
Numbering System

MPC - 1040 - LR36

- ① Series
- ② Dimensions 10...WXD:11.5×10 mm 40...H:4.0 mm
- ③ Inductance R36...0.36 μH

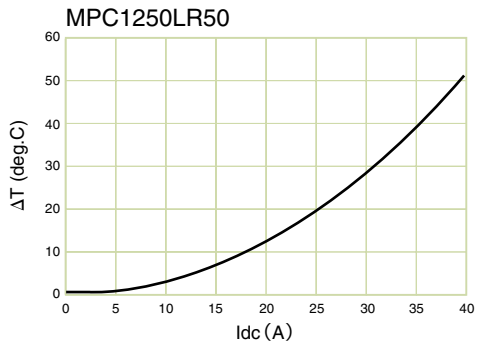
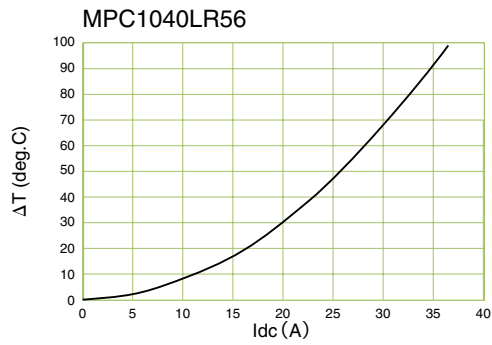
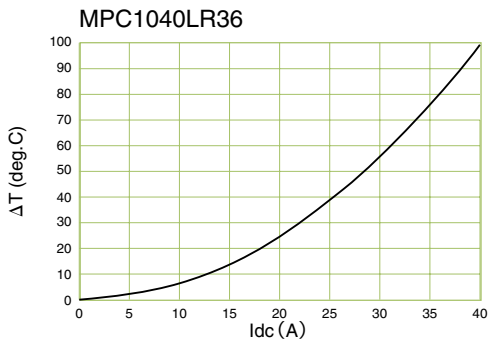
www.DataSheet4U.com

DC-Superposed Characteristics



DataSheet4U.com

Temperature rise

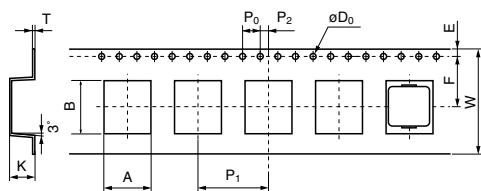


DataSheet4U.com

www.DataSheet4U.com

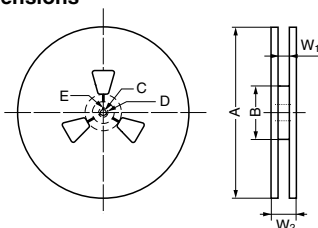
MPC1040Series (1000pcs./reel)

Dimensions of indented square hole plastic tape



											[mm]
A	B	W	F	E	P ₁	P ₂	P ₀	ϕD_0	T	K	
± 0.1	± 0.1	± 0.3	± 0.1	± 0.1	± 0.1	± 0.1	± 0.1	± 0.05	± 0.05	± 0.1	
10.5	12.1	24.0	11.5	1.75	16.0	2.0	4.0	1.55	0.4	5.2	

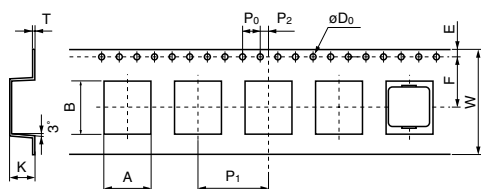
Reel dimensions



								[mm]
A	B	C	D	E	r	W ₁	W ₂	
± 5.0	± 5.0	± 0.5	± 1.0	± 0.5	R1.0	± 2.0	± 3.0	
$\phi 330$	$\phi 80$	$\phi 13.5$	$\phi 21.0$	2.0		24.4	30.4	

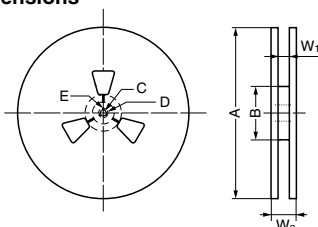
MPC1250Series (500pcs./reel)

Dimensions of indented square hole plastic tape



											[mm]
A	B	W	F	E	P ₁	P ₂	P ₀	ϕD_0	T	K	
± 0.2	± 0.2	± 0.4	± 0.2	± 0.2	± 0.2	± 0.2	± 0.2	± 0.02	± 0.1	± 0.2	
13.1	14.6	24.0	11.5	1.75	24.0	2.0	4.0	1.5	0.4	5.3	

Reel dimensions



								[mm]
A	B	C	D	E	r	W ₁	W ₂	
± 2.0	± 5.0	± 0.5	± 0.8	± 0.5	2.0	± 2.0	± 3.0	
$\phi 380$	$\phi 100$	$\phi 13.0$	$\phi 21.0$		R1.0	25.5	28.5	

DataSheet4U.com

et4U.com