

PLEASE CHECK WWW.MOLEX.COM FOR LATEST PART INFORMATION

Part Number: [0330122002](#)
Status: **Active**
Overview: [mx150 sealed connector system](#)
Description: MX150™ Female Terminal, Tin (Sn) Plating, 18-20 AWG, Right Reel Payoff, Small Polarization Rib, Contact Material Thickness 0.30mm (.012")

Documents:

[Drawing \(PDF\)](#) [RoHS Certificate of Compliance \(PDF\)](#)

General

Product Family	Crimp Terminals
Series	33012
Comments	Right Reel Payoff, Small Polarization Rib
Crimp Quality Equipment	Yes
Overview	mx150 sealed connector system
Product Name	MX150™

Physical

Gender	Female
Material - Metal	High Performance Alloy (HPA)
Material - Plating Mating	Tin
Material - Plating Termination	Tin
Packaging Type	Reel
Plating min: Mating (µin)	20.00
Plating min: Mating (µm)	0.500
Plating min: Termination (µin)	20.00
Plating min: Termination (µm)	0.50
Termination Interface: Style	Crimp or Compression
Wire Insulation Diameter	2.60mm (.102") max.
Wire Size AWG	18, 20
Wire Size mm²	0.75, 1.00

Electrical

Current - Maximum per Contact	22A
Voltage - Maximum	250V

Material Info

Reference - Drawing Numbers

Sales Drawing	SD-33012-002
---------------	--------------

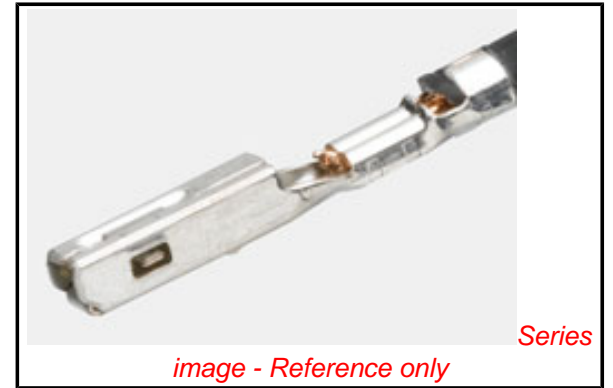


image - Reference only

EU RoHS

**ELV and RoHS
Compliant**
**REACH SVHC
Contains SVHC: No**
**Halogen-Free
Status**

China RoHS



**Need more information on product
environmental compliance?**

Email productcompliance@molex.com
 For a multiple part number RoHS Certificate of Compliance, [click here](#)

Please visit the [Contact Us](#) section for any non-product compliance questions.

Search Parts in this Series

[33012Series](#)

Use With

[33472](#) Dual Row Housing, [33476](#) Hybrid Housing, [33471](#) Single Row Housing

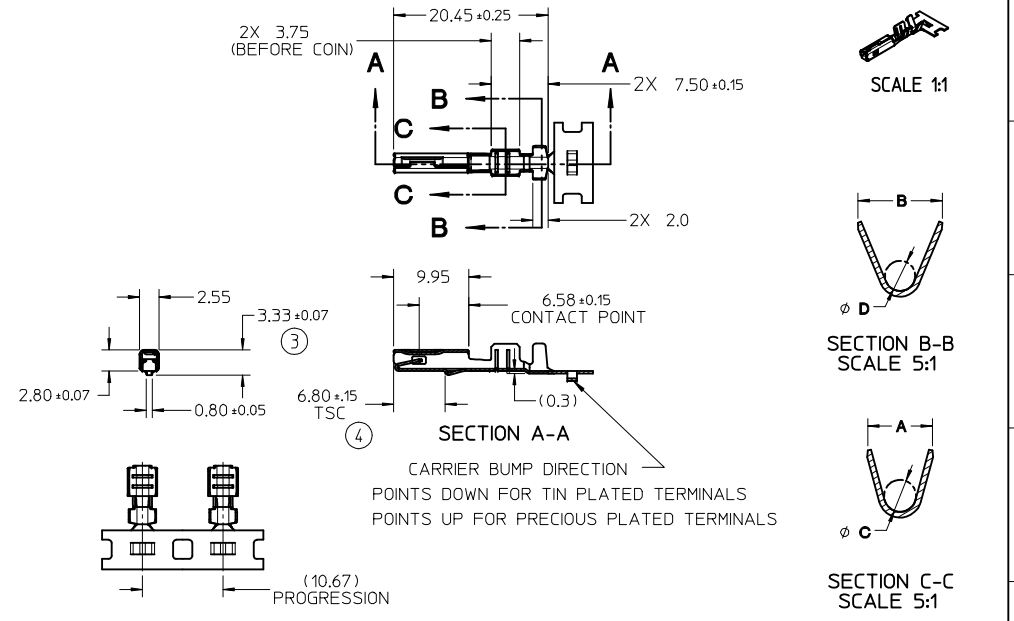
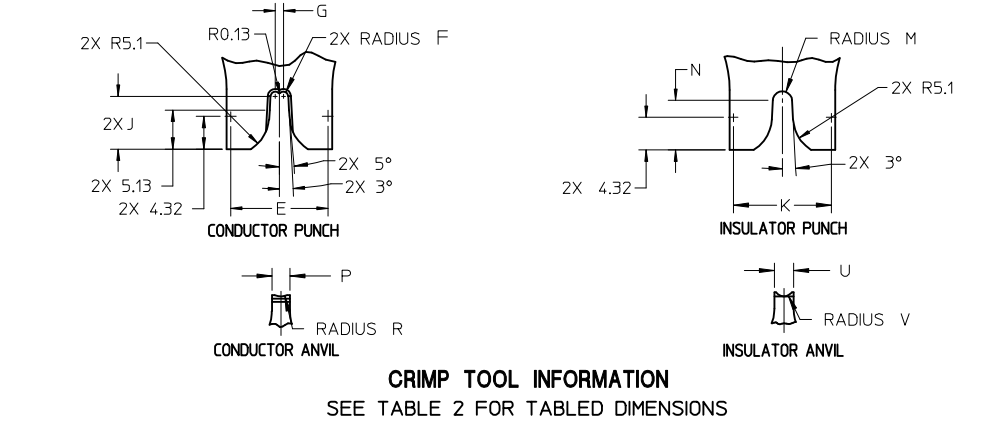
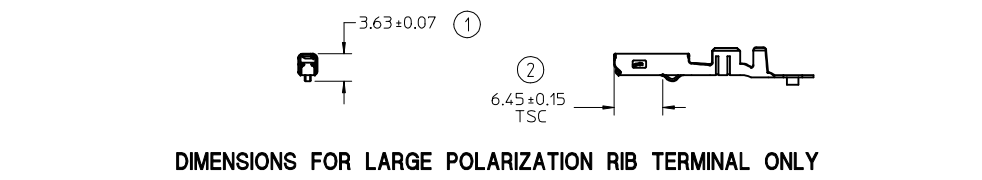
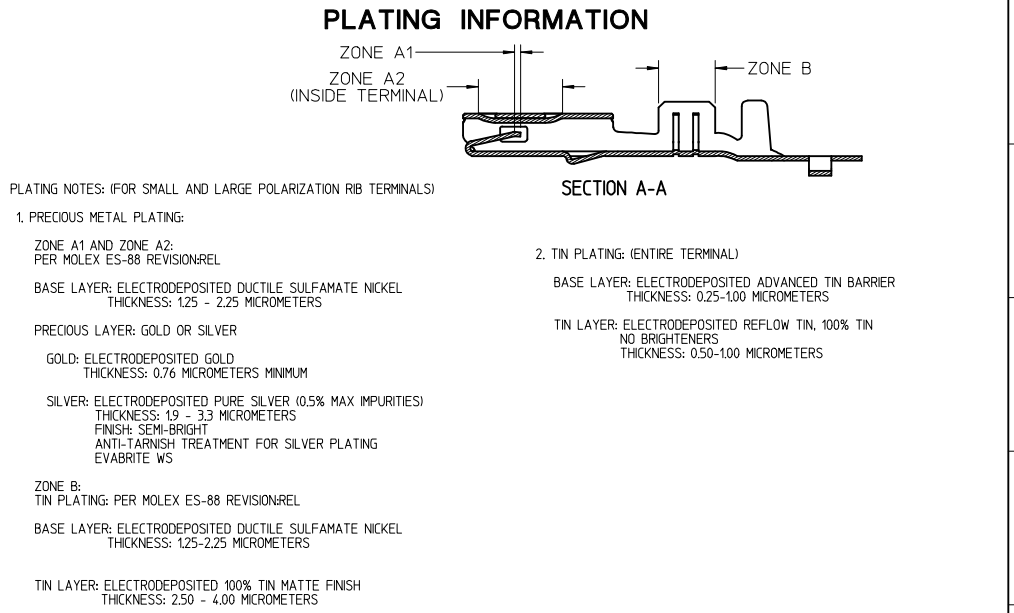
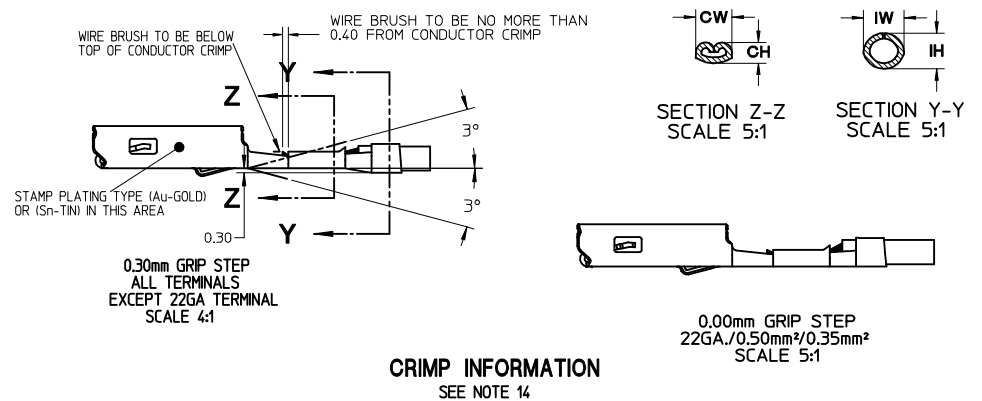
Application Tooling | FAQ

Tooling specifications and manuals are found by selecting the products below. Crimp Height Specifications are then contained in the Application Tooling Specification document.

Global

Description	Product #
Manual Extraction Tool	0638131500
Hand Crimp Tool, 18-22AWG	0638116000
Hand Crimp Tool, Metric 1.00 and 1.50	0638116100

PLEASE CHECK WWW.MOLEX.COM FOR LATEST PART INFORMATION



- NOTES: (UNLESS OTHERWISE SPECIFIED)
- MATING TERMINAL SHOWN ON SD-33000-001
 - MATERIAL: ASTM B422, UNS C19025, HR04
THICKNESS: 0.30 mm ± 0.01
TEMPER: FULL HARD (REF)
TENSILE: 496 MIN MPA
PLATING: SEE PLATING NOTES ABOVE
 - MEETS PERFORMANCE SPECIFICATION FOR CABLE TO TERMINAL ELECTRICAL CRIMPS PER SAE/USCAR-21 (8/2001)
 - MEETS PERFORMANCE STANDARD FOR AUTOMOTIVE ELECTRICAL CONNECTOR SYSTEMS FOR SAE/USCAR-2, REV. 4 (TEMP CLASS 3) (4/2001)
 - MEETS ELECTRICAL CONNECTION SYSTEM DESIGN SPECIFICATION (SDS) REV.11 (5/2002)
 - MEETS FIELD CORRELATED LIFE TEST (FCLT) PER SAE/USCAR-20 (11/2001)
 - MEETS WIRING COMPONENT DESIGN GUIDELINES SAE/USCAR-12 REV 2 (12/2001)
 - TSC ON A DIMENSION TO BE INTERPRETED AS DISTANCE TO A THEORETICAL SHARP CORNER AS IF THE RADIUS WERE NOT PRESENT
 - DRAWING CONFORMS TO AVP-(I401/T406)-001 REVISION A DATED 2/16/99
 - REFERENCE 97B5-14474-AAB FOR LARGE POLARIZATION RIB CAVITY SPECIFICATION
 - INSERTION FORCE (TIN) AVG. FROM PV TESTING =
3.8N LARGE POLARIZATION RIB
3.5N SMALL POLARIZATION RIB (REFERENCE)
 - ALL DIMENSIONS EXCEPT (1), (2), (3) & (4) ARE COMMON TO BOTH SMALL AND LARGE POLARIZATION RIB TERMINALS
 - REFERENCE PK-31300-516 FOR REEL DIRECTION
 - REFERENCE CS-33012-002 FOR ADDITIONAL CRIMP INFORMATION

ENTER DESCRIPTION EC NO: UAU2010-0107 DRAWN BY: DRWINKFERGUSON CHKD BY: DHIR APPR: BMOSER 2009/08/19 2009/08/20	QUALITY SYMBOLS ▽=0 ▽=0	GENERAL TOLERANCES (UNLESS SPECIFIED)		DIMENSION STYLE MM ONLY		SCALE 2:1	DESIGN UNITS METRIC	THIRD ANGLE PROJECTION	
		mm	INCH	DRAWN BY L. PULLIAM	DATE 2005/06/21	TITLE MX150 RECEPTACLE TERMINAL			
B1	REV	4 PLACES	± .005	± .005	CHECKED BY A. DHIR	DATE 2005/06/21	MOLEX INCORPORATED		
		3 PLACES	± 0.10	± 0.10	APPROVED BY B. MOSER	DATE 2005/06/22			
		2 PLACES	± 0.3	± 0.3	MATERIAL NO. SEE TABLE		DOCUMENT NO. SD-33012-002	SHEET NO. 1 OF 5	
		1 PLACE	± 3°	± 3°	THIS DRAWING CONTAINS INFORMATION THAT IS PROPRIETARY TO MOLEX INCORPORATED AND SHOULD NOT BE USED WITHOUT WRITTEN PERMISSION				

TABLE 1 - TERMINAL CRIMP DIM. REFERENCE TABLE

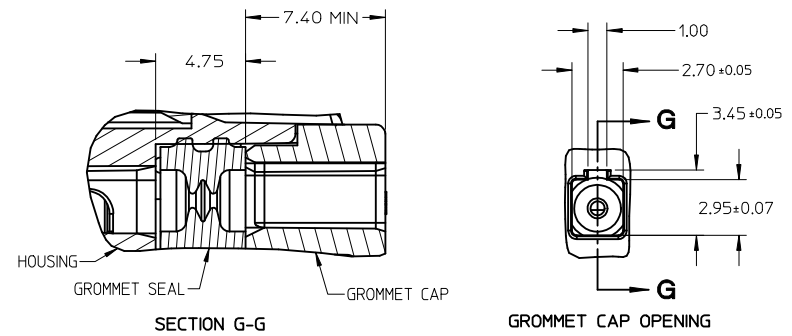
J	SMALL POLARIZATION RIB		PLATING	WIRE SIZE (awg)	WIRE SPECIFICATION	CONDUCTOR CH (SEC Z-Z) ±0.05 mm	CONDUCTOR CW (SEC Z-Z) ±0.10 mm	INSULATOR IH (SEC Y-Y) ±0.10 mm	INSULATOR IW (SEC Y-Y) ±0.10 mm	WIRE PULL FORCE (N)	
	RIGHT PAYOFF	LEFT PAYOFF									
I	33012-2001	33012-3001	7C3T-14474-EA	TIN	14	MIL-123A	1.65	2.45	2.90	2.75	268
					MIL-135A1	1.65	2.45	2.70	2.60	268	
					MIL-123A	1.35	2.45	2.40	2.60	222	
					MIL-123A	1.25	2.15	2.00	2.30	157	
					SAE J1128 (IGXL)	1.25	2.15	2.40	2.60	158	
					MIL-123A	1.15	2.15	1.90	2.10	128	
	33012-2002	33012-3002	7C3T-14474-DA	TIN	18	MIL-123A	1.15	2.15	1.90	2.10	128
					HIFLON WIRE ¹	1.15	2.15	1.90	2.10	135	
					SAE J1128 (IGXL)	1.15	2.15	2.00	2.30	105	
					MIL-123A	1.00	1.60	1.85	1.90	88	
					JASO D 611 (AVSSI)	1.60	2.45	2.90	2.75	231	
					MIL-126A1	1.40	2.45	2.60	2.60	257	
H	33012-2001	33012-3001	7C3T-14474-EA	TIN	150mm ²	MIL-126A1	1.30	2.15	2.00	2.30	211
					100mm ²	MIL-126A1	1.30	2.15	2.00	2.30	211
					0.75mm ²	MIL-126A1	1.25	2.15	1.95	2.10	142
					MIL-126A1	1.10	1.60	1.80	1.90	111	
					0.50mm ²	JASO D 611 (AVSSI)	1.10	1.60	1.85	1.90	125
					0.35mm ²	WSK-1A348-A2	0.95	1.60	1.70	1.90	50
	33012-2003	33012-3003	7C3T-14474-CA	TIN	22	MIL-123A	1.00	1.60	1.85	1.90	88
					MIL-123A	1.00	1.60	1.85	1.90	88	
					JASO D 611 (AVSSI)	1.60	2.45	2.90	2.75	231	
					MIL-126A1	1.40	2.45	2.60	2.60	257	
					MIL-126A1	1.30	2.15	2.00	2.30	211	
					100mm ²	MIL-126A1	1.30	2.15	2.00	2.30	211
G	33001-2003	33001-3003	7C3T-14474-HA	GOLD	14	MIL-123A	1.65	2.45	2.90	2.75	268
					MIL-135A1	1.65	2.45	2.70	2.60	268	
					MIL-123A	1.35	2.45	2.40	2.60	222	
					MIL-123A	1.25	2.15	2.00	2.30	157	
					SAE J1128 (IGXL)	1.25	2.15	2.40	2.60	158	
					MIL-123A	1.15	2.15	1.90	2.10	128	
	33001-2004	33001-3004	7C3T-14474-GA	GOLD	20	HIFLON WIRE ¹	1.15	2.15	1.90	2.10	135
					SAE J1128 (IGXL)	1.15	2.15	2.00	2.30	105	
					MIL-123A	1.00	1.60	1.85	1.90	88	
					JASO D 611 (AVSSI)	1.60	2.45	2.90	2.75	231	
					MIL-126A1	1.40	2.45	2.60	2.60	257	
					100mm ²	MIL-126A1	1.30	2.15	2.00	2.30	211
F	33001-2005	33001-3005	7C3T-14474-FA	GOLD	0.75mm ²	MIL-126A1	1.25	2.15	1.95	2.10	142
					MIL-126A1	1.10	1.60	1.80	1.90	111	
					0.50mm ²	JASO D 611 (AVSSI)	1.10	1.60	1.85	1.90	125
					0.35mm ²	WSK-1A348-A2	0.95	1.60	1.70	1.90	50
					MIL-123A	1.65	2.45	2.90	2.75	268	
					MIL-135A1	1.65	2.45	2.70	2.60	268	
	33001-4001	33001-5001	7U5T-14474-UA	SILVER**	14	MIL-123A	1.35	2.45	2.40	2.60	222
					MIL-123A	1.25	2.15	2.00	2.30	157	
					SAE J1128 (IGXL)	1.25	2.15	2.40	2.60	158	
					MIL-123A	1.15	2.15	1.90	2.10	128	
					HIFLON WIRE ¹	1.15	2.15	1.90	2.10	135	
					SAE J1128 (IGXL)	1.15	2.15	2.00	2.30	105	
E	33001-4002	33001-5002	7U5T-14474-TA	SILVER**	20	MIL-123A	1.00	1.60	1.85	1.90	88
					MIL-123A	1.00	1.60	1.85	1.90	88	
					JASO D 611 (AVSSI)	1.60	2.45	2.90	2.75	231	
					MIL-126A1	1.40	2.45	2.60	2.60	257	
					100mm ²	MIL-126A1	1.30	2.15	2.00	2.30	211
					0.75mm ²	MIL-126A1	1.25	2.15	1.95	2.10	142
	33001-4003	33001-5003	7U5T-14474-SA	SILVER**	0.50mm ²	MIL-126A1	1.10	1.60	1.80	1.90	111
					JASO D 611 (AVSSI)	1.10	1.60	1.85	1.90	125	
					0.35mm ²	WSK-1A348-A2	0.95	1.60	1.70	1.90	50
					MIL-123A	1.65	2.45	2.90	2.75	268	
					MIL-135A1	1.65	2.45	2.70	2.60	268	
					MIL-123A	1.35	2.45	2.40	2.60	222	
D	33012-2021	33012-3021	7C3T-14474-LA	TIN	14	MIL-123A	1.65	2.45	2.90	2.75	268
					MIL-135A1	1.65	2.45	2.70	2.60	268	
					MIL-123A	1.35	2.45	2.40	2.60	222	
					MIL-123A	1.25	2.15	2.00	2.30	157	
					SAE J1128 (IGXL)	1.25	2.15	2.40	2.60	158	
					MIL-123A	1.15	2.15	1.90	2.10	128	
	33012-2022	33012-3022	7C3T-14474-KA	TIN	20	HIFLON WIRE ¹	1.15	2.15	1.90	2.10	135
					SAE J1128 (IGXL)	1.15	2.15	2.00	2.30	105	
					MIL-123A	1.00	1.60	1.85	1.90	88	
					JASO D 611 (AVSSI)	1.60	2.45	2.90	2.75	231	
					150mm ²	MIL-126A1	1.40	2.45	2.60	2.60	257
					100mm ²	MIL-126A1	1.30	2.15	2.00	2.30	211
C	33012-2023	33012-3023	7C3T-14474-JA	TIN	0.75mm ²	MIL-126A1	1.25	2.15	1.95	2.10	142
					MIL-126A1	1.10	1.60	1.80	1.90	111	
					0.50mm ²	JASO D 611 (AVSSI)	1.10	1.60	1.85	1.90	125
					0.35mm ²	WSK-1A348-A2	0.95	1.60	1.70	1.90	50
					MIL-123A	1.65	2.45	2.90	2.75	268	
					MIL-135A1	1.65	2.45	2.70	2.60	268	
	33001-2021	33001-3021	7C3T-14474-PA	GOLD	16	MIL-123A	1.35	2.45	2.40	2.60	222
					MIL-123A	1.25	2.15	2.00	2.30	157	
					SAE J1128 (IGXL)	1.25	2.15	2.40	2.60	158	
					MIL-123A	1.15	2.15	1.90	2.10	128	
					HIFLON WIRE ¹	1.15	2.15	1.90	2.10	135	
					SAE J1128 (IGXL)	1.15	2.15	2.00	2.30	105	
B	33001-2022	33001-3022	7C3T-14474-MA	GOLD	22	MIL-123A	1.00	1.60	1.85	1.90	88
					MIL-123A	1.00	1.60	1.85	1.90	88	
					JASO D 611 (AVSSI)	1.60	2.45	2.90	2.75	231	
					150mm ²	MIL-126A1	1.40	2.45	2.60	2.60	257
					100mm ²	MIL-126A1	1.30	2.15	2.00	2.30	211
					0.75mm ²	MIL-126A1	1.25	2.15	1.95	2.10	142
	33001-2023	33001-3023	7C3T-14474-NA	GOLD	0.50mm ²	MIL-126A1	1.10	1.60	1.80	1.90	111
					JASO D 611 (AVSSI)	1.10	1.60	1.85	1.90	125	
					0.35mm ²	WSK-1A348-A2	0.95	1.60	1.70	1.90	50
					MIL-123A	1.65	2.45	2.90	2.75	268	
					MIL-135A1	1.65	2.45	2.70	2.60	268	
					MIL-123A	1.35	2.45	2.40	2.60	222	
A	33001-4021	33001-5021	7U5T-14474-RA	SILVER**	18	MIL-123A	1.25	2.15	2.00	2.30	157
					SAE J1128 (IGXL)	1.25	2.15	2.40	2.60	158	
					MIL-123A	1.15	2.15	1.90	2.10	128	
					HIFLON WIRE ¹	1.15	2.15	1.90	2.10	135	
					SAE J1128 (IGXL)	1.15	2.15	2.00	2.30	105	
					MIL-123A	1.00	1.60	1.85	1.90	88	
	33001-4022	33001-5022	7U5T-14474-PA	SILVER**	20	HIFLON WIRE ¹	1.15	2.15	1.90	2.10	135
					SAE J1128 (IGXL)	1.15	2.15	2.00	2.30	105	
					MIL-123A	1.00	1.60	1.85	1.90	88	
					JASO D 611 (AVSSI)	1.60	2.45	2.90	2.75	231	
					150mm ²	MIL-126A1	1.40	2.45	2.60	2.60	257
					100mm ²	MIL-126A1	1.30	2.15	2.00	2.30	211
33001-4023	33001-5023	7U5T-14474-NA	SILVER**	0.75mm ²	MIL-126A1	1.25	2.15	1.95	2.10	142	
				MIL-126A1	1.10	1.60	1.80	1.90	111		
				0.50mm ²	JASO D 611 (AVSSI)	1.10	1.60	1.85	1.90	125	
				0.35mm ²	WSK-1A348-A2	0.95	1.60	1.70	1.90	50	
				MIL-123A	1.65	2.45	2.90	2.75	268		
				MIL-135A1	1.65	2.45	2.70	2.60	268		

LARGE POLARIZATION RIB											
RIGHT PAYOFF	LEFT PAYOFF										
33001-4023	33001-5023	7U5T-14474-NA	SILVER**	0.50mm ²	MIL-126A1	JASO D 611 (AVSSI)	1.10	1.60	1.80	1.90	111
33001-4023*	33001-5023*	7U5T-14474-NA*	SILVER**	0.35mm ²	WSK-1A348-A2		0.95	1.60	1.70	1.90	50

¹HIFLON WIRE:
CORE WIRE: STAINLESS STEEL, SUS #0.14, 7 STRANDS
SURROUNDING WIRE: NICKEL (Ni) PLATED COPPER (Cu) #0.14, 30 STRANDS
INSULATOR: PTFE

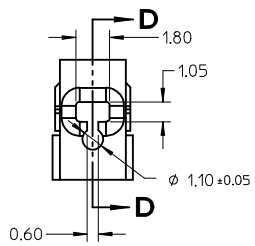
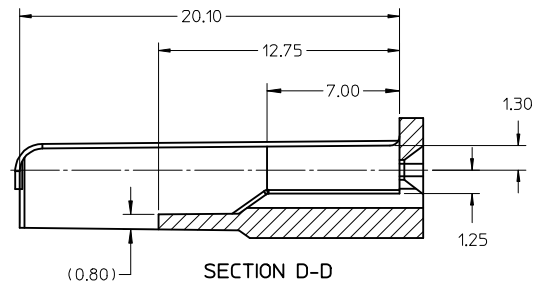
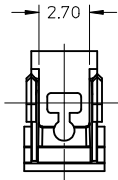
* 0.35mm² WIRE MUST NOT BE USED IN MX150 SEALED CONNECTOR SYSTEMS

** SILVER PLATED TERMINALS NOT TO BE USED IN CONNECTOR SYSTEMS WITH CIRCUIT COUNTS HIGHER THAN 8 DUE TO HIGHER CONNECTOR MATE/UNMATE FORCE

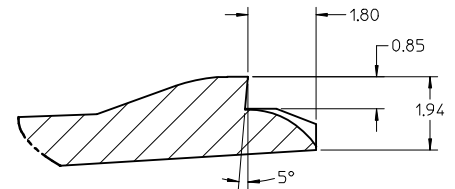
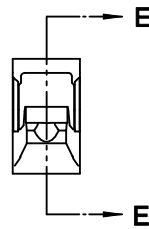
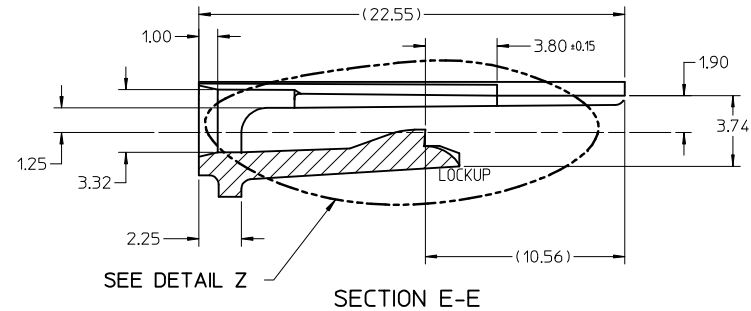
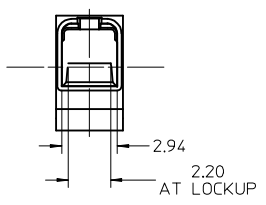


GROMMET SEAL / CAP CONFIGURATION TO MODIFY LARGE POLARIZATION RIB CAVITY TO ACCEPT SMALL POLARIZATION RIB APPLICATIONS

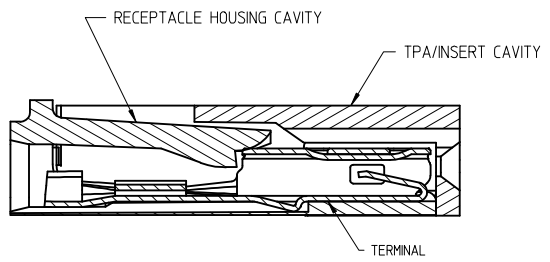
ENTER DESCRIPTION EC NO: UAU2010-0107 DRINKWATERGUSON 2009/08/18 CHKDA-DHIR 2009/08/19 APPR:BMOSER 2009/08/20 B1	QUALITY SYMBOLS ▽=0 ▽=0	GENERAL TOLERANCES (UNLESS SPECIFIED)		DIMENSION STYLE MM ONLY		SCALE	DESIGN UNITS	THIRD ANGLE PROJECTION			
		4 PLACES ± --- INCH 3 PLACES ± 0.005 ± --- 2 PLACES ± 0.10 ± --- 1 PLACE ± 0.3 ± ---		DRAWN BY DATE L. PULLIAM 2005/06/21		TITLE	METRIC	MX150 RECEPTACLE TERMINAL			
		ANGULAR ± 3°		CHECKED BY DATE A. DHIR 2005/06/21		APPROVED BY DATE B. MOSER 2005/06/22		MOLEX INCORPORATED			
		MATERIAL NO. SEE TABLE		DOCUMENT NO. SD-33012-002		SHEET NO. 2 OF 5		THIS DRAWING CONTAINS INFORMATION THAT IS PROPRIETARY TO MOLEX INCORPORATED AND SHOULD NOT BE USED WITHOUT WRITTEN PERMISSION			



- NOTES: UNLESS OTHERWISE SPECIFIED
1. TOLERANCES: LINEAR ± 0.10
ANGULAR $\pm 3^\circ$
 2. ALL DRAFT WITHIN TOLERANCE.
 3. MAX RADII ON ALL CORNERS SHOWN SHARP: 0.10
 4. MAX FLASH PERMISSIBLE: 0.1
 5. EJECTOR PIN MARKS PERMISSIBLE IF FLUSH TO 0.25 BELOW SURFACE.
 6. MATERIAL: HOUSING/FINGER SPECIFICATION ENGINEERED FOR MATERIAL WITH THE FOLLOWING PROPERTIES:
A. FLEXURAL MODULUS = 4,500 TO 9,400 MPa
PER ASTM TEST D790
B. ELONGATION AT YIELD = 2.3% OR BETTER
PER ASTM TEST D638 TYPE V
 7. CAVITY SPEC FOR USE ONLY WITH MOLEX RECEPTACLE TERMINAL PART NUMBERS SPECIFIED ELSEWHERE ON THIS DRAWING

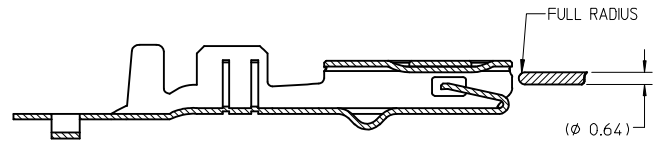
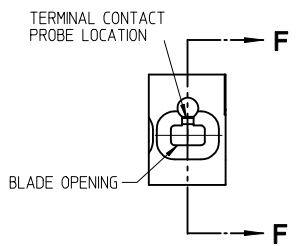


DETAIL Z
SCALE 20:1



SECTION F-F

RECEPTACLE CAVITY ASSEMBLED VIEWS
FOR SMALL POLARIZATION RIB APPLICATIONS
FIG. 1



SECTION D-D
FOR LARGE POLARIZATION RIB APPLICATIONS
FIG. 2

PROBING DOWN THE THROAT MUST USE THIS TERMINAL PROBE

PROBE PIN DETAILS:
MANUFACTURER: LONE STAR INDUSTRIAL
PART NUMBER: LS054R-403-N-4.6
PIN DIAMETER: 0.025 IN (0.64mm)
TIP SHAPE: SPHERICAL
TEL: 915-779-7255

PREFERRED PROBING LOCATION IS NOT ON SPRING MEMBER

IF ELECTRICAL CONTINUITY PROBE TOUCHES SPRING MEMBER USE PROBING AS SHOWN IN FIG. 2

REV	DESCRIPTION	DATE	BY
B1	ENTER DESCRIPTION	2009/08/18	DRWIN:KEERGUSON
	EC NO: UAU2010-0107	2009/08/19	CHKD:A.DHIR
	APPR:BMOSER	2009/08/20	

QUALITY SYMBOLS	GENERAL TOLERANCES (UNLESS SPECIFIED)
▽=0	mm
▽=0	INCH
	4 PLACES ± --- ± ---
	3 PLACES ± 0.005 ± ---
	2 PLACES ± 0.10 ± ---
	1 PLACE ± 0.3 ± ---
	ANGULAR ± 3 °

DIMENSION STYLE		SCALE	DESIGN UNITS	THIRD ANGLE PROJECTION
MM ONLY		5:1	METRIC	☉
DRAWN BY	DATE	TITLE		
L. PULLIAM	2005/06/21	MX150 RECEPTACLE TERMINAL		
CHECKED BY	DATE	MOLEX INCORPORATED		
A. DHIR	2005/06/21	MATERIAL NO. SEE TABLE		
APPROVED BY	DATE	DOCUMENT NO. SD-33012-002		
B. MOSER	2005/06/22	SHEET NO. 4 OF 5		

THIS DRAWING CONTAINS INFORMATION THAT IS PROPRIETARY TO MOLEX INCORPORATED AND SHOULD NOT BE USED WITHOUT WRITTEN PERMISSION

TABLE 2 - TERMINAL GRIP/CRIMP TOOL DIM. REFERENCE TABLE

J	SUPPLIER PART NO.	FORD PART NO.	PLATING (STAMPING)	WIRE APPLICATION		WIRE SPECIFICATION																		
				SAE	METRIC	A±0.30	B±0.30	C±0.30	D±0.30	E±0.005	F±0.005	G±0.005	J±0.005	K±0.005	M±0.005	N±0.005	P±0.005	R±0.005	U±0.005	V±0.005				
SMALL POLARIZATION RIB																								
RIGHT PAYOFF		LEFT PAYOFF																						
33012-2001	33012-3001	7C3T-1474-EA	TIN	14	2.0	MIL-123A JASO D 611 (AVSS)	3.9	4.4	1.7	1.6	12.82	0.6	1.19	7.05	13.12	1.35	6.91	2.44	6.11	2.72	1.40			
				14	-	MIL-135A1	3.9	4.4	1.7	1.6	12.82	0.6	1.19	7.05	12.96	1.28	6.51	2.44	6.11	2.52	1.30			
33012-2002	33012-3002	7C3T-1474-DA	TIN	16	1.5	MIL-123A/MIL-126A1	3.9	4.4	1.7	1.6	12.82	0.6	1.19	7.05	12.96	1.28	6.51	2.44	6.11	2.52	1.30			
				18	1.0	MIL-123A/MIL-126A1	3.3	3.1	1.3	1.4	12.46	0.57	0.99	6.52	12.65	1.13	6.46	2.14	1.93	2.23	1.15			
				18	-	SAE J1128 (IGXL)	3.3	3.1	1.3	1.4	12.46	0.57	0.99	6.52	12.96	1.28	6.51	2.14	1.93	2.52	1.30			
				20	0.75	MIL-123A/MIL-126A1	3.3	3.1	1.3	1.4	12.46	0.57	0.99	6.52	12.42	1.03	6.36	2.14	1.93	2.04	1.05			
33012-2003	33012-3003	7C3T-1474-CA	TIN	22	-	SAE J1128 (IGXL)	3.3	3.1	1.3	1.4	12.46	0.57	0.99	6.52	12.65	1.13	6.46	2.14	1.93	2.23	1.15			
				20	0.5	MIL-123A/MIL-126A1 JASO D 611 (AVSS)	2.5	2.6	0.9	1.0	11.97	0.42	0.72	6.57	12.24	0.93	6.31	1.60	1.44	1.84	0.95			
33012-2003*	33012-3003*	7C3T-1474-CA*	TIN	-	0.35	WSK-1A348-A2	2.5	2.6	0.9	1.0	11.97	0.42	0.72	6.57	12.24	0.93	6.31	1.60	1.44	1.84	0.95			
				14	2.0	MIL-123A JASO D 611 (AVSS)	3.9	4.4	1.7	1.6	12.82	0.6	1.19	7.05	13.12	1.35	6.91	2.44	6.11	2.72	1.40			
33001-2003	33001-3003	7C3T-1474-HA	GOLD	14	-	MIL-135A1	3.9	4.4	1.7	1.6	12.82	0.6	1.19	7.05	12.96	1.28	6.51	2.44	6.11	2.52	1.30			
				16	1.5	MIL-123A/MIL-126A1	3.9	4.4	1.7	1.6	12.82	0.6	1.19	7.05	12.96	1.28	6.51	2.44	6.11	2.52	1.30			
				18	1.0	MIL-123A/MIL-126A1	3.3	3.1	1.3	1.4	12.46	0.57	0.99	6.52	12.65	1.13	6.46	2.14	1.93	2.23	1.15			
				18	-	SAE J1128 (IGXL)	3.3	3.1	1.3	1.4	12.46	0.57	0.99	6.52	12.96	1.28	6.51	2.14	1.93	2.52	1.30			
33001-2004	33001-3004	7C3T-1474-GA	GOLD	20	0.75	MIL-123A/MIL-126A1	3.3	3.1	1.3	1.4	12.46	0.57	0.99	6.52	12.42	1.03	6.36	2.14	1.93	2.04	1.05			
				20	-	SAE J1128 (IGXL)	3.3	3.1	1.3	1.4	12.46	0.57	0.99	6.52	12.65	1.13	6.46	2.14	1.93	2.23	1.15			
33001-2005	33001-3005	7C3T-1474-FA	GOLD	22	0.5	MIL-123A/MIL-126A1 JASO D 611 (AVSS)	2.5	2.6	0.9	1.0	11.97	0.42	0.72	6.57	12.24	0.93	6.31	1.60	1.44	1.84	0.95			
				-	0.35	WSK-1A348-A2	2.5	2.6	0.9	1.0	11.97	0.42	0.72	6.57	12.24	0.93	6.31	1.60	1.44	1.84	0.95			
33001-4001	33001-5001	7U5T-1474-UA	SILVER	14	2.0	MIL-123A JASO D 611 (AVSS)	3.9	4.4	1.7	1.6	12.82	0.6	1.19	7.05	13.12	1.35	6.91	2.44	6.11	2.72	1.40			
				14	-	MIL-135A1	3.9	4.4	1.7	1.6	12.82	0.6	1.19	7.05	12.96	1.28	6.51	2.44	6.11	2.52	1.30			
				16	1.5	MIL-123A/MIL-126A1	3.9	4.4	1.7	1.6	12.82	0.6	1.19	7.05	12.96	1.28	6.51	2.44	6.11	2.52	1.30			
				18	1.0	MIL-123A/MIL-126A1	3.3	3.1	1.3	1.4	12.46	0.57	0.99	6.52	12.65	1.13	6.46	2.14	1.93	2.23	1.15			
33001-4002	33001-5002	7U5T-1474-TA	SILVER	18	-	SAE J1128 (IGXL)	3.3	3.1	1.3	1.4	12.46	0.57	0.99	6.52	12.96	1.28	6.51	2.14	1.93	2.52	1.30			
				20	0.75	MIL-123A/MIL-126A1	3.3	3.1	1.3	1.4	12.46	0.57	0.99	6.52	12.42	1.03	6.36	2.14	1.93	2.04	1.05			
				20	-	SAE J1128 (IGXL)	3.3	3.1	1.3	1.4	12.46	0.57	0.99	6.52	12.65	1.13	6.46	2.14	1.93	2.23	1.15			
				22	0.5	MIL-123A/MIL-126A1 JASO D 611 (AVSS)	2.5	2.6	0.9	1.0	11.97	0.42	0.72	6.57	12.24	0.93	6.31	1.60	1.44	1.84	0.95			
33001-4003*	33001-5003*	7U5T-1474-SA*	SILVER	-	0.35	WSK-1A348-A2	2.5	2.6	0.9	1.0	11.97	0.42	0.72	6.57	12.24	0.93	6.31	1.60	1.44	1.84	0.95			
				LARGE POLARIZATION RIB																				
33012-2021	33012-3021	7C3T-1474-LA	TIN	14	2.0	MIL-123A JASO D 611 (AVSS)	3.9	4.4	1.7	1.6	12.82	0.6	1.19	7.05	13.12	1.35	6.91	2.44	6.11	2.72	1.40			
				14	-	MIL-135A1	3.9	4.4	1.7	1.6	12.82	0.6	1.19	7.05	12.96	1.28	6.51	2.44	6.11	2.52	1.30			
				16	1.5	MIL-123A/MIL-126A1	3.9	4.4	1.7	1.6	12.82	0.6	1.19	7.05	12.96	1.28	6.51	2.44	6.11	2.52	1.30			
				18	1.0	MIL-123A/MIL-126A1	3.3	3.1	1.3	1.4	12.46	0.57	0.99	6.52	12.65	1.13	6.46	2.14	1.93	2.23	1.15			
33012-2022	33012-3022	7C3T-1474-KA	TIN	18	-	SAE J1128 (IGXL)	3.3	3.1	1.3	1.4	12.46	0.57	0.99	6.52	12.96	1.28	6.51	2.14	1.93	2.52	1.30			
				20	0.75	MIL-123A/MIL-126A1	3.3	3.1	1.3	1.4	12.46	0.57	0.99	6.52	12.42	1.03	6.36	2.14	1.93	2.04	1.05			
				20	-	SAE J1128 (IGXL)	3.3	3.1	1.3	1.4	12.46	0.57	0.99	6.52	12.65	1.13	6.46	2.14	1.93	2.23	1.15			
				22	0.5	MIL-123A/MIL-126A1 JASO D 611 (AVSS)	2.5	2.6	0.9	1.0	11.97	0.42	0.72	6.57	12.24	0.93	6.31	1.60	1.44	1.84	0.95			
33012-2023*	33012-3023*	7C3T-1474-JA*	TIN	-	0.35	WSK-1A348-A2	2.5	2.6	0.9	1.0	11.97	0.42	0.72	6.57	12.24	0.93	6.31	1.60	1.44	1.84	0.95			
				14	2.0	MIL-123A JASO D 611 (AVSS)	3.9	4.4	1.7	1.6	12.82	0.6	1.19	7.05	13.12	1.35	6.91	2.44	6.11	2.72	1.40			
33001-2021	33001-3021	7C3T-1474-PA	GOLD	14	-	MIL-135A1	3.9	4.4	1.7	1.6	12.82	0.6	1.19	7.05	12.96	1.28	6.51	2.44	6.11	2.52	1.30			
				16	1.5	MIL-123A/MIL-126A1	3.9	4.4	1.7	1.6	12.82	0.6	1.19	7.05	12.96	1.28	6.51	2.44	6.11	2.52	1.30			
				18	1.0	MIL-123A/MIL-126A1	3.3	3.1	1.3	1.4	12.46	0.57	0.99	6.52	12.65	1.13	6.46	2.14	1.93	2.23	1.15			
				18	-	SAE J1128 (IGXL)	3.3	3.1	1.3	1.4	12.46	0.57	0.99	6.52	12.96	1.28	6.51	2.14	1.93	2.52	1.30			
33001-2022	33001-3022	7C3T-1474-NA	GOLD	20	0.75	MIL-123A/MIL-126A1	3.3	3.1	1.3	1.4	12.46	0.57	0.99	6.52	12.42	1.03	6.36	2.14	1.93	2.04	1.05			
				20	-	SAE J1128 (IGXL)	3.3	3.1	1.3	1.4	12.46	0.57	0.99	6.52	12.65	1.13	6.46	2.14	1.93	2.23	1.15			
33001-2023	33001-3023	7C3T-1474-MA	GOLD	22	0.5	MIL-123A/MIL-126A1 JASO D 611 (AVSS)	2.5	2.6	0.9	1.0	11.97	0.42	0.72	6.57	12.24	0.93	6.31	1.60	1.44	1.84	0.95			
				-	0.35	WSK-1A348-A2	2.5	2.6	0.9	1.0	11.97	0.42	0.72	6.57	12.24	0.93	6.31	1.60	1.44	1.84	0.95			
33001-4021	33001-5021	7U5T-1474-RA	SILVER	14	2.0	MIL-123A JASO D 611 (AVSS)	3.9	4.4	1.7	1.6	12.82	0.6	1.19	7.05	13.12	1.35	6.91	2.44	6.11	2.72	1.40			
				14	-	MIL-135A1	3.9	4.4	1.7	1.6	12.82	0.6	1.19	7.05	12.96	1.28	6.51	2.44	6.11	2.52	1.30			
				16	1.5	MIL-123A/MIL-126A1	3.9	4.4	1.7	1.6	12.82	0.6	1.19	7.05	12.96	1.28	6.51	2.44	6.11	2.52	1.30			
				18	1.0	MIL-123A/MIL-126A1	3.3	3.1	1.3	1.4	12.46	0.57	0.99	6.52	12.65	1.13	6.46	2.14	1.93	2.23	1.15			
33001-4022	33001-5022	7U5T-1474-PA	SILVER	18	-	SAE J1128 (IGXL)	3.3	3.1	1.3	1.4	12.46	0.57	0.99	6.52	12.96	1.28	6.51	2.14	1.93	2.52	1.30			
				20	0.75	MIL-123A/MIL-126A1	3.3	3.1	1.3	1.4	12.46	0.57	0.99	6.52	12.42	1.03	6.36	2.14	1.93	2.04	1.05			
				20	-	SAE J1128 (IGXL)	3.3	3.1	1.3	1.4	12.46	0.57	0.99	6.52	12.65	1.13	6.46	2.14	1.93	2.23	1.15			
				22	0.5	MIL-123A/MIL-126A1 JASO D 611 (AVSS)	2.5	2.6	0.9	1.0	11.97	0.42	0.72	6.57	12.24	0.93	6.31	1.60	1.44	1.84	0.95			
33001-4023*	33001-5023*	7U5T-1474-NA*	SILVER	-	0.35	WSK-1A348-A2	2.5	2.6	0.9	1.0	11.97	0.42	0.72	6.57	12.24	0.93	6.31	1.60	1.44	1.84	0.95			

* 0.35mm² WIRE MUST NOT BE USED IN MX150 SEALED CONNECTOR SYSTEMS

ENTER DESCRIPTION EC NO: UAU2010-0107 DRANKFERGUSON 2009/08/18 CHKD-A: DHR 2009/08/19 APPR: BMOSE 2009/08/20 REV:	QUALITY SYMBOLS	GENERAL TOLERANCES (UNLESS SPECIFIED) mm INCH 4 PLACES ± --- ± --- 3 PLACES ± 0.005 ± --- 2 PLACES ± 0.10 ± --- 1 PLACE ± 0.3 ± --- ANGULAR ± 3°
--	-----------------	--