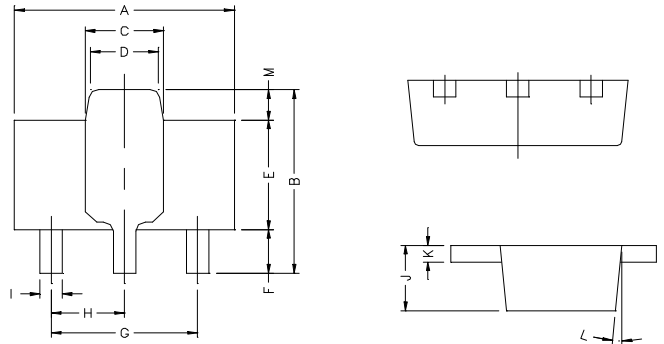


RoHS Compliant Product

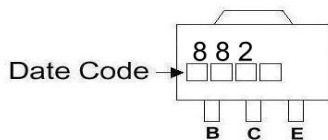
SOT-89

**Description**

The BCP882 is suited for the output stage of 1.5W audio, voltage regulator, and relay driver.



**Marking :**



REF.	Millimeter		REF.	Millimeter	
	Min.	Max.		Min.	Max.
A	4.4	4.6	G	3.00	REF.
B	4.05	4.25	H	1.50	REF.
C	1.50	1.70	I	0.40	0.52
D	1.30	1.50	J	1.40	1.60
E	2.40	2.60	K	0.35	0.41
F	0.89	1.20	L	5° TYP.	
			M	0.70 REF.	

**Absolute Maximum Ratings at TA=25°C**

Symbol	Parameter	Value	Units
V <sub>CBO</sub>	Collector-Base Voltage	40	V
V <sub>CEO</sub>	Collector-Emitter Voltage	30	V
V <sub>EBO</sub>	Emitter-Base Voltage	5	V
I <sub>C</sub>	Collector Current	3	A
P <sub>D</sub>	Total Power Dissipation	1.2	W
T <sub>J</sub> , T <sub>stg</sub>	Junction and Storage Temperature	-55~+150	°C

**ELECTRICAL CHARACTERISTICS Tamb=25°C unless otherwise specified**

Parameter	Symbol	Min	Typ.	Max	Unit	Test Conditions
Collector-Base Breakdown Voltage	BV <sub>CBO</sub>	40	-	-	V	I <sub>C</sub> =100μA, I <sub>E</sub> =0
Collector-Emitter Breakdown Voltage	BV <sub>CEO</sub>	30	-	-	V	I <sub>C</sub> = 1mA, I <sub>B</sub> =0
Emitter-Base Breakdown Voltage	BV <sub>EBO</sub>	5	-	-	V	I <sub>E</sub> = 10μA
Collector-Base Cutoff Current	I <sub>CBO</sub>	-	-	1	uA	V <sub>CB</sub> = 30V
Emitter-Base Cutoff Current	I <sub>EBO</sub>	-	-	1	uA	V <sub>EB</sub> =3V
Collector Saturation Voltage	V <sub>CE(sat)</sub>	-	-	0.5	V	I <sub>C</sub> =2A, I <sub>B</sub> =0.2A
Base-Emitter Saturation Voltage	V <sub>BE(sat)</sub>	-	-	2	V	I <sub>C</sub> =2A, I <sub>B</sub> =0.2A
DC Current Gain	h <sub>FE1</sub>	30	-	-		V <sub>CE</sub> = 2V, I <sub>C</sub> =20mA
	h <sub>FE2</sub>	100	-	500		V <sub>CE</sub> = 2V, I <sub>C</sub> =1A
Gain-Bandwidth Product	f <sub>T</sub>	-	90	-	MHz	V <sub>CE</sub> = 5V, I <sub>C</sub> = 0.1A, f=100MHz
Output Capacitance	C <sub>ob</sub>	-	45	-	pF	V <sub>CB</sub> =10V, f=1MHz, I <sub>E</sub> =0

**Classification of hFE**

Rank	Q	P	E
Range	100~200	160~320	250~500

**Characteristics Curve**

