

Features

- Lead free
- RoHS compliant*
- Increased lead density
- Custom circuits available per factory

For information on thin film applications, download Bourns' Thin Film Application Note.

4400T - Thin Film Wide Body Gull Wing

Product Characteristics

Resistance Range10 to 150K ohms
 Resistance Tolerance
±0.1 %, ±0.5 %, ±1 %
 Temperature Coefficient
±100 ppm/°C, ±50 ppm/°C,
 ±25 ppm/°C
 Temperature Range
-55 °C to +125 °C
 Insulation Resistance
10,000 megohms minimum
 TCR Tracking±5 ppm/°C
 Maximum Operating Voltage.....50 V

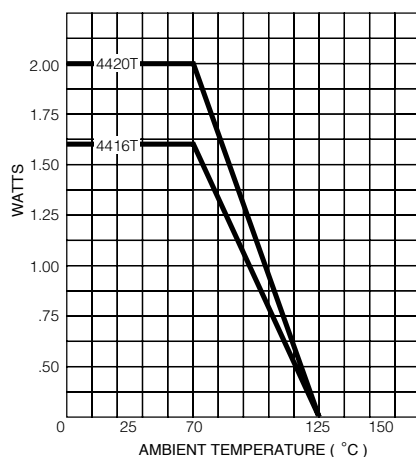
Environmental Characteristics

TESTS PER MIL-STD-202ΔR MAX
 Thermal Shock 0.1 %
 Short Time Overload 0.1 %
 Resistance to Soldering Heat 0.1 %
 Moisture Resistance 0.5 %
 Life 0.5 %

Physical Characteristics

Lead Frame Material
Copper, solder coated
 Body Material Flammability
Conforms to UL94V-0
 Body MaterialNovolac Epoxy

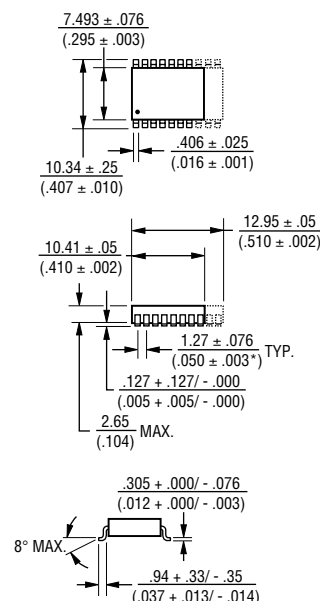
Package Power Temp. Derating Curve



Package Power Ratings at 70 °C

4416T1.60 watts
 4420T2.00 watts

Product Dimensions

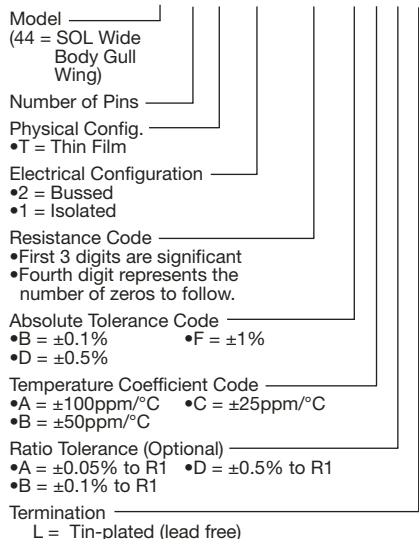


Governing dimensions are in metric. Dimensions in parentheses are inches and are approximate.

*Terminal centerline to centerline measurements made at point of emergence of the lead from the body.

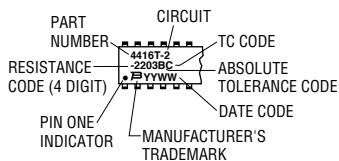
How To Order

44 16 T - 2 - 2222 F A B L



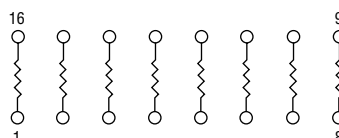
Typical Part Marking

Represents total content. Layout may vary.



Isolated Resistors (1 Circuit)

Available in 16 and 20 Pin

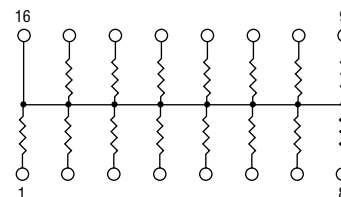


These models incorporate 8 or 10 thin-film resistors of equal value, each connected between a separate pin.

Power Rating per Resistor.....0.15 watt
 Resistance Range10 to 150K ohms

Bussed Resistors (2 Circuit)

Available in 16 and 20 Pin



These models incorporate 15 or 19 thin-film resistors of equal value, each connected by a common pin.

Power Rating per Resistor.....0.10 watt
 Resistance Range10 to 75K ohms

Consult factory for other available options.