

Quadrature Hybrid

20 - 40 MHz

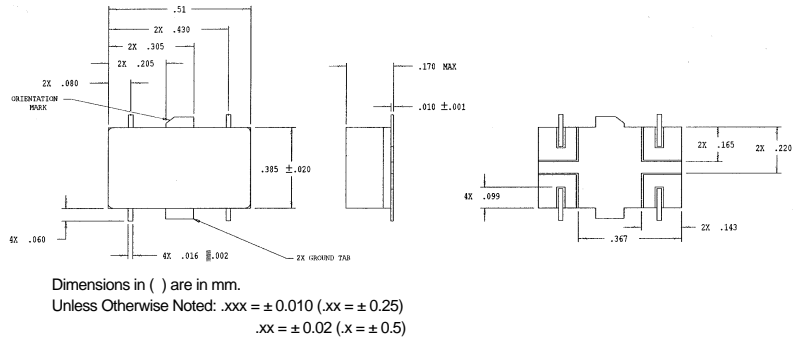
JHS-114/JH-114/133

V2.00

Features

- Octave Bandwidth
- 3° Maximum Phase Deviation from 90°
- Low loss: 0.5 dB Max.
- Impedance: 50 Ohms Nom.
- Input Power: 5 W. Max. @ 25°C
Derated to 1 W. @ 100°C
- Typical Phase Linearity: 3° from Straight Line
- MIL-STD-202 Screening Available

SF-1



Guaranteed Specifications* (From -55°C to +85°C)

Frequency Range	20 - 40 MHz
Insertion Loss (Less coupling)	0.5 dB Max.**
Isolation	20 dB Min.
Amplitude Balance	0.75 dB Max.
VSWR	1.2:1 Max.
Deviation from Quadrature	3° Max.

*All specifications apply with 50 Ohm source and load impedance.

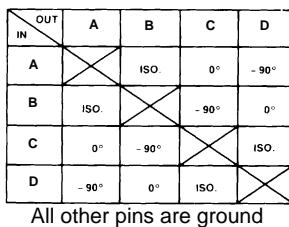
**Average of coupled outputs less 3 dB.

This product contains elements protected by United States Patent Number 3,484,724.

Pin Configuration

JHS-114	A; P1, B; P4, C; P8, D; P5 All other pins are ground.
JH-114	A; P1, B; P4, C; P8, D; P5 All other pins are ground.
JH-133	A; P5, B; P2, C; P11, D; P8 All other pins are ground

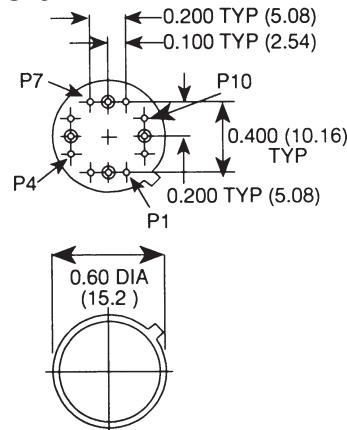
Phasing Diagram



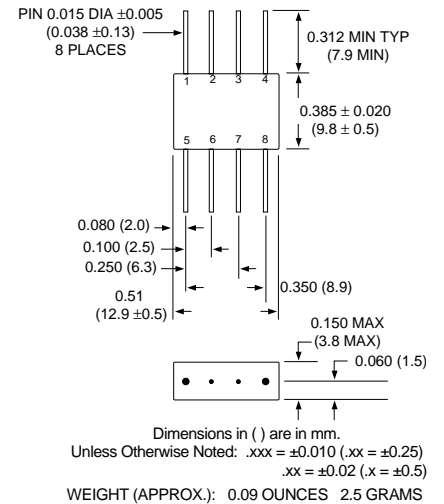
Ordering Information

Model No.	Package
JH-114 PIN	Flatpack
JH-133 PIN	TO-8-2
JHS-114 PIN	SF-1

TO-8-2



FP-2



Bottom of Case is AC Ground

Dimensions in () are in mm.

Unless Otherwise Noted: .xxx = ±0.010 (.xx = ±0.25)
.xx = ±0.02 (.x = ±0.5)

Typical Performance

