

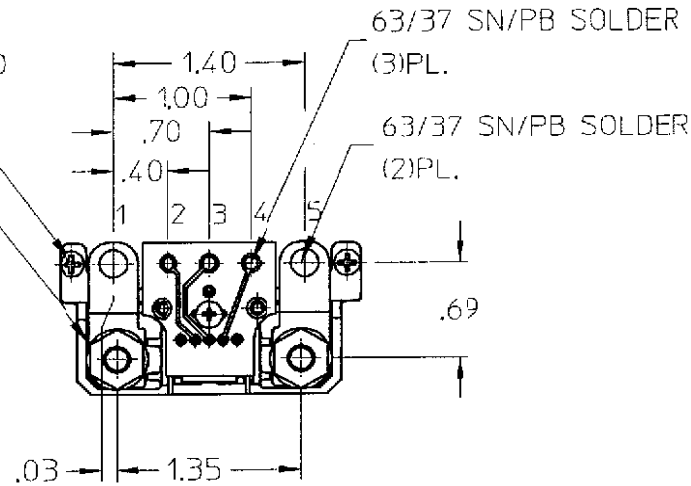
VICOR CONFIDENTIAL

THIS DOCUMENT AND THE DATA DISCLOSED
HEREIN OR HEREWTH IS NOT TO BE REPRODUCED,
USED, OR DISCLOSED IN WHOLE OR IN PART
TO ANYONE WITHOUT PERMISSION OF VICOR CORP.

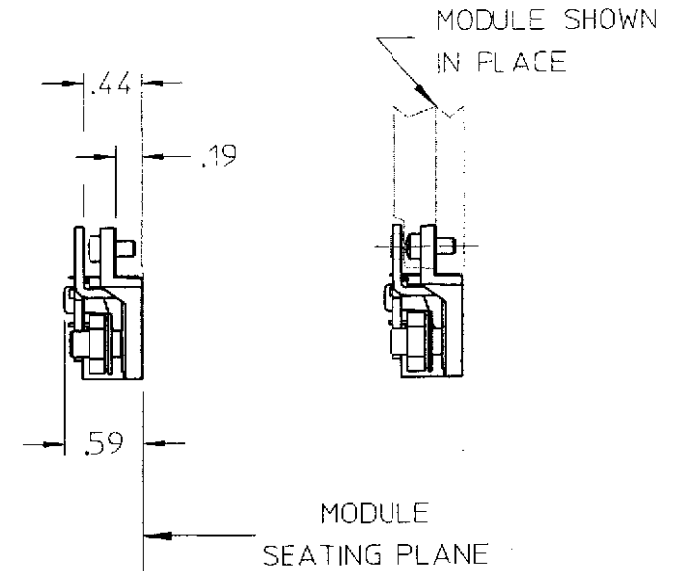
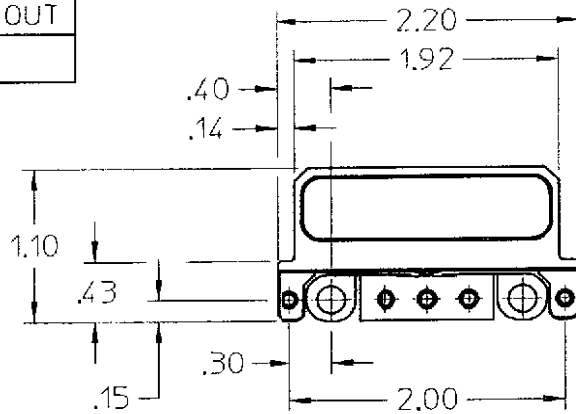
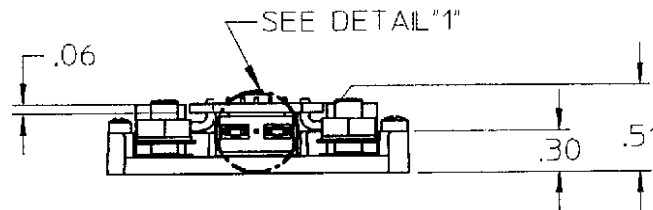
REV.	DESCRIPTION	DATE	APPROVED
#1	DRAWN FOR DEVELOPMENT	DMC 12/10/01	CFH
#2	REVISED PER MARKUP	DMC 5/3/02	CFH

4 FILLISTER HEAD TORQUED
TO 6 IN/LBS (2)PL.

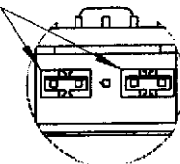
#10 HEX NUT TORQUED
TO 16 IN/LBS. (2)PL.



PIN #	FUNCTION
1	+OUT
2	+SENSE OUT
3	TRIM
4	-SENSE OUT
5	-OUT



REMOVABLE JUMPERS
TIE PINS 1 & 2 AND
4 & 5 TOGETHER



DETAIL-1-
2:1

PRELIMINARY
JUN 03 2002
COPY

DRAWN BY		DATE		VICOR	
		12/10/01			
UNLESS OTHERWISE SPECIFIED DIMENSIONS ARE IN INCHES- TOLERANCES ARE: FRACTIONS DECIMALS ANGLES +1/64 .XX .02 ±1° .XXX ±.010					
THIRD ANGLE PROJECTION		SIZE	FSCM NO.	DWG NO	REV
		B	67131	24676	#2
DO NOT SCALE DRAWING		SCALE	1:1	SHEET 1 OF 1	