

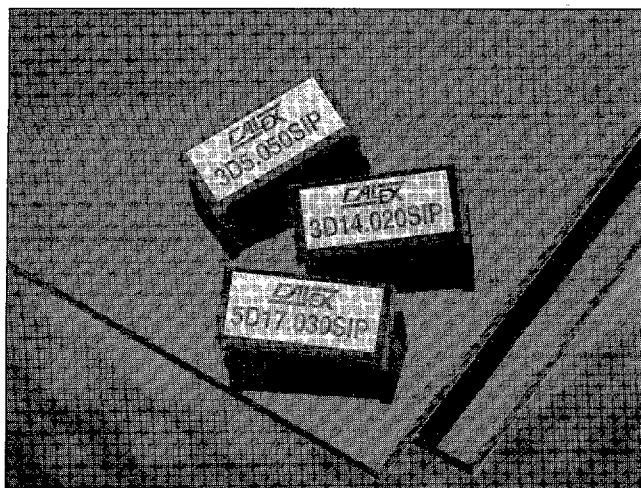
0.6 Watt SIP Series

PRELIMINARY



Industry First 3 Volt Input SIP Converters

Dual Output



Description

The CALEX SIP DUAL is specifically designed to provide nonstandard, bipolar output voltages and isolation for the latest 3 volt digital systems. The series provides semi-regulated outputs of ± 5 , ± 12 and ± 15 volts for directly driving your circuits or ± 7 , ± 14 and ± 17 volt outputs for driving three terminal regulators.

The high efficiency operation of typically 70% for a ± 12 volt output means efficient use of your system power.

Easy five terminal operation makes using the SIP DUAL a snap. Just plug it in and you are ready to solve those nasty analog problems that arise when only 3 volt digital power is available in your system.

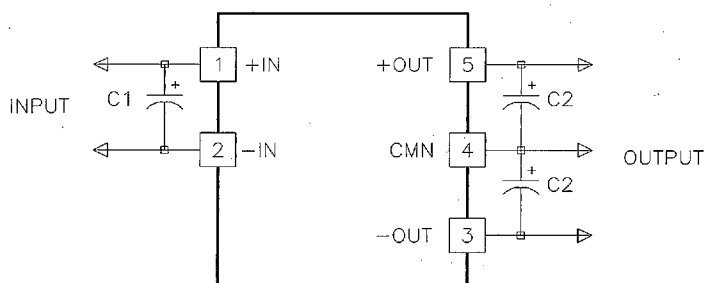
Features

- Operating Range of 3.0 to 3.6 Volts
- Semi-Regulated 0.6 Watt Outputs
 - ± 5 , ± 12 , ± 15 and ± 7 , ± 14 , ± 17 Volt Outputs
- Simple Five Terminal Operation
- Small SIP Package, Fits in 0.19 sq.in. of PCB Area
- Surface Mount Pin Option
- Low Noise Operation
- 5 Year Warranty
- **Customs & Specials - see page D31**

Selection Chart					
Model	Input Range VDC		Output		
	Min	Max	VDC	mA	Power W
3D5.050SIP	3.0	3.6	± 5.0	± 50	0.5
3D7.035SIP	3.0	3.6	± 7.0	± 35	0.5
3D12.025SIP	3.0	3.6	± 12.0	± 25	0.5
3D14.020SIP	3.0	3.6	± 14.0	± 20	0.56
3D15.020SIP	3.0	3.6	± 15.0	± 20	0.6
3D17.015SIP	3.0	3.6	± 17.0	± 15	0.5

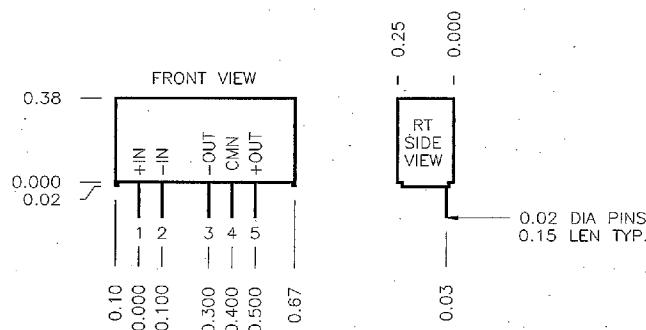
Load Regulation , 20% to 100% Load	5% Typical
Line Regulation	1% / % VIN Typical
Isolation	500 VDC Minimum
I/O Capacitance	10 pF Typical
Operating Temperature Range	0 to 70°C

Application



C1 = 10 μ F if converter is more than 2" from the main power source.
C2 = 10 μ F minimum, may be spread around your board.

Pin Out



B10

Ph: (510) 687-4411
FAX: (510) 687-3333
800-542-3355



1811250 0001346 17T