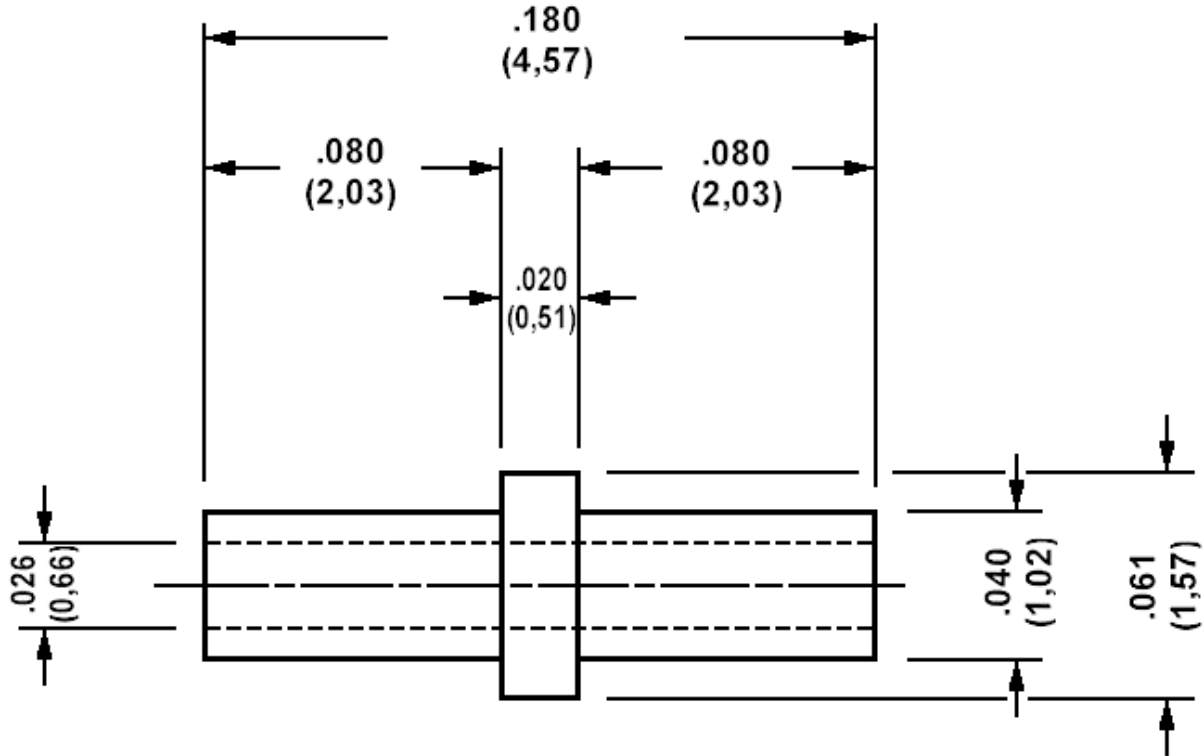


180-1459, Solder terminal, Eyelet, Thru Hole, .043 (1,09) mounting hole (#57 drill)

For Board Thickness .062 (1,59)



For 27-25 AWG wire

How to order code
180-1459-02-YY-00

Basic Part No (YY = plating finish. See table for options)

Component	Material	Finish
		-05
Terminal	Brass	Electro Solder

Recommended Swaging Tools:-	Contact us for more tooling information
Anvil	435-6443-01-00-00
Flare Punch	435-6642-01-00-00

Mechanical tolerance unless otherwise stated $\pm .005(0,13)$