

(FEMALE R/A SMD TYPE FOOT PRINT 1.2mm)

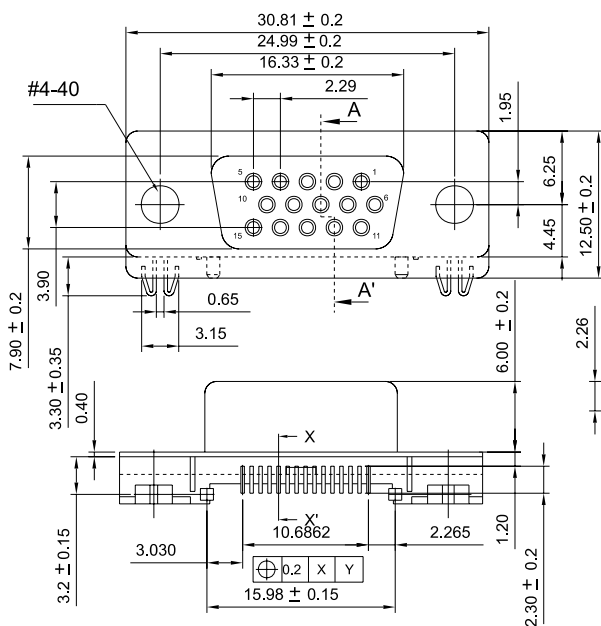


070431FB Series

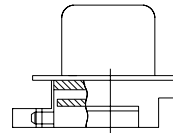
Mates with SUYIN 070902M Series

Specifications:

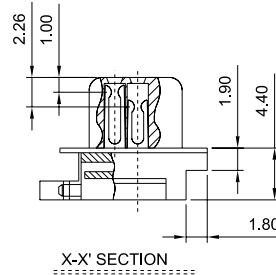
- 15 Circuits
- Insulator Material : Black/Blue High Temp. Plastic
- Operating Temp. Range : 230°C for 30 Seconds
- Terminal Material : Phosphor Bronze
- Plating : Selective Plated (Gold/Tin)
: Metal shell-Nickel Plated
: Soldering clip-Tin Plated
- Max. Current Rating : 2.5A
- Voltage Rating : 250V AC
- Dielectric Strength : 500V (Min. 60 Seconds)



STANDARD TYPE



VESA DDC TYPE II 7731S-15□□□-08



X-X' SECTION

I/O

Order Information

070431FB015□□□□U
1 2 3 6 4 5

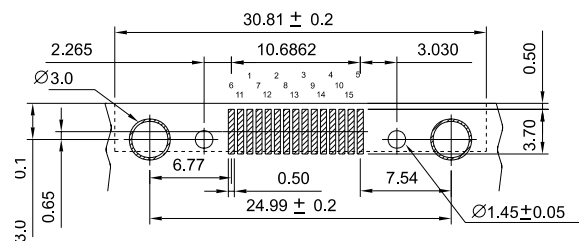
1. 'B' : Right Angle SMT Type
2. No. of Pins
3. Plating
4. Color 'Z' : Black
'I' : Baby Blue(284C)
5. Package
'U' : Tube Package Without Cap
- 6.

SUYIN P/NO.	
070431FB015□□□00□U	Standard TYPE
070431FB015□□□08□U	VESA DDC II TYPE

Reference Page 11

* Available for PC99 system

Recommended P.C.B Layout I



Recommended P.C.B Layout II

