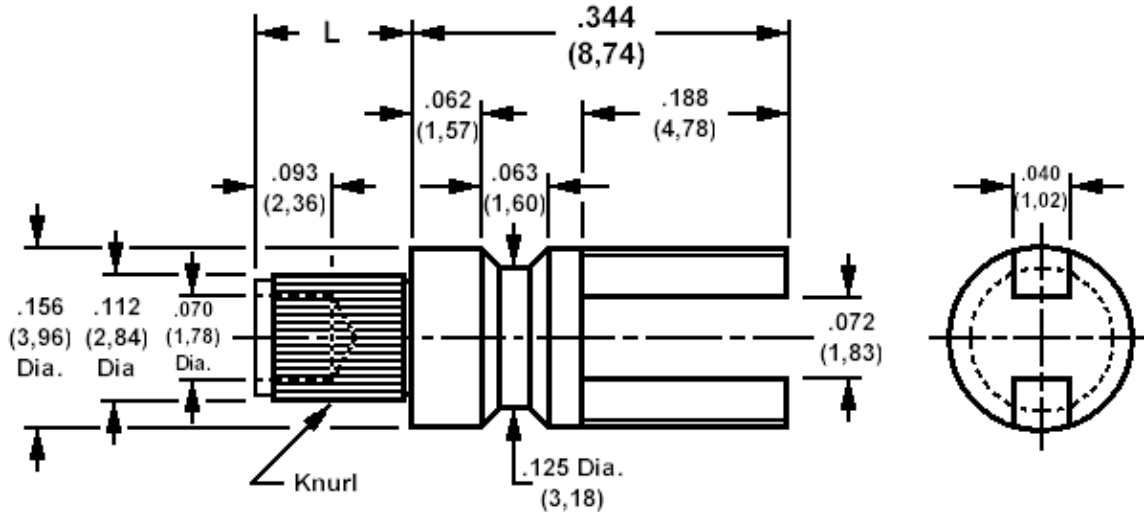


140-1937 Solder terminal, slotted, knurled

Recommended mounting hole .116 (2,95), #32 drill



How to order code

140-1937-XX-YY-00

Basic Part No XX = L dimension, YY = Plating Finish

DIMENSIONS (XX)			
Basic Part No	(XX)	L	Board Thickness
140-1937	-02	.109 (2,77)	.062 (1,59)
	-03	.141 (3,58)	.094 (2,38)
	-04	.172 (4,37)	.125 (3,18)

MATERIALS				
Component	Material	Finish (YY)		
		-01	-04	-05
Terminal	Brass	Silver	Electro tin	Electro Solder

SWAGE TOOLING	
Recommended Swaging Tools:-	
Anvil	435-6418-01-00-00
Roll punch	435-6604-01-00-00
Flare Punch	435-6663-01-00-00