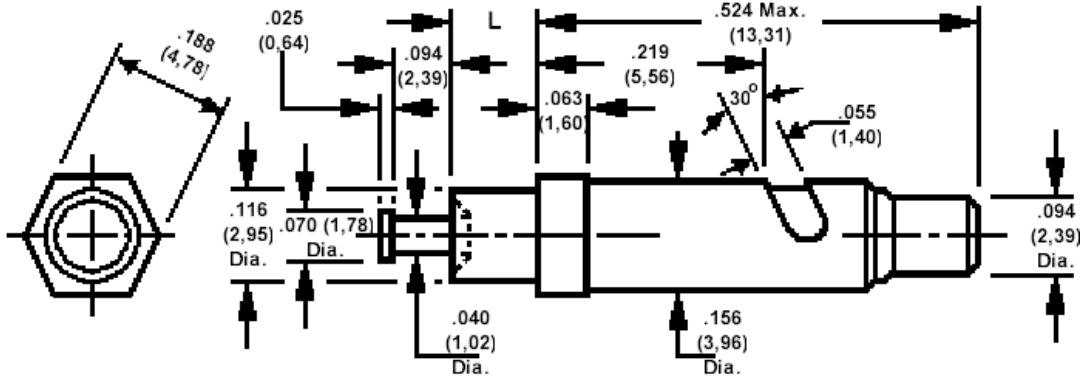


## 410-2330 Component Clip, .055 (1,40) Slot, Swage mount with solder turret

Recommended mounting hole .120 (3,05)



Recommended Lead Wire Sizes - #24 AWG (.020) (0,51) Min. Thru #17 AWG (.045) (1,14) Max.

### How to order code

**410-2330-XX-05-00**

Basic Part No (XX - Board Thickness)

Basic Part No	XX	L	Board Thickness
410-2330	-01	.062 (1,57)	.031 (0,79)
	-02	.094 (2,39)	.062 (1,59)
	-03	.125 (3,18)	.094 (2,38)
	-04	.156 (3,96)	.125 (3,18)
	-05	.219 (5,56)	.188 (4,77)

Component	Material	Finish
Housing	Brass	Electro Solder
Plunger	Brass	Electro Solder
Spring	Cres. Steel	Passivated

TOOLING	
Anvil	435-6444-01-00-00
Roll punch	435-6684-01-00-00