

KXO-HC/KHO-HC Series Crystal Clock Oscillators

HCMOS Drive - TTL or CMOS Compatible

f_o : 1 to 80 MHz

FEATURES

- 1) High speed CMOS clock oscillator
- 2) High power drive level
- 3) Low current consumption
- 4) Output available with TTL or CMOS compatibility
- 5) Enable/disable option
- 6) KHO-HC in 8 pin DIP

HOW TO ORDER

KXO-HC 1 - T S E - 32.0000M T

① ② ③ ④ ⑤ ⑥

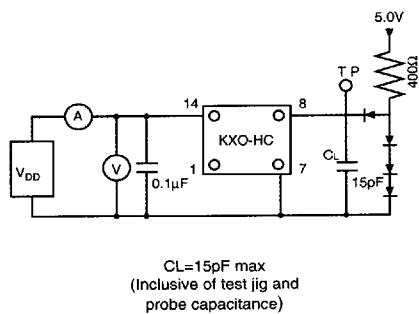
- ① Type: KXO = 14 pin DIP; KHO = 8 pin DIP
- ② Frequency precision:
S = ± 25 ppm (special), 0 = ± 50 ppm, 1 = ± 100 ppm
- ③ Output level/Duty cycle:
TS = TTL compatible/45 to 55%
CS = CMOS compatible/45 to 55%
- ④ Enable/Disable function:
 = without function, E = with function
- ⑤ Frequency
- ⑥ Packaging:
T = tube



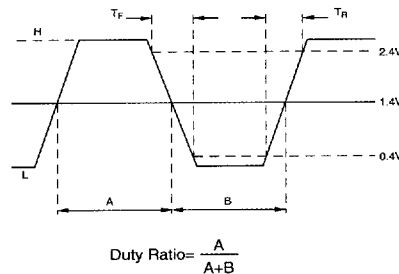
SPECIFICATIONS (KXO-HC-T/KHO-HC-T TTL COMPATIBLE)

Classification	Code	Rating		Unit	Remarks
Output Frequency	f_{OUT}	1 to 50	>50	MHz	
Frequency Precision	$\Delta f/f_o$	S: ± 25	S: ± 25	ppm	0 to 70°C
		0: ± 50	0: ± 50	ppm	4.5V to 5.5V
		1: ± 100	1: ± 100	ppm	
Operating Temperature Range	T_{OPR}	0 to +70	0 to +70	°C	
Voltage	V_{DD}	5 ± 0.5	5 ± 0.25	V	
Electrical Current Consumption	I_{DD}	50 max	70 max	mA	$f=50$ MHz, $C_L=15$ pF (10TTL load)
Output	Duty Cycle	S_Y	45 to 55	%	1.4V DC level
	"0" Level	V_{OL}	0.4 max	V	At $I_{OL}=-1$ mA
	"1" Level	V_{OH}	2.4 min	V	At $I_{OH}=-1$ mA
	Rise and Fall Time	T_R, T_F	5 max	3.5 max	nsec
Fan Out		TTL 10 gates	TTL 10 gates		CMOS level OK
Time to Enable/Disable		100 max	100 max	nsec	Tristate output
Input Current	I_{IH}	10 max	10 max	μ A	
	I_{IL}	-150 max	-150 max	μ A	
Input Voltage	V_{IH}	2.2 min	2.2 min	V	
	V_{IL}	0.8 max	0.8 max	V	

TEST CIRCUIT (KXO-HC-T/KHO-HC-T)

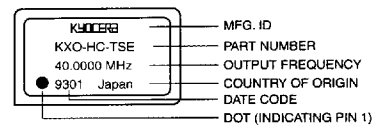


SHAPE OF OUTPUT WAVE (KXO-HC-T/KHO-HC-T)



MARKINGS

KXO-HC



KHO-HC

