

Proximity Sensors


Ring Style Sensors

3-Wire DC Type

972RS Series

- FEATURES
- Sealed to NEMA 3, 4, 12, 13
 - Ring style sensor – drop-thru sensing
 - .75 in. ring dia.
 - Detects items as small as .062 in. diameter
 - 0 to 50°C (32 to 122°F) temperature range
 - LED output indicator
 - Sensitivity adjustment to maintain stability over wide range of target sizes
 - Incorrect wiring, short circuit protection (sourcing)
 - **TTL compatible, 0.5VDC saturation voltage** (NPN output only).

ORDER GUIDE

Sensor Package Style	Sensing Range mm (in.)	Sensor Type	LED	Sw. Freq.	Output Type	Catalog Listing
	Adjustable	3-wire DC	YES	350 Hz	NPN, N.O. PNP, N.O.	972RS.75-A8N-L 972RS.75-A8P-L

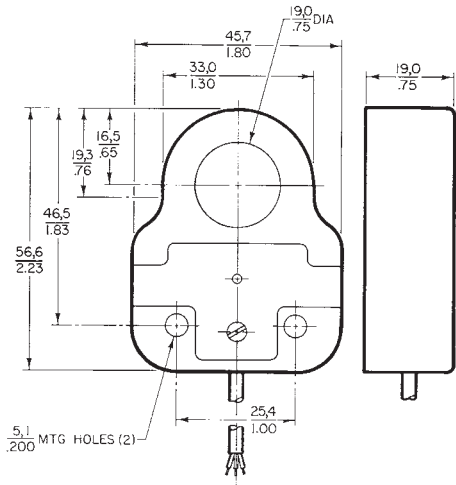
Minimum target size: 1,6 (.06) diameter x 6,2 (.25) long

SPECIFICATIONS	922 Series
Sensor Type	3-wire DC
Supply Voltage	8.5-35 VDC
Load Current, min./max.	0 - 200 mA
Leakage Current, max.	10 µA
Voltage Drop, max.	.5 V Sink, 1.5 V Source
Current Consumption, max.	20 mA
Repeatability, Unshielded	±3%
Hysteresis	3-15%
Housing Material	Polycarbonate
Cable Type	PVC jacket, 26 gage

MOUNTING DIMENSIONS

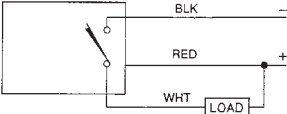
mm
in.

(For reference only)



WIRING DIAGRAMS

NPN (Sinking) N.O.



PNP (Sourcing) N.O.

