

**PLEASE CHECK WWW.MOLEX.COM FOR LATEST PART INFORMATION**

**Part Number:** [0359570320](#)  
**Status:** **Planned for Obsolescence**  
**Description:** 2.79mm (.110") Width Tab Receptacle Housing, 3 Circuits

**Documents:**

[Drawing \(PDF\)](#) [RoHS Certificate of Compliance \(PDF\)](#)  
[Product Specification PS-35957-001 \(PDF\)](#)

**General**

Product Family Crimp Housings  
 Series [35957](#)  
 Product Name N/A

**Physical**

Circuits (maximum) 3  
 Color - Resin Natural  
 Gender Female  
 Glow-Wire Compliant No  
 Lock to Mating Part Yes  
 Material - Resin Nylon  
 Number of Rows 1  
 Packaging Type Bag  
 Panel Mount No  
 Pitch - Mating Interface (in) 0.157 In  
 Pitch - Mating Interface (mm) 4.00 mm  
 Polarized to Mating Part Yes  
 Stackable No  
 Temperature Range - Operating -40°C to +105°C

**Electrical**

Current - Maximum per Contact 10A

**Material Info**

**Reference - Drawing Numbers**

Product Specification PS-35957-001  
 Sales Drawing SD-35097-0320

**EU RoHS**

**ELV and RoHS  
Compliant**

**REACH SVHC**

Not Reviewed

**Halogen-Free**

**Status**

**Halogen-Free**

**China RoHS**



**Need more information on product  
environmental compliance?**

Email [productcompliance@molex.com](mailto:productcompliance@molex.com)  
 For a multiple part number RoHS Certificate of  
 Compliance, [click here](#)

Please visit the [Contact Us](#) section for any  
 non-product compliance questions.

**Search Parts in this Series**

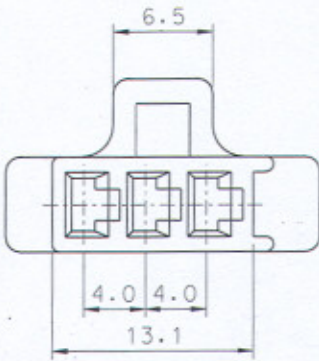
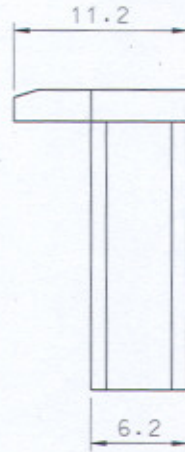
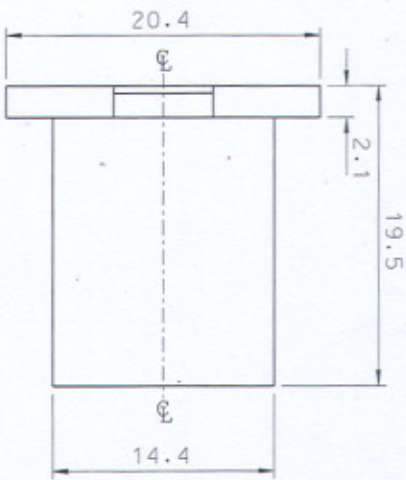
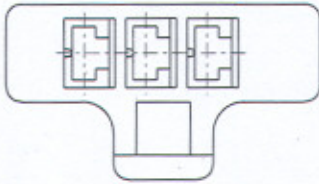
[35957Series](#)

**Mates With**

Tab Receptacle Housing [35957](#)

**Use With**

Quick Disconnect [35711](#)



- NOTES
1. MATERIAL : NYLON 66 (UL94V-2)
  2. COLOR : NATURAL

MATERIAL		SEE NOTES		MOLEX MOLEX-KOREA CO.,LTD.	
GENERAL TOLERANCE		±0.3		DRAWN BY J.S.KANG	
ANGLE :		±1°		CHK'D BY H.K. Cho	
DIMENSION CLASSIFICATION		▽ : CRITICAL ▲ : MAJOR		SCALE 3/1	
ASS'Y PART		TITLE :		SHEET	
DESCRIPTION ENG. NO.		.110 W/W CONN'		1 of 1	
DATE		96.4.29		REV	
ECN		---		A	
DATE		---		---	
NEW RELEASED		---		---	
LTR REVISION RECORD		---		---	
REVISE ONLY ON CAD SYSTEM		---		---	

THIS DRAWING CONTAINS INFORMATION THAT IS PROPRIETARY TO MOLEX/KOREA AND SHOULD NOT BE USED WITHOUT WRITTEN PERMISSION  
MX-A3(ANSI:290.420)

S9570320.dgn

8 7 6 5 4 3 2 1

A B C D E F