

FEATURES
<ul style="list-style-type: none"> • Frequency Range: 2025 - 2226 MHz • Step Size: 100 KHz • PLL-V12C - Style Package
APPLICATIONS
<ul style="list-style-type: none"> • Satcomm • Telecommunications •

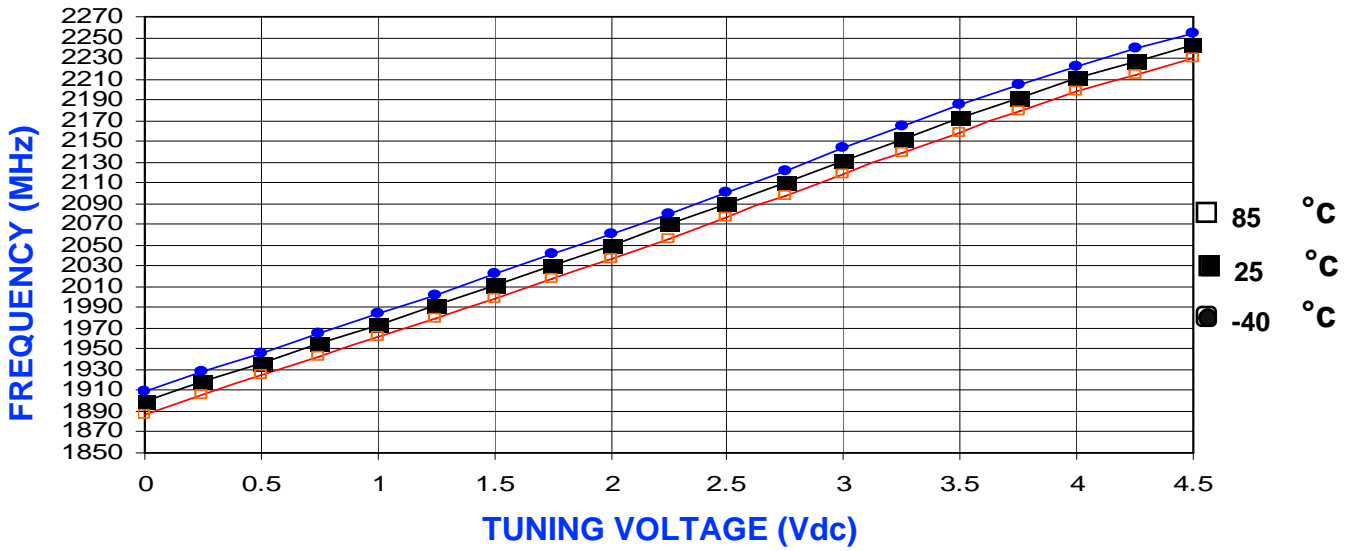
PERFORMANCE SPECIFICATIONS	VALUE	UNITS
Frequency Range	2025 - 2226	MHz
Phase Noise @ 10 kHz offset (1 Hz BW, typ.)	-94	dBc/Hz
Harmonic Suppression (2nd, typ.)	-15	dBc
Sideband Spurs (typ.)	-65	dBc
Power Output	0±5	dBm
Load Impedance	50	Ω
Step Size	100	KHz
Charge Pump Output Current	5000	μA
Switching Speed (typ., adjacent channel)	3	mSec
Startup Lock Time (typ.)	3	mSec
Operating Temperature Range	-40 to 85	°C
Package Style	PLL-V12C	
POWER SUPPLY REQUIREMENTS		
Supply Voltage: VCO (Vcc, nom.)	5	Vdc
Supply Current: VCO Icc, typ.)	21	mA
Supply Voltage: PLL (Vcc, nom.)	3	Vdc
Supply Current: PLL (Icc, typ.)	10	mA

All specifications are typical unless otherwise noted and subject to change without notice.

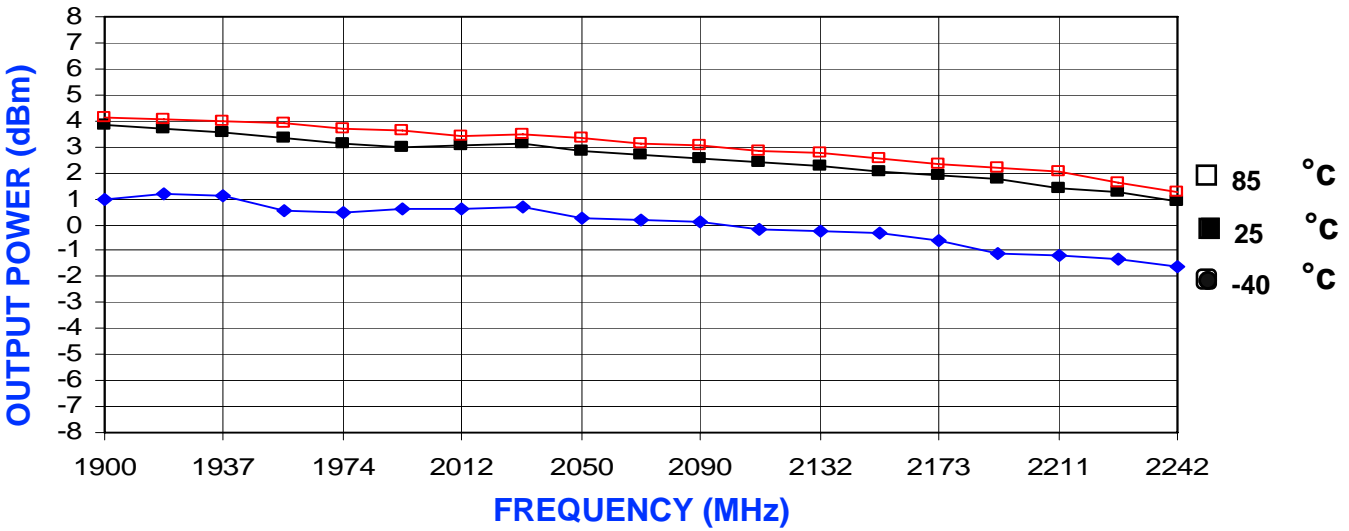
APPLICATION NOTES
<ul style="list-style-type: none"> • AN-107 : How to Solder Z-COMM VCOs / PLLs • AN-202 : PLL Functional Description

NOTES:
 REF 10MHz.

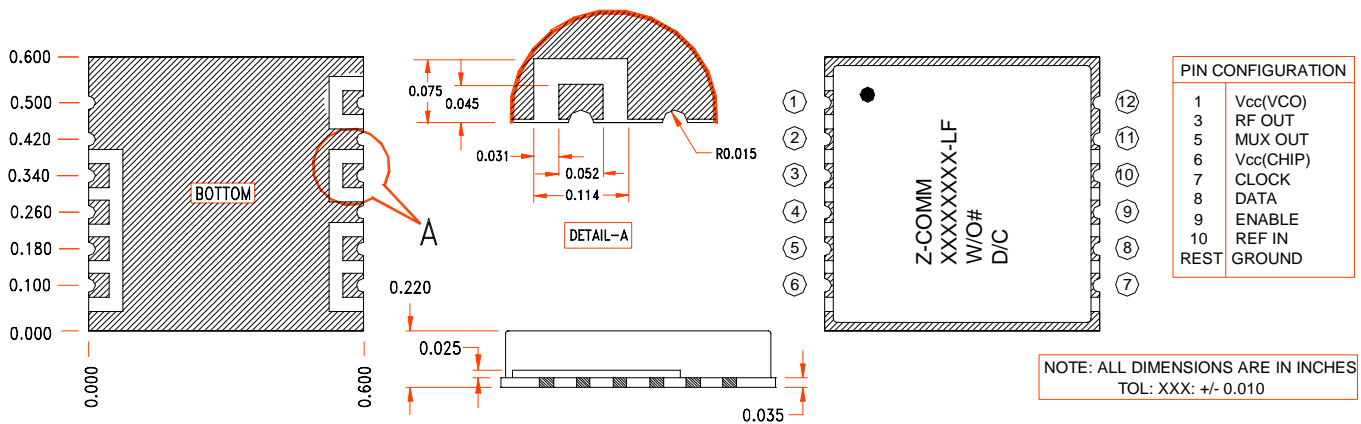
VCO TUNING CURVE, typ.



VCO POWER CURVE, typ.



PHYSICAL DIMENSIONS



PIN CONFIGURATION	
1	Vcc(VCO)
3	RF OUT
5	MUX OUT
6	Vcc(CHIP)
7	CLOCK
8	DATA
9	ENABLE
10	REF IN
REST	GROUND

NOTE: ALL DIMENSIONS ARE IN INCHES
TOL: XXX: +/- 0.010