



TERMINAL BLOCKS

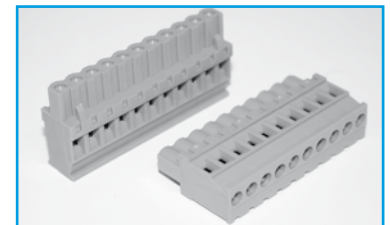
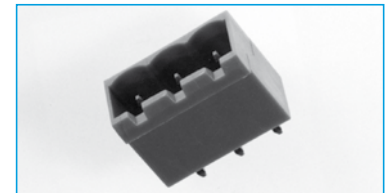
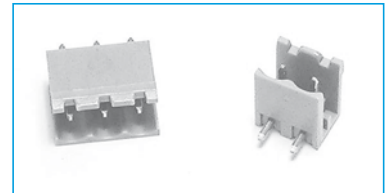
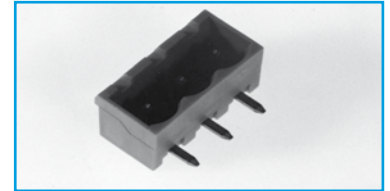
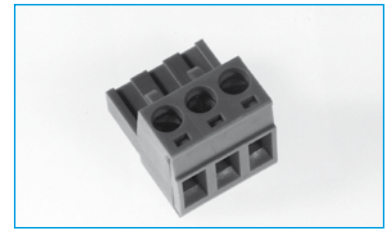
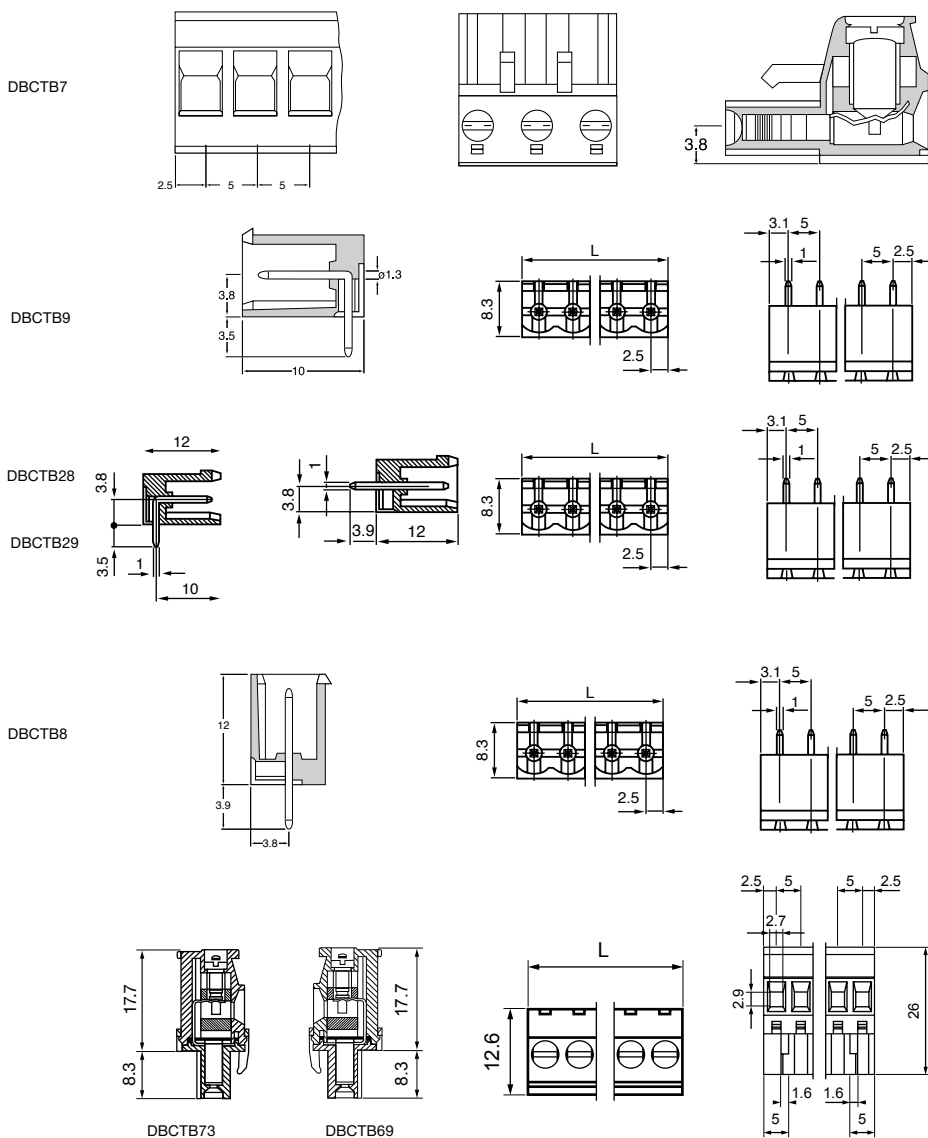
5mm PITCH PLUG IN

- 5mm pitch
- Rating 12A
- Open & Closed end headers
- UL approved
- Colour green
- Horizontal and Vertical

SPECIFICATION

Rating: 12A/380V	Working temperature: -20°C to 125°C	Pin/terminal: 5 micron tinned nickel plated brass
Dielectric Strength: >2.5KV	Short Period: 160°	Recommended PCB hole size: ø1.4mm
Insulation Resistance: >5MΩ	Moulding: UL94V-0 flame retardant nylon 66	

OUTLINE DRAWING



ORDERING INFORMATION

DBC	TB	28	/2
Dubilier Connectors	Series Terminal Blocks	Style 7 = Female 73 = Standard vertical female 69 = Reversed vertical female 8 = Closed end straight 9 = Closed end right angle 28 = Open end straight 29 = Open and right angle	No of Ways 2 = 2ways 3 = 3ways * other number of ways are available Please consult the office for further details

SECTION 18