



SERIES KAP SWITCHES

PIANO DIP SWITCHES

TACT SWITCHES

NAVIGATION SWITCHES

PUSHBUTTON SWITCHES

TOGGLE SWITCHES

ROCKER SWITCHES

SLIDE SWITCHES

SNAP-ACTION SWITCHES

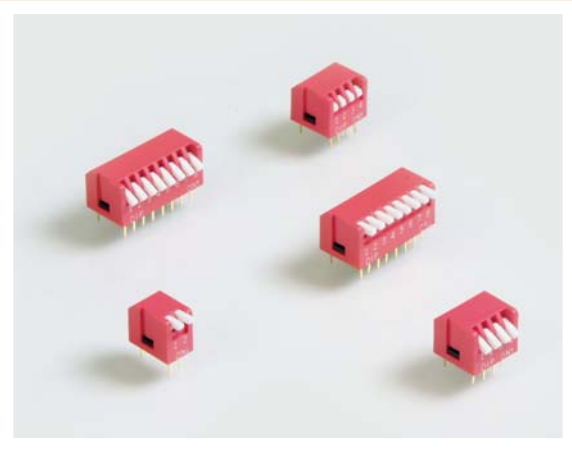
DIP SWITCHES

KEYLOCK SWITCHES

ROTARY SWITCHES

DETECTOR SWITCHES

CAP OPTIONS



FEATURES & BENEFITS

- ▶ Piano style
- ▶ Top side off or top side on option
- ▶ Tape seal option

APPLICATIONS/MARKETS

- ▶ Garage door openers
- ▶ Test & instrumentation
- ▶ Telecommunications
- ▶ Controller application

SPECIFICATIONS

| | |
|----------------------------|--|
| Switch Function: | SPST, 2 thru 12 positions (except position 11) |
| Contact Rating: | Switch: 25mA @ 24V DC Carry: 100mA @ 50V DC |
| Insulation Resistance: | 100 MΩ Min. @ 500V DC |
| Contact Resistance: | Initial: 50 mΩ typical @ 2-4V DC @ 100mA After Life: 100mΩ typical @ 2-4 DC @ 100mA |
| Operating Life: | 2,000 make-and-break cycles, each circuit |
| Operating Force: | 1000 gf max. |
| Travel (Actuator): | 2.0 mm typical |
| Dielectric Strength: | 500V RMS min. @ sea level between adjacent terminals |
| Temperature Range: | Operating/Storage: -40° C to 85° C |
| Vibration: | To MIL-STD-202F, Method 201 A |
| Shock: | To MIL-STD-202F, Method 213B, Condition A |
| Soldering Recommendations: | Wave: 500 F (260 C) for 5s max; Hand: 30W soldering iron @ 608 F (320 C) for 2s typical. Keep all switches in the "OFF" position during soldering and cleaning process. |

MATERIALS

| | |
|-----------------------|---|
| Housing and Actuator: | Glass filled polyester (PBT) UL94-V0 |
| Contacts: | Phosphor Bronze with gold plate over nickel plate |
| Terminals: | Phosphor Bronze with gold plate over nickel plate |
| Tape: | Mylar |

PACKAGING

Switches are supplied in standard IC tubes with all poles in the "OFF" position.

HOW TO ORDER

| SERIES | MODEL NO. | TERMINATION | CIRCUIT | NO. OF POSITIONS | ACTUATOR | SEAL |
|--------|----------------|-------------|----------|--|--|---|
| KA | P = Piano Type | 1 = PC Pin | 1 = SPST | 02 03 04 05 06 07 08 09 10 12 | R = Recessed Act., Top Side OFF E = Extended Act., Top Side OFF V = Recessed Act., Top Side ON W = Extended Act., Top Side ON | (None) = Std. Unsealed T = Top Tape Sealed |

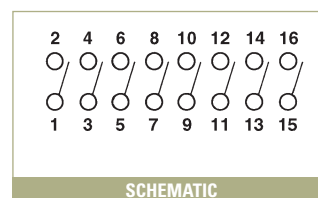
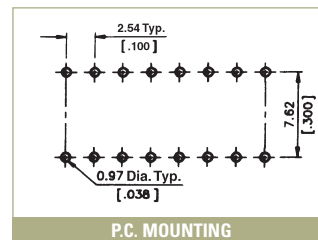
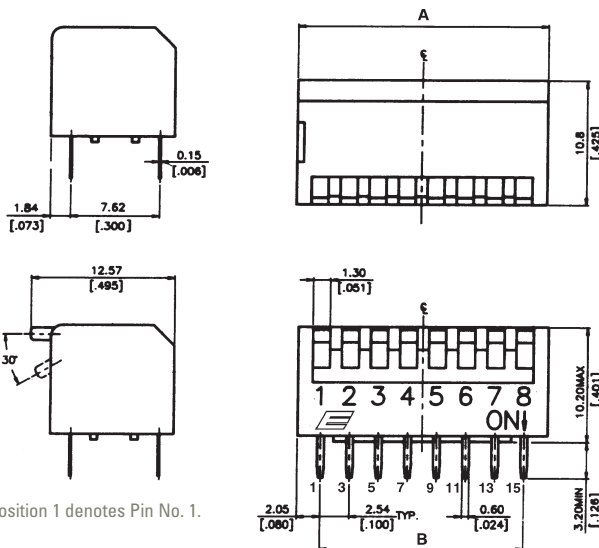
▶ ▶ ▶ Example Ordering Number
KA-P-1-1-04-R-T

Specifications subject to change without notice.

TERMINATION OPTIONS

KAP

1 PC PIN

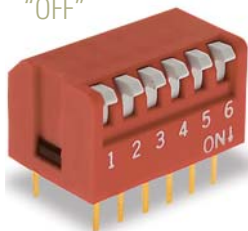


ACTUATOR OPTIONS

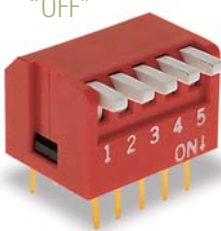
| Positions: | 2 | 3 | 4 | 5 | 6 | 7 | 8 | 9 | 10 | 12 |
|------------|--------|--------|--------|--------|--------|--------|--------|--------|---------|---------|
| "A" | 6.64 | 9.18 | 11.72 | 14.26 | 16.8 | 19.34 | 21.88 | 24.42 | 26.96 | 32.04 |
| Dimension: | (.261) | (.361) | (.461) | (.561) | (.661) | (.761) | (.861) | (.961) | (1.061) | (1.261) |
| "B" | 2.54 | 5.08 | 7.62 | 10.16 | 12.7 | 15.24 | 17.78 | 20.32 | 22.86 | 27.94 |
| Dimension: | (.100) | (.200) | (.300) | (.400) | (.500) | (.600) | (.700) | (.800) | (.900) | (1.100) |

NUMBER OF POSITIONS

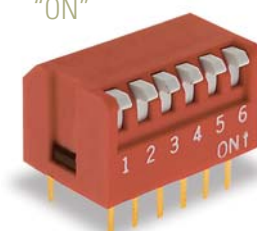
R RECESSED TOPSIDE
"OFF"



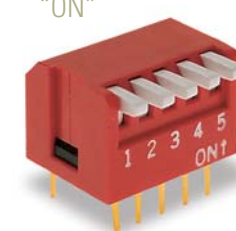
E EXTENDED TOPSIDE
"OFF"



V RECESSED TOPSIDE
"ON"

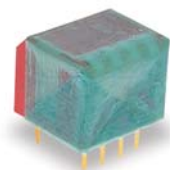


W EXTENDED TOPSIDE
"ON"



SEAL OPTIONS

T Top Tape Sealed



TACT SWITCHES

NAVIGATION SWITCHES

PUSHBUTTON SWITCHES

TOGGLE SWITCHES

ROCKER SWITCHES

SLIDE SWITCHES

SNAP-ACTION SWITCHES

DIP SWITCHES

KEYLOCK SWITCHES

ROTARY SWITCHES

DETECTOR SWITCHES

CAP OPTIONS