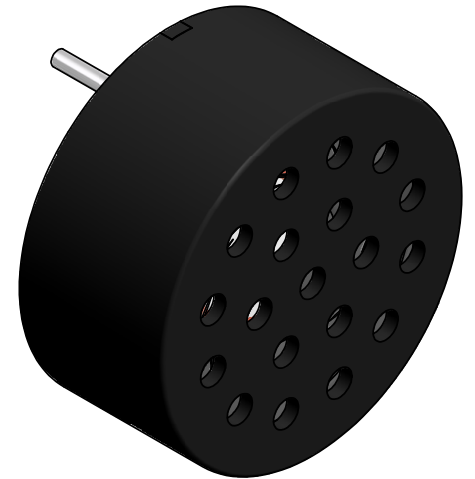
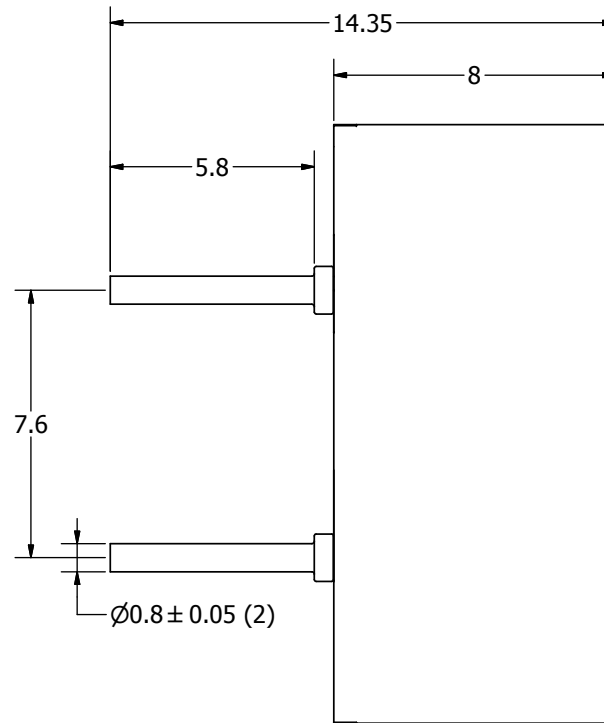
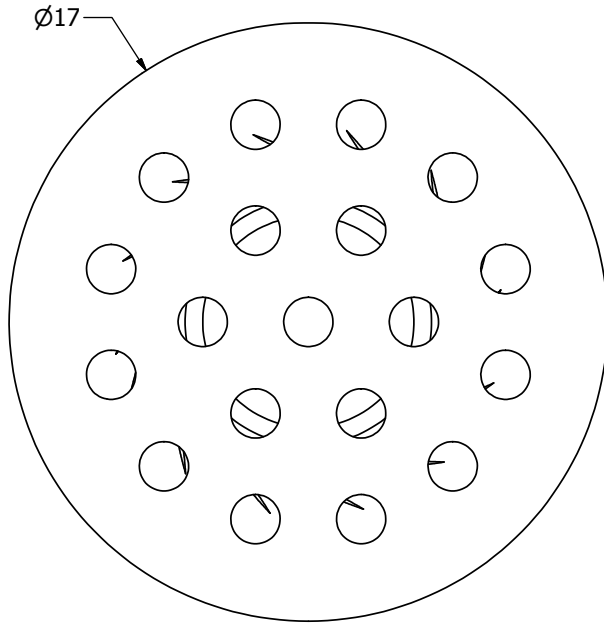


SPECIFICATIONS		
PARAMETERS	VALUES	UNITS
RATED INPUT POWER	0.2	W
MAX INPUT POWER	0.5	W
IMPEDANCE (3Khz @ 1V)	32 ± 15%	OHM
OUTPUT SPL @ 0.2W/0.1M (AT 2.0, 2.5, 3.0, 4.0 kHz)	90 ± 3	dBA
DISTORTION (MAX.)	10%	-
RESONANT FREQUENCY	1,800 ± 20%	Hz
FREQUENCY RANGE	1,700 ~ 20,000	Hz
HOUSING MATERIAL	PBT	-
CONE MATERIAL	MYLAR	-
MAGNET MATERIAL	Nd-Fe-B	-
OPERATING TEMPERATURE	-20 ~ +55	°C
WEIGHT	2.9	grams


THIS DOCUMENT CONTAINS DATA PROPRIETARY TO PROJECTS UNLIMITED, INC. ANY USE OR REPRODUCTION, IN ANY FORM, WITHOUT PRIOR WRITTEN PERMISSION OF PROJECTS UNLIMITED, INC. IS PROHIBITED.
©2003, Projects Unlimited Inc.

REVISION HISTORY			
LTR	DESCRIPTION	DATE	APPROVED
-	RELEASED FROM ENGINEERING	3/29/2006	
A	REVISED IMPEDANCE & FREQUENCY	11/20/2006	B.R.
B	ADDED OVERALL HEIGHT DIMENSION	2/25/2009	B.R.
C	REVISED TO INVENTOR 3-D DRAWING TEMPLATE	2/26/2009	B.R.



NOTES:

1. ALL DIMENSIONS ARE IN MILLIMETERS.
2. SPECIFICATIONS SUBJECT TO CHANGE OR WITHDRAWAL WITHOUT NOTICE.
3. THIS PART IS RoHS 2002/95/EC COMPLIANT.

UNLESS OTHERWISE SPECIFIED: DIMENSIONS ARE IN MILLIMETERS, TOLERANCES ARE ±0.5 AND ANGLES ARE ±3°.	SIZE A3	Designed by	Date	Checked by	Date	Approved by	Date	Drawn Date	
		B.R.	3/29/2006	B.R.	3/29/2006	E.P.	3/29/2006	2/24/2009	
AST-1732MR-R.idw						AST-1732MR-R		Edition	Sheet
								Speaker	