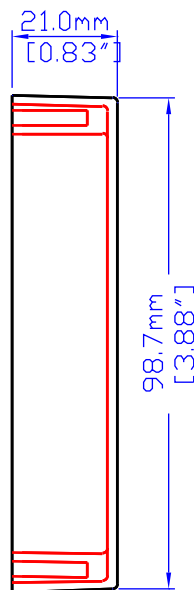
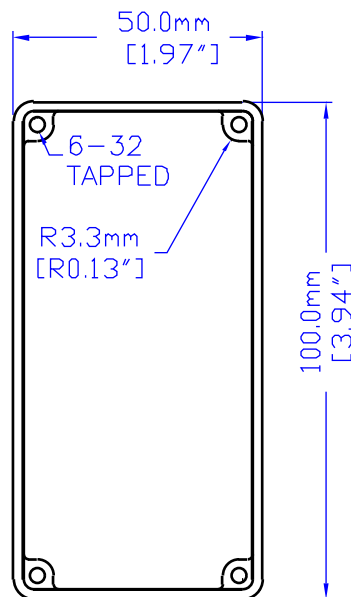


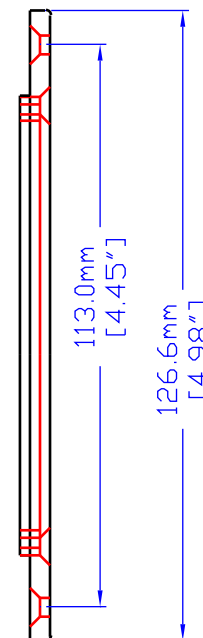
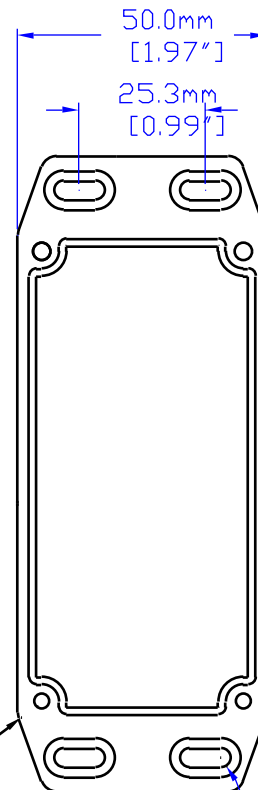
NOTES

MATERIAL: -DIECAST ALUMINUM ALLOY.
-FOUR 6-32 Phillips SCREWS,

VIEW OF BOX (LID REMOVED)



VIEW INSIDE LID



NOTE:
FOR DETAIL DIMENSIONING
REFER TO DRAWING
1590C

A MODIFICATION SERVICE IS AVAILABLE.
THESE ENCLOSURES CAN BE MILLED, DRILLED
PAINTED, SILK SCREENED TO YOUR SPECIFICATIONS
TO PROVIDE A FINISHED ENCLOSURE FOR
YOUR PROJECT.
PHONE OR FAX FOR AN IMMEDIATE QUOTATION,

WATERPROOF ENCLOSURE IS AVAILABLE # 1590WGFL,
SILICONE SEAL, STAINLESS STEEL SCREWS.
THE WATERPROOF ENCLOSURE WILL AFFORD
PROTECTION AGAINST LIQUID TO
NEMA 4 AND IP65 LEVELS.

THIS ENCLOSURE IS ALSO AVAILABLE PAINTED
STANDARD COLOURS, BLACK AND GRAY
POLYESTER POWDER COAT TEXTURE FINISH.
IDEAL FOR EXTERIOR APPLICATIONS,



HAMMOND MANUFACTURING

1590GFL

website: www.hammondmfg.com