

Copper Compression Connectors

BY Line DIN 46234

Non-insulated copper brazed terminals 0,5 - 240 mm²

Description

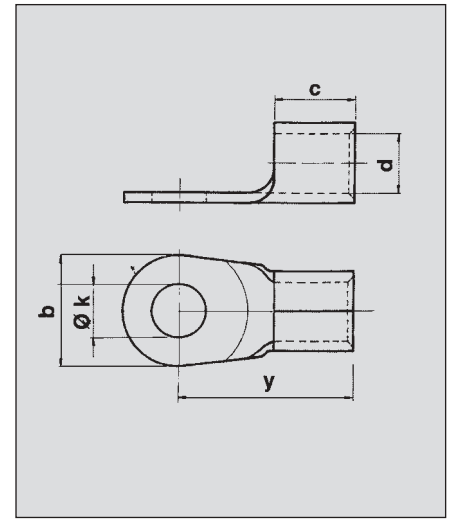
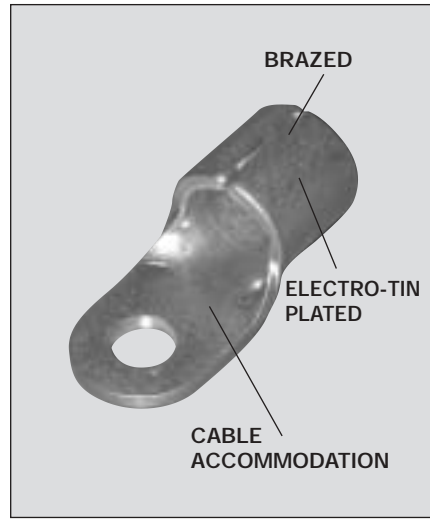
- Range of copper sheet, brazed terminals taking wires from 0,5 - 240 mm²

Construction

- Electrolytic copper sheet, electro tinned

Performance

- Heat resistant up to +125°C



Tooling

- The indicated numbers in the tooling table refer to pages 48 - 63.

* Not included in DIN 46234
N= Nest die, I= Indentor

mm ²	Stud size	Cat. No.	d	y	b	c	Øk	Pack Qty	Mechanical tools		Hydraulic tools									
									Tooling number	MRD29	Y500CT BCT500	Y35/Y35BH Y750/Y750BH BAT35/BAT750								
0,5 - 1,5	2,5	BY1M27D	1,6	10,8	6,0	4,8	2,7	100	1 - 22											
	3,0	BY1M32D	1,6	10,8	6,0	4,8	3,2													
	3,5	BY1M37D	1,6	10,8	6,0	4,8	3,7													
	4,0	BY1M43D	1,6	11,8	8,0	4,8	4,3													
	5,0	BY1M53D	1,6	12,8	10,0	4,8	5,3													
	6,0	BY1M65D	1,6	14,8	11,0	4,8	6,5													
>1,5 - 2,5	3,0	BY25M32D	2,3	10,8	6,0	4,8	3,2	100	1 - 22											
	3,5	BY25M37D	2,3	10,8	6,0	4,8	3,7													
	4,0	BY25M43D	2,3	11,8	8,0	4,8	4,3													
	5,0	BY25M53D	2,3	13,8	10,0	4,8	5,3													
	6,0	BY25M65D	2,3	15,8	11,0	4,8	6,5													
	8,0	BY25M84D	2,3	16,8	14,0	4,8	8,4													
>4 - 6	4,0	BY6M43D	3,6	14,0	8,0	6,0	4,3	50	1 - 14 - 22	50NKC1	N	I								
	5,0	BY6M53D	3,6	15,0	10,0	6,0	5,3													
	6,0	BY6M65D	3,6	16,0	11,0	6,0	6,5													
	8,0	BY6M84D	3,6	19,0	14,0	6,0	8,4													
	10,0	BY6M105D	3,6	21,0	18,0	6,0	10,5													
>6 - 10	4,0	BY4-10*	4,5	16,0	10,0	8,0	4,3	50	14	50NKC2	50PE0670C	WVB10	WPOS	UVB10						
	5,0	BY5-10	4,5	16,0	10,0	8,0	5,3													
	6,0	BY6-10	4,5	17,0	11,0	8,0	6,5													
	8,0	BY8-10	4,5	20,0	14,0	8,0	8,4													
	10,0	BY10-10	4,5	21,0	18,0	8,0	10,5													
	12,0	BY12-10	4,5	23,0	22,0	8,0	13,0													
>10 - 16	5,0	BY5-16	5,8	20,0	11,0	10,0	5,3	50	14	50NKC2	50PE0670C	WVB16	WPOS	UVB16						
	6,0	BY6-16	5,8	20,0	11,0	10,0	6,5													
	8,0	BY8-16	5,8	22,0	14,0	10,0	8,4													
	10,0	BY10-16	5,8	24,0	18,0	10,0	10,5													
	12,0	BY12-16	5,8	26,0	22,0	10,0	13,0													
>16 - 25	5,0	BY5-25	7,5	25,0	12,0	11,0	5,3	50	14	50NKC2	50PE0670C	WVB25	WPOS	UVB25						
	6,0	BY6-25	7,5	25,0	12,0	11,0	6,5													
	8,0	BY8-25	7,5	25,0	16,0	11,0	8,4													
	10,0	BY10-25	7,5	26,0	18,0	11,0	10,5													
	12,0	BY12-25	7,5	31,0	22,0	11,0	13,0													
	14,0	BY14-25*	7,5	31,0	22,0	11,0	15,0													
	16,0	BY16-25	7,5	35,0	28,0	11,0	17,0													
>25 - 35	6,0	BY6-35	9,0	26,0	15,0	12,0	6,5	50	14	50NKC2	50PE0670C	WVB35	WPOS	UVB35						
	8,0	BY8-35	9,0	26,0	16,0	12,0	8,4													
	10,0	BY10-35	9,0	27,0	18,0	12,0	10,5													
	12,0	BY12-35	9,0	31,0	22,0	12,0	13,0													
	14,0	BY14-35*	9,0	31,0	22,0	12,0	15,0													
	16,0	BY16-35	9,0	35,0	28,0	12,0	17,0													

Copper Compression Connectors

BY Line DIN 46234

Non-insulated copper brazed terminals 0,5 - 240 mm²

mm ²	Stud size	Cat. No.	d	y	b	c	Øk	Mechanical tools		Hydraulic tools				
								Pack Qty	MRD29		Y500CT BCT500		Y35BH Y35/Y750 BAT35	
									N	I	N	I	N	I
>35 - 50	6,0	BY6-50	11,0	34,0	18,0	16,0	6,5	50	50NKC1	50PE0670C	WVB50	WPC6S	UVB50	Y35P106S
	8,0	BY8-50	11,0	34,0	18,0	16,0	8,4							
	10,0	BY10-50	11,0	34,0	18,0	16,0	10,5							
	12,0	BY12-50	11,0	36,0	22,0	16,0	13,0							
	14,0	BY14-50*	11,0	36,0	22,0	16,0	15,0							
	16,0	BY16-50	11,0	40,0	22,0	16,0	17,0							
>50 - 70	8	BY8-70	13,0	38,0	22,0	18,0	8,4	25	50NKC3	50PE0670C	WVB70	WPC6S	UVB70	Y35P106S
	10	BY10-70	13,0	38,0	22,0	18,0	10,5							
	12	BY12-70	13,0	38,0	22,0	18,0	13,0							
	14	BY14-70*	13,0	38,0	22,0	18,0	15,0							
	16	BY16-70	13,0	42,0	28,0	18,0	17,0							
>70 - 95	10	BY10-95	15,0	42,0	24,0	20,0	10,5	25			WVB95	WPC6S	UVB95	Y35P106S
	12	BY12-95	15,0	42,0	24,0	20,0	13,0							
	14	BY14-95*	15,0	42,0	24,0	20,0	15,0							
	16	BY16-95	15,0	44,0	28,0	20,0	17,0							
>95 - 120	10	BY10-120	16,5	44,0	24,0	22,0	10,5	25			WVB120	WPC6S	UVB120	Y35P107S
	12	BY12-120	16,5	44,0	24,0	22,0	13,0							
	14	BY14-120*	16,5	44,0	24,0	22,0	15,0							
	16	BY16-120	16,5	48,0	28,0	22,0	17,0							
>120 - 150	10	BY10-150	19,0	50,0	30,0	24,0	10,5	10				WPC6S	UVB150	Y35P107S
	12	BY12-150	19,0	50,0	30,0	24,0	13,0							
	14	BY14-150*	19,0	50,0	30,0	24,0	15,0							
	16	BY16-150	19,0	50,0	30,0	24,0	17,0							
>150 - 185	12	BY12-185	21,0	50,0	36,0	28,0	13,0	10				WPC6S	UVB185	Y35P107S
	14	BY14-185*	21,0	50,0	36,0	28,0	15,0							
	16	BY16-185	21,0	50,0	36,0	28,0	17,0							
>185 - 240	12	BY12-240	23,5	56,0	38,0	32,0	13,0	10				WPC6S	UVB240	Y35P107S
	14	BY14-240*	23,5	56,0	38,0	32,0	15,0							
	16	BY16-240	23,5	56,0	38,0	32,0	17,0							

* Not included in DIN 46234
Other stud hole, on request.
N= Nest die, I= Indentor