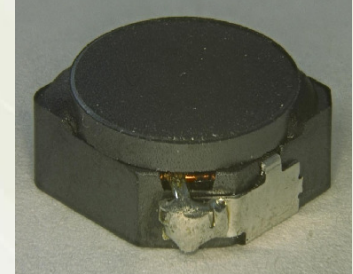


Power Inductor CDMPIH Series



■ Features

- ◎ Magnetically shielded construction.
- ◎ Storage temperature range: -40°C~+105°C.
- ◎ Operating temperature range: -40°C~+125°C (including coil's self-heat).
- ◎ RoHS Compliance.

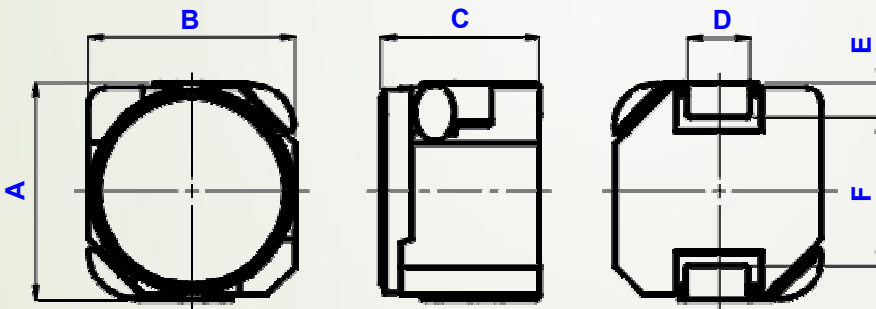


■ Applications

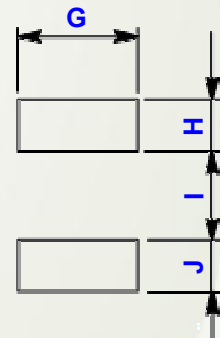
Ideally used in Car navigation, automobile's MPV equipment and D-Amp., etc.

■ Shapes and Dimensions/Recommended Land Patterns(mm)

◆ Dimensions



◆ Land pattern



Type name	A Max.	B Max.	C Max.	D	E	F	G	H	I	J
CDMPIH60D48/T125	6.6	6.2	5.0	1.8	1.0	4.3	2.2	1.8	3.6	1.8
CDMPIH75D43/T125	8.1	7.7	4.5	2.1	1.5	5.0	3.15	3.3	1.8	2.8
CDMPIH10D48/T125	10.7	10.3	5.0	3.4	1.6	7.2	3.95	4.2	1.5	3.5

Power Inductor CDMPIH Series



■ Electrical Characteristics specification.

◆ CDMPIH60D48/T125

Sumida P/N	Inductance (μ H) at 100KHz	D.C.R. (m Ω) at 20°C	Saturation Current (A) ※1		Temperature Rise Current (A) ※2
			(at 20°C)	(at 125°C)	
CDMPIH60D48T125NP-3R9PC	3.9 \pm 25%	33(27)	4.1	3.4	3.5
CDMPIH60D48T125NP-6R2PC	6.2 \pm 25%	41(33)	3.2	2.6	3.2
CDMPIH60D48T125NP-100MC	10 \pm 20%	58(46)	2.5	2.1	2.5
CDMPIH60D48T125NP-150MC	15 \pm 20%	89(71)	2.1	1.7	1.9
CDMPIH60D48T125NP-220MC	22 \pm 20%	140(112)	1.7	1.4	1.5
CDMPIH60D48T125NP-330MC	33 \pm 20%	208(116)	1.4	1.1	1.2
CDMPIH60D48T125NP-470MC	47 \pm 20%	255(204)	1.20	0.95	1.15
CDMPIH60D48T125NP-680MC	68 \pm 20%	3.2(242)	0.95	0.80	1.05
CDMPIH60D48T125NP-101MC	100 \pm 20%	460(368)	0.80	0.65	0.85

◆ CDMPIH75D43/T125

Sumida P/N	Inductance (μ H) at 100KHz	D.C.R. (m Ω) at 20°C	Saturation Current (A) ※1		Temperature Rise Current (A) ※2
			(at 20°C)	(at 125°C)	
CDMPIH75D43T125NP-4R7PC	4.7 \pm 25%	28(22)	4.4	3.5	3.6
CDMPIH75D43T125NP-6R8PC	6.8 \pm 25%	43(34)	3.7	2.9	2.8
CDMPIH75D43T125NP-100MC	10 \pm 20%	52(42)	3.1	2.4	2.6
CDMPIH75D43T125NP-150MC	15 \pm 20%	65(53)	2.5	1.9	2.4
CDMPIH75D43T125NP-220MC	22 \pm 20%	79(63)	2.1	1.6	2.2
CDMPIH75D43T125NP-330MC	33 \pm 20%	143(114)	1.7	1.3	1.5
CDMPIH75D43T125NP-470MC	47 \pm 20%	210(168)	1.4	1.1	1.2
CDMPIH75D43T125NP-680MC	68 \pm 20%	315(253)	1.2	0.9	1.0
CDMPIH75D43T125NP-101MC	100 \pm 20%	390(315)	1.00	0.75	0.80
CDMPIH75D43T125NP-151MC	150 \pm 20%	585(470)	0.80	0.60	0.65
CDMPIH75D43T125NP-221MC	220 \pm 20%	1005(805)	0.65	0.50	0.50

Power Inductor CDMPIH Series



■ Electrical Characteristics specification.

◆ CDMPIH10D48/T125

Sumida P/N	Inductance (μ H) at 100KHz	D.C.R. (m Ω) at 20°C	Saturation Current (A) ※1		Temperature Rise Current (A) ※2
			(at 20°C)	(at 125°C)	
CDMPIH10D48T125NP-4R3PC	4.3 \pm 25%	18.5(15.0)	7.4	5.7	5.5
CDMPIH10D48T125NP-5R6PC	5.6 \pm 25%	24.0(19.0)	6.5	5.0	4.8
CDMPIH10D48T125NP-7R5PC	7.5 \pm 25%	27.5(22.0)	5.6	4.4	4.4
CDMPIH10D48T125NP-110MC	11 \pm 20%	36(29)	4.7	3.6	4.0
CDMPIH10D48T125NP-220MC	22 \pm 20%	64(52)	3.3	2.6	3.4
CDMPIH10D48T125NP-330MC	33 \pm 20%	103(83)	2.7	2.1	2.2
CDMPIH10D48T125NP-470MC	47 \pm 20%	139(112)	2.25	1.75	1.70
CDMPIH10D48T125NP-680MC	68 \pm 20%	214(172)	1.85	1.40	1.40
CDMPIH10D48T125NP-101MC	100 \pm 20%	275(220)	1.55	1.20	1.25

※1、 Saturation Current: This indicates the value of D.C. current when the inductance decreases to 65% of its nominal value.

※2、 Temperature Rise Current: The actual current when temperature of coil becomes $\Delta T=40^{\circ}\text{C}$. ($T_a=20^{\circ}\text{C}$)

For More Information

Hong Kong

Tel.+852-2880-6688
FAX.+852-2565-9600

Tokyo

Tel.+81-3-5202-7112
FAX.+81-3-5202-7105

Chicago

Tel.+1-847-545-6700
FAX. +1-847-545-6720

Shanghai

Tel.+86-021-5836-3299
FAX.+86-021-5836-3266

Seoul

Tel.+82-2-6237-0777
FAX.+82-2-6237-0778

Obernzell

Tel.+49-8591-937-0
FAX. +49-8591-937-103

Shenzhen

Tel.+86-755-8291-0228
FAX.+86-755-8291-0338

Singapore

Tel.+65-6296-3388
FAX.+65-6296-3390

Neumarkt

Tel.+49-9181-4509-110
FAX. +49-9181-4509-310

Taipei

Tel.+886-2-8751-2737
FAX.+886-2-8751-2738

San Jose

Tel.+1-408-321-9660
FAX.+1-408-321-9308