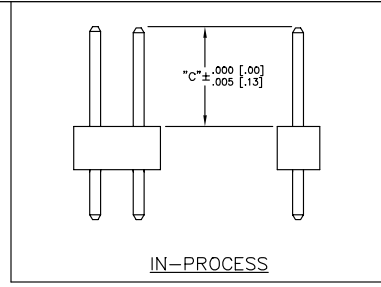


REVISION AJ

- NOTES:
1. Ⓢ REPRESENTS A CRITICAL DIMENSION FOR STATISTICAL PROCESS CONTROL USE.
 2. ALL DIMENSIONS IN BRACKETS [] TO BE MILLIMETERS.
 3. TUBE POSITIONS -05 THRU -36 ONLY; POSITIONS -02 THRU -04 TO BE LAYER PACKAGED.
 4. .020 [.51] MAX CUT FLASH, CUT FLASH TO BE IN A NON-CRITICAL AREA LOCATED BETWEEN BODIES.



DIMENSIONS ARE IN INCHES		UNLESS OTHERWISE NOTED		TOLERANCES ARE:	TITLE: HW BOARD TO BOARD ASSEMBLY	DWG NO: HW-XX-XX-X-XXX-SM-X-XXX
ONE PLACE DECIMALS ± .1 [3]	THREE PLACE DECIMALS ± .005 [.13]	ANGLES ± 2°			SHEET 1 OF 1	
TWO PLACE DECIMALS ± .01 [.3]	FOUR PLACE DECIMALS ± .0020 [.051]					

HW-XX-XX-XX-X-XXX-SM-X-XXX

NO. OF POSITIONS -02 THRU -36

LEAD STYLE (SEE TABLE 1)

PLATING SPEC.

- T: TIN -SPECIFY -T IN TERMINAL SUFFIX -XX
- S: SELECTIVE -SPECIFY -S IN TERMINAL SUFFIX -XX
- G: GOLD -SPECIFY -G IN TERMINAL SUFFIX -XX
- L: SELECTIVE TIN/LEAD -SPECIFY -L IN TERMINAL SUFFIX -XX
- O: GOLD FLASHED PALLADIUM NICKEL -SPECIFY -O IN TERMINAL SUFFIX -XX
- H: HEAVY GOLD -SPECIFY -H IN TERMINAL SUFFIX -XX
- F: FLASH GOLD -SPECIFY -F IN TERMINAL SUFFIX -XX
- M: MATE TIN -SPECIFY -M IN TERMINAL SUFFIX -XX
- SM: SELECTIVE -SPECIFY -SM IN TERMINAL SUFFIX -XX
- LM: SELECTIVE -SPECIFY -LM IN TERMINAL SUFFIX -XX
- FL: FLASH GOLD -SPECIFY -FL IN TERMINAL SUFFIX -XX

BOARD SPACE "A" = .XXX (SEE FIG 1 & TABLE 1) MAX = C + .150 SURFACE MOUNT

ROW OPTION (USE RTSM-50-DVU FOR BOTTOM INSULATOR) * (USE HTSW-XX-S-LCP FOR TOP INSULATOR)

*S: SINGLE ROW (USE TSM-XX-S BODY FOR BOTTOM INSULATOR) * (USE HTSM-XX-S-LCP FOR TOP INSULATOR)

OPTION #1 POLARIZED POSITION SPECIFY OMITTED PIN

OPTION #2 (LC: LOCKING CLIP (SEE FIG. 1)) (-S USE TSM-50-SV BODY) (USE LC-08-TM-02) (-A: ALIGNMENT PIN (SEE FIG. 2)) (-S: 2 - 3 POSITIONS USE TSM-XX-SV-A, MUST BE MOLDED TO POSITION) (-A: 40 POSITIONS USE TSM-XX-SV-00) (-D: FOR MOLDED TO POSITION, USE RTSM-50-DVU-XX BODY, AVAILABLE ON POS -02 THRU -36) (-D: FOR STAKED, USE RTSM-50-DVU BODY, 3 POS MIN) LEAVE BLANK FOR NO HOLD DOWN OPTION (-D USE RTSM-50-DVU /SEE FIG. 1/ CAN BE CUT TO POSITION) (-S USE TSM-50-SV /SEE FIG. 1/ CAN BE CUT TO POSITION) -TR: TAPS & REEL (27 MAX POSITIONS) (MAX HEIGHT: .0875)

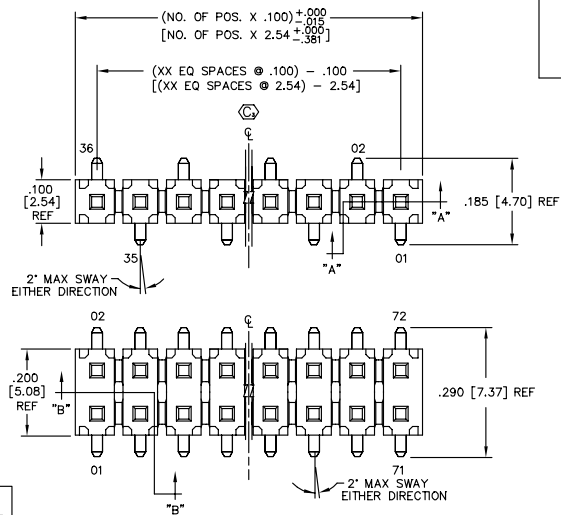
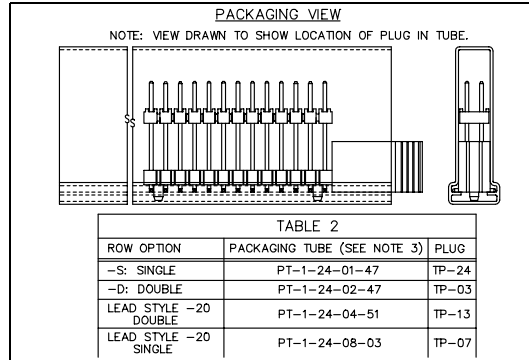
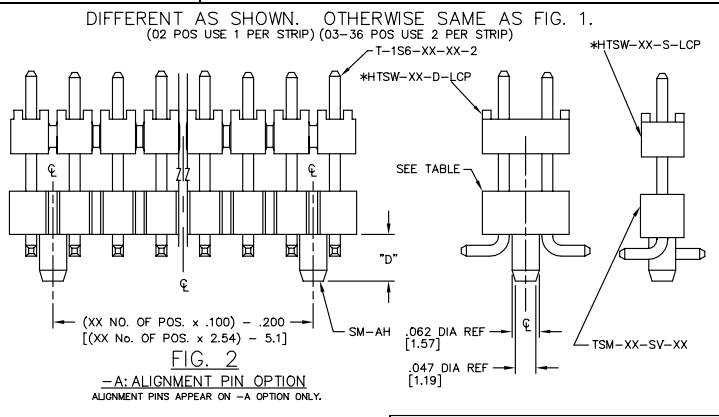
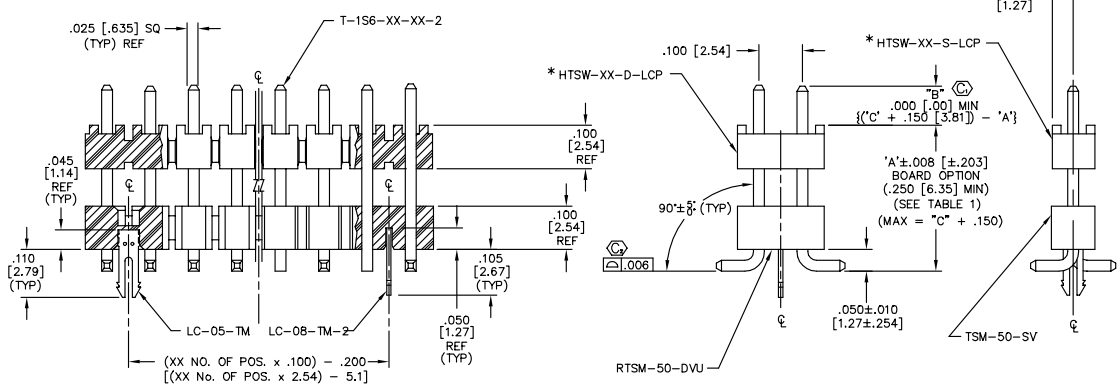


TABLE 1

LEAD STYLE	TERMINAL	OVERALL LENGTH	"A" WHEN "B" IS .090 [2.29]	"C"
-08	T-1S6-08-XX-2	.530 [13.46]	.375 [9.53]	.315 [8.00]
-09	T-1S6-09-XX-2	.730 [18.54]	.575 [14.61]	.515 [13.08]
-10	T-1S6-10-XX-2	.830 [21.08]	.675 [17.15]	.615 [15.62]
-11	T-1S6-11-XX-2	.930 [23.62]	.775 [19.69]	.715 [18.61]
-12	T-1S6-12-XX-2	1.030 [26.16]	.875 [22.23]	.815 [20.70]
-15	T-1S6-15-XX-2	.630 [16.00]	.475 [12.07]	.415 [10.54]
-16	T-1S6-16-XX-2	.445 [11.30]	.290 [7.37]	.230 [5.84]
-17	T-1S6-17-XX-2	.480 [12.19]	.325 [8.26]	.265 [6.73]
-20	T-1S6-20-XX-2	1.130 [28.70]	.975 [24.77]	.915 [23.24]



DO NOT SCALE FROM THIS PRINT



PROPRIETARY NOTE

THIS DOCUMENT CONTAINS PROPRIETARY INFORMATION AND IS THE PROPERTY OF SAMTEC INC. THIS DRAWING IS APPROVED OR TRANSMITTED TO OTHER PERSONS OR TO OTHER COMPANIES FOR ANY PURPOSES IS STRICTLY PROHIBITED BY SAMTEC INC.

SECTION "B-B" DOUBLE ROW SHOWN

SECTION "A-A" SINGLE ROW SHOWN

FIG. 1 LOCKING CLIP OPTION SHOWN CLIPS N/A WITH -A OPTION.

TABLE 3

	"D"	BODY
MOLDED	.100 [2.54] REF	RTSM-50-DVU-XX TSM-50-SV-A TSM-XX-SV-XX
STAKED	.100 ± .005 [2.45 ± .13]	RTSM-50-DVU

MISC. UK TO HWAK-T-SM

samtec

520 PARK EAST BLVD., NEW ALBANY, INDIANA 47150
PHONE (812) 344-4733 P.O. BOX 1147
CODE 55322

MADE BY GARY PURVIS 3-12-93

CHECKED BY ECKERT PAE

HW-XX-XX-X-XXX-SM-X-XXX SHEET 1 OF 1