

DESIGNED & DIMENSIONED
IN MILLIMETERS [INCHES]

DO NOT
SCALE FROM
THIS PRINT

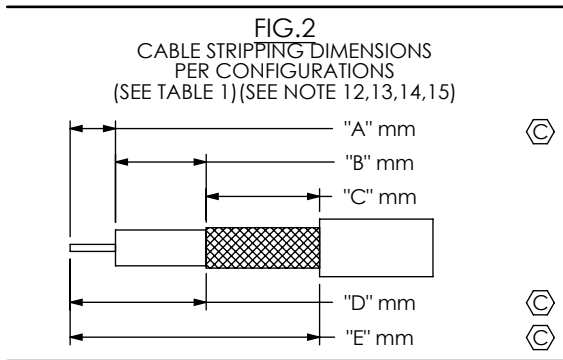


TABLE 1

STYLE	CABLE CUT LENGTH	HI POT
	SUBTRACTOR	DCV
-72SPX	7.3 [0.29]	1000
-72RPX	2.0 [0.08]	1000
-74SPX	10.3 [0.41]	1000
-74BJX	13.4 [0.53]	1000
-77SPX	7.5 [0.29]	1000
-77RPX	2.9 [0.11]	1000
*-D4SPX	10.3 [0.41]	1000
*-78SPX	15.7 [0.62]	1000
*-79SPX	8.7 [0.34]	1000
-SING	0.0 [0.00]	1000
-XXXXXX	0.0 [0.00]	1000

NOTES:

- ③ REPRESENTS A CRITICAL DIMENSION
- CABLE CUT LENGTH:
= (LENGTH: XXXX) - (SUBTRACTOR FOR END 1) - (SUBTRACTOR FOR END 2)
③ (SEE TABLE 1 FOR SUBTRACTORS)
- ASSEMBLY TO BE 100% TESTED FOR OPENS & SHORTS
- ASSEMBLY TO BE 100% HI-POT TESTED PER TABLE 1
- AFTER FINAL ELECTRICAL TEST, LABEL EACH CABLE ASSEMBLY WITH 1 LABEL-ET
③
- CRITICALS ON CONNECTOR PRINTS TO BE CHECKED IN PROCESS.
- FINISHED ASSEMBLIES TO BE PACKAGED PER PACKAGING STANDARD CO-HD-WI-3033-M.
-LOCKWASHERS, NUTS, AND GASKETS TO BE SHIPPED UNASSEMBLED.
- CABLE STOCKED IN INCHES, 1 INCH = 25.4 MILLIMETERS
- CABLE LENGTHS LONGER THAN 500 MILLIMETERS ARE NOT SUPPORTED BY S.I. TEST DATA
- MINIMUM BEND RADIUS FOR RG179 = 10.2 [.40].
- FOR SING ENDED OR STRIPPED AND TINNED ASSEMBLIES: MAKE A DOUBLE ENDED ASSEMBLY AT TWICE THE CABLE LENGTH AND TEST BEFORE CUTTING ASSEMBLY IN HALF.
- DIM "A", "B", AND "C" HAVE A MINIMUM VALUE OF 0.0mm & A MAXIMUM VALUE OF 9.9mm
- PRODUCTION OF STRIP AND TIN FOR CENTER DIELECTIC USE: A
- PRODUCTION OF STRIP AND TIN FOR SHIELD USE: D=A+B
- PRODUCTION OF STRIP AND TIN FOR JACKET USE: E=A+B+C
- FOR -RA TO -RA, CONNECTOR SHOULD BOTH BE ORIENTED UP. (SEE SHEET 2, FIG. 4)

RF179-XXXXX-XXXXXX-XXXX

CABLE CALLOUT
179: CCA-179 (RG-179 COAXIAL CABLE)

- END 1 CONNECTOR
- 72SP: MCX7-P-C-XX-ST-CA3 (SEE SHEET 2)
 - 72RP: MCX7-P-C-XX-RA-CA3 (SEE SHEET 2)
 - 74SP: BNC7T-P-C-XX-ST-CA3 (SEE SHEET 2)
 - 74BJ: BNC7T-J-C-XX-ST-BH3 (SEE SHEET 2)
 - 77SP: SMB7H-P-C-XX-ST-CA3 (SEE SHEET 2)
 - 77RP: SMB7H-P-C-XX-RA-CA3 (SEE SHEET 2)
 - *-D4SP: BNC7T-P-C-XX-ST-CA3-D (SEE SHEET 3)
 - *-78SP: DIN7A-PP-C-XX-ST-CA8 (SEE SHEET 3)
 - *-79SP: MBNC7-P-C-XX-ST-CA8 (SEE SHEET 3)

- END 1 PLATING OPTION
- 1: GOLD ALL COMPONENTS
 - 2: GOLD / NICKEL COMBINATION
 - 3: ALTERNATE GOLD / NICKEL (SEE SHEET 2 FOR PLATING SPECIFICS)

* = NOT RELEASED FOR PRODUCTION

OVERALL CABLE LENGTH
MILLIMETERS OF CABLE
0100 MIN. (SEE NOTE 8 & 9)

- END 2 PLATING OPTION
- 1: GOLD ALL COMPONENTS
 - 2: GOLD / NICKEL COMBINATION
 - 3: ALTERNATE GOLD / NICKEL (LEAVE BLANK FOR -SING OR -XXXXXX END 2 PREPARATION)

- END 2 CONNECTOR OR PREPARATION
- 72SP: MCX7-P-C-XX-ST-CA3 (SEE SHEET 2)
 - 72RP: MCX7-P-C-XX-RA-CA3 (SEE SHEET 2)
 - 74SP: BNC7T-P-C-XX-ST-CA3 (SEE SHEET 2)
 - 74BJ: BNC7T-J-C-XX-ST-BH3 (SEE SHEET 2)
 - 77SP: SMB7H-P-C-XX-ST-CA3 (SEE SHEET 2)
 - 77RP: SMB7H-P-C-XX-RA-CA3 (SEE SHEET 2)
 - *-D4SP: BNC7T-P-C-XX-ST-CA3-D (SEE SHEET 3)
 - *-78SP: DIN7A-PP-C-XX-ST-CA8 (SEE SHEET 3)
 - *-79SP: MBNC7-P-C-XX-ST-CA8 (SEE SHEET 3)
 - SING: SINGLE ENDED (ONE END ONLY, SEE NOTE 11)
 - XXXXXX: STRIPPED AND TINNED (THIS END ONLY- SEE NOTE 11-15, SHEET 2, FIG. 3)

(SEE FIG. 2) "C" FORMAT: X.X
(SEE FIG. 2) "B" FORMAT: X.X
(SEE FIG. 2) "A" FORMAT: X.X

DO NOT LEAVE ANY SPACE BLANK,
EACH MUST CONTAIN A
NUMERIC CHARACTER 0 THRU 9.

TABLE 2: FINAL ASSEMBLY LENGTH TOLERANCE

LENGTH	TOLERANCE
0100-0200 [3.92-7.87]	+3.0 [.12]/-0.0 [0.0]
0200-0500 [7.87-19.69]	+5.0 [.20]/-0.0 [0.0]
0500-1100 [19.69-43.30]	+10.0 [.40]/-0.0 [0.0]
>1100 [43.30]	± 1%

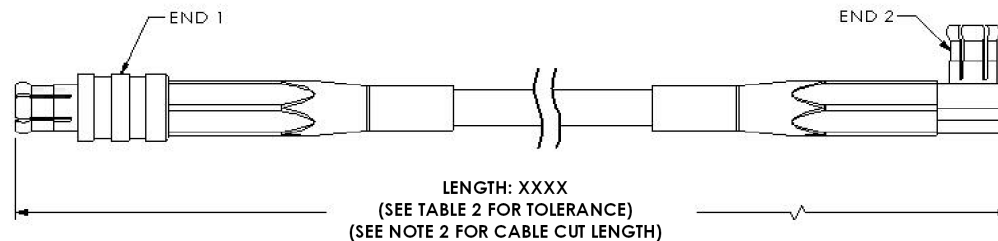


FIG. 1
RF179-72SPX-72RPX-XXXX SHOWN
CABLE STRIPPING DIMENSIONS
PER END 1 AND END 2 ASSEMBLY PRINTS
OR STRIPPED AND TINNED
(SEE NOTES 11-15, SHEET 2, FIG. 3)

THIS PRODUCT MANUFACTURED
WITH LEAD-FREE PROCESSING

F:\DWG\MISC\MKTG\RF179-XXXXX-XXXXXX-XXXX-MKT.SLDDRW

UNLESS OTHERWISE SPECIFIED, DIMENSIONS ARE IN MILLIMETERS [INCHES]. TOLERANCES ARE: DECIMALS ANGLES .X: ±0.3 [.01] 2° .XX: ±0.13 [.005] .XXX: ±0.051 [.0020]	PROPRIETARY NOTE THIS DOCUMENT CONTAINS INFORMATION CONFIDENTIAL AND PROPRIETARY TO SAMTEC, INC. AND SHALL NOT BE REPRODUCED OR TRANSFERRED TO OTHER DOCUMENTS OR DISCLOSED TO OTHERS OR USED FOR ANY PURPOSE OTHER THAN THAT WHICH IT WAS OBTAINED WITHOUT THE EXPRESSED WRITTEN CONSENT OF SAMTEC, INC.	 520 PARK EAST BLVD. NEW ALBANY, IN 47150 PHONE: 812-944-6733 FAX: 812-948-5047 e-Mail: info@SAMTEC.com code 55322
MATERIAL: DO NOT SCALE DRAWING SHEET SCALE: 2:1 SEE END 1 AND END 2 ASSEMBLY PRINTS	DESCRIPTION: RF179 CABLE ASSEMBLY DWG. NO. RF179-XXXXX-XXXXXX-XXXX BY: B. RAY 1-30-2007 SHEET 1 OF 3	

REVISION L

-72SP
(STRAIGHT PLUG)

(USE DRAWING No. MCX7-P-C-XX-ST-CA3 FOR ASSEMBLY INSTRUCTIONS)



PLATING OPTIONS

1: 30µ" MIN. GOLD CENTER CONTACT
3µ" MIN. GOLD OUTER CONTACT
3µ" MIN. GOLD REMAINING METAL PARTS
(END CONNECTOR P/N: MCX7-P-C-H-ST-CA3)

2: 30µ" MIN. GOLD CENTER CONTACT
3µ" MIN. GOLD OUTER CONTACT
100µ" MIN. NICKEL REMAINING METAL PARTS
(END CONNECTOR P/N: MCX7-P-C-HN-ST-CA3)

NOTE: ALL CRITICAL DIMENSIONS ON MCX7-P-C-XX-ST-CA3 THAT APPLY MUST BE VERIFIED.

-72RP
(RIGHT ANGLE PLUG)

(USE DRAWING No. MCX7-P-C-XX-RA-CA3 FOR ASSEMBLY INSTRUCTIONS)



PLATING OPTIONS

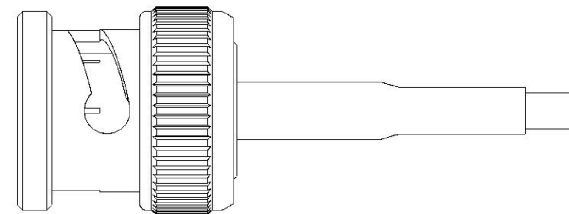
1: 30µ" MIN. GOLD CENTER CONTACT
3µ" MIN. GOLD OUTER CONTACT
3µ" MIN. GOLD REMAINING METAL PARTS
(END CONNECTOR P/N: MCX7-P-C-H-RA-CA3)

2: 30µ" MIN. GOLD CENTER CONTACT
3µ" MIN. GOLD OUTER CONTACT
100µ" MIN. NICKEL REMAINING METAL PARTS
(END CONNECTOR P/N: MCX7-P-C-HN-RA-CA3)

NOTE: ALL CRITICAL DIMENSIONS ON MCX7-P-C-XX-RA-CA3 THAT APPLY MUST BE VERIFIED.

-74SP
(STRAIGHT PLUG)

(USE DRAWING No. BNC7T-P-C-XX-ST-CA3 FOR ASSEMBLY INSTRUCTIONS)



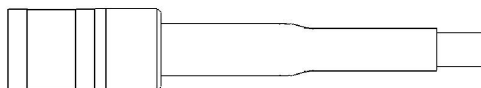
PLATING

3: 10µ" MIN. GOLD CENTER CONTACT
100µ" MIN. NICKEL OUTER CONTACT
100µ" MIN. NICKEL REMAINING METAL PARTS
(END CONNECTOR P/N: BNC7T-P-C-MN-ST-CA3)

NOTE: ALL CRITICAL DIMENSIONS ON BNC7T-P-C-XX-ST-CA3 THAT APPLY MUST BE VERIFIED.

-77SP
(STRAIGHT PLUG)

(USE DRAWING No. SMB7H-P-C-XX-ST-CA3 FOR ASSEMBLY INSTRUCTIONS)



PLATING OPTIONS

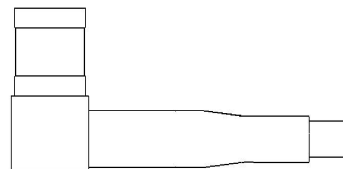
1: 30µ" MIN. GOLD CENTER CONTACT
3µ" MIN. GOLD OUTER CONTACT
3µ" MIN. GOLD REMAINING METAL PARTS
(END CONNECTOR P/N: SMB7H-P-C-H-ST-CA3)

2: 30µ" MIN. GOLD CENTER CONTACT
3µ" MIN. GOLD OUTER CONTACT
100µ" MIN. NICKEL REMAINING METAL PARTS
(END CONNECTOR P/N: SMB7H-P-C-HN-ST-CA3)

NOTE: ALL CRITICAL DIMENSIONS ON SMB7H-P-C-XX-ST-CA3 THAT APPLY MUST BE VERIFIED.

-77RP
(RIGHT ANGLE PLUG)

(USE DRAWING No. SMB7H-P-C-XX-RA-CA3 FOR ASSEMBLY INSTRUCTIONS)



PLATING OPTIONS

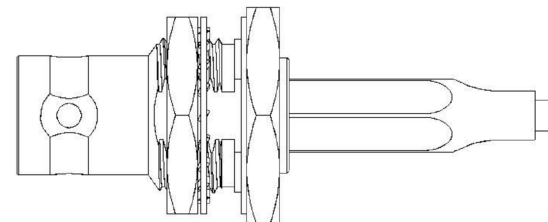
1: 30µ" MIN. GOLD CENTER CONTACT
3µ" MIN. GOLD OUTER CONTACT
3µ" MIN. GOLD REMAINING METAL PARTS
(END CONNECTOR P/N: SMB7H-P-C-H-RA-CA3)

2: 30µ" MIN. GOLD CENTER CONTACT
3µ" MIN. GOLD OUTER CONTACT
100µ" MIN. NICKEL REMAINING METAL PARTS
(END CONNECTOR P/N: SMB7H-P-C-HN-RA-CA3)

NOTE: ALL CRITICAL DIMENSIONS ON SMB7H-P-C-XX-RA-CA3 THAT APPLY MUST BE VERIFIED.

-74BJ
(STRAIGHT BULKHEAD JACK)

(USE DRAWING No. BNC7T-J-C-XX-ST-BH3 FOR ASSEMBLY INSTRUCTIONS)



PLATING OPTIONS

2: 30µ" MIN. GOLD CENTER CONTACT
100µ" MIN. NICKEL OUTER CONTACT
100µ" MIN. NICKEL REMAINING METAL PARTS
(END CONNECTOR P/N: BNC7T-J-C-HN-ST-BH3)

3: 10µ" MIN. GOLD CENTER CONTACT
100µ" MIN. NICKEL OUTER CONTACT
100µ" MIN. NICKEL REMAINING METAL PARTS
(END CONNECTOR P/N: BNC7T-J-C-MN-ST-BH3)

NOTE: ALL CRITICAL DIMENSIONS ON BNC7T-J-C-XX-ST-BH3 THAT APPLY MUST BE VERIFIED.

FIG. 3

RF179-72SPX-102148-XXXX SHOWN

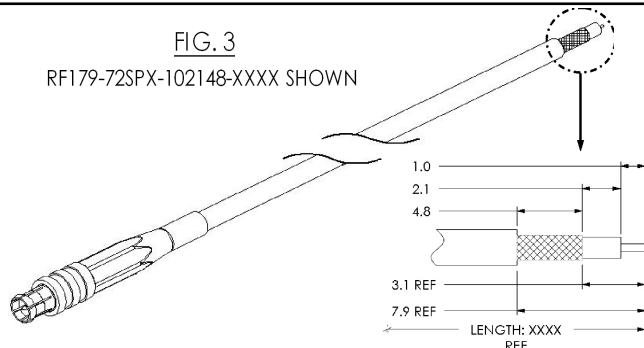
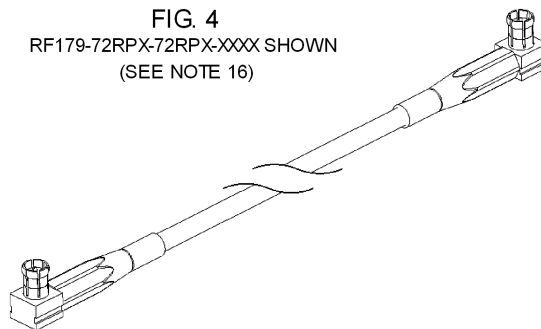


FIG. 4

RF179-72RPX-72RPX-XXXX SHOWN
(SEE NOTE 16)



F:\DWG\MISC\MKTG\RF179-XXXX-XXXX-XXXX-MKT.SLDDRW

PROPRIETARY NOTE

THIS DOCUMENT CONTAINS INFORMATION CONFIDENTIAL AND PROPRIETARY TO SAMTEC, INC. AND SHALL NOT BE REPRODUCED OR TRANSFERRED TO OTHER DOCUMENTS OR DISCLOSED TO OTHERS OR USED FOR ANY PURPOSE OTHER THAN THAT WHICH IT WAS OBTAINED WITHOUT THE EXPRESSED WRITTEN CONSENT OF SAMTEC, INC.

DO NOT SCALE DRAWING

SHEET SCALE: 1:1

samtec

520 PARK EAST BLVD, NEW ALBANY, IN 47150
PHONE: 812-944-6733 FAX: 812-948-5047
e-Mail: info@SAMTEC.com code 55322

DESCRIPTION:

RF179 CABLE ASSEMBLY

DWG. NO.

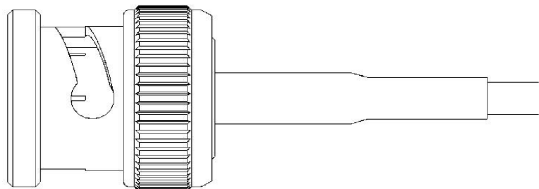
RF179-XXXXX-XXXXXX-XXXX

BY: B. RAY 1-30-2007

SHEET 2 OF 3

-D4SP
(DIE CAST STRAIGHT PLUG)

(USE DRAWING No. BNC7T-P-C-XX-ST-CA3-D FOR ASSEMBLY INSTRUCTIONS)



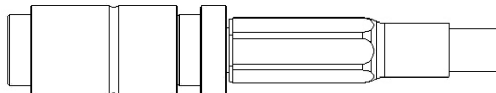
PLATING

- 3: 10µ" MIN. GOLD CENTER CONTACT
- 100µ" MIN. NICKEL OUTER CONTACT
- 100µ" MIN. NICKEL REMAINING METAL PARTS
(END CONNECTOR P/N: BNC7T-P-C-MN-ST-CA3-D)

NOTE: ALL CRITICAL DIMENSIONS ON BNC7T-P-C-XX-ST-CA3-D THAT APPLY MUST BE VERIFIED.

-78SP
(STRAIGHT PLUG)

(USE DRAWING No. DIN7A-PP-C-XX-ST-CA8 FOR ASSEMBLY INSTRUCTIONS)



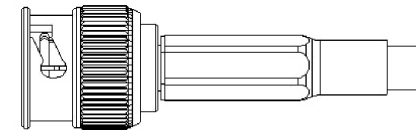
PLATING

- 4: 10µ" MIN. GOLD CENTER CONTACT
- 3µ" MIN. GOLD OUTER CONTACT
- 100µ" MIN. NICKEL REMAINING METAL PARTS
(END CONNECTOR P/N: DIN7A-PP-C-MF-ST-CA8)
- 5: 10µ" MIN. GOLD CENTER CONTACT
- 10µ" MIN. GOLD OUTER CONTACT
- 100µ" MIN. NICKEL REMAINING METAL PARTS
(END CONNECTOR P/N: DIN7A-PP-C-MM-ST-CA8)
- 6: 30µ" MIN. GOLD CENTER CONTACT
- 30µ" MIN. GOLD OUTER CONTACT
- 100µ" MIN. NICKEL REMAINING METAL PARTS
(END CONNECTOR P/N: DIN7A-PP-C-HH-ST-CA8)

NOTE: ALL CRITICAL DIMENSIONS ON DIN7A-PP-C-XX-ST-CA8 THAT APPLY MUST BE VERIFIED.

-79SP
(STRAIGHT PLUG)

(USE DRAWING No. MBNC7-P-C-XX-ST-CA8 FOR ASSEMBLY INSTRUCTIONS)



PLATING

- 2: 30µ" MIN. GOLD CENTER CONTACT
- 100µ" MIN. NICKEL OUTER CONTACT
- 100µ" MIN. NICKEL REMAINING METAL PARTS
(END CONNECTOR P/N: MBNC7-P-C-HN-ST-CA8)
- 3: 10µ" MIN. GOLD CENTER CONTACT
- 100µ" MIN. NICKEL OUTER CONTACT
- 100µ" MIN. NICKEL REMAINING METAL PARTS
(END CONNECTOR P/N: MBNC7-P-C-MN-ST-CA8)

NOTE: ALL CRITICAL DIMENSIONS ON MBNC7-P-C-XX-ST-CA8 THAT APPLY MUST BE VERIFIED.

PROPRIETARY NOTE

THIS DOCUMENT CONTAINS INFORMATION CONFIDENTIAL AND PROPRIETARY TO SAMTEC, INC. AND SHALL NOT BE REPRODUCED OR TRANSFERRED TO OTHER DOCUMENTS OR DISCLOSED TO OTHERS OR USED FOR ANY PURPOSE OTHER THAN THAT WHICH IT WAS OBTAINED WITHOUT THE EXPRESSED WRITTEN CONSENT OF SAMTEC, INC.

DO NOT SCALE DRAWING

SHEET SCALE: 1:1



520 PARK EAST BLVD, NEW ALBANY, IN 47150
PHONE: 812-944-6733 FAX: 812-948-5047
e-Mail info@SAMTEC.com code 55322

DESCRIPTION:
RF179 CABLE ASSEMBLY

DWG. NO.
RF179-XXXXX-XXXXXX-XXXX

BY: B. RAY 1-30-2007 SHEET 3 OF 3