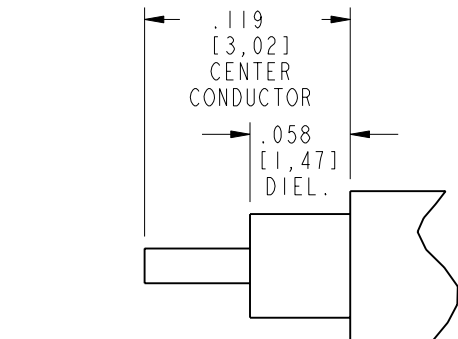
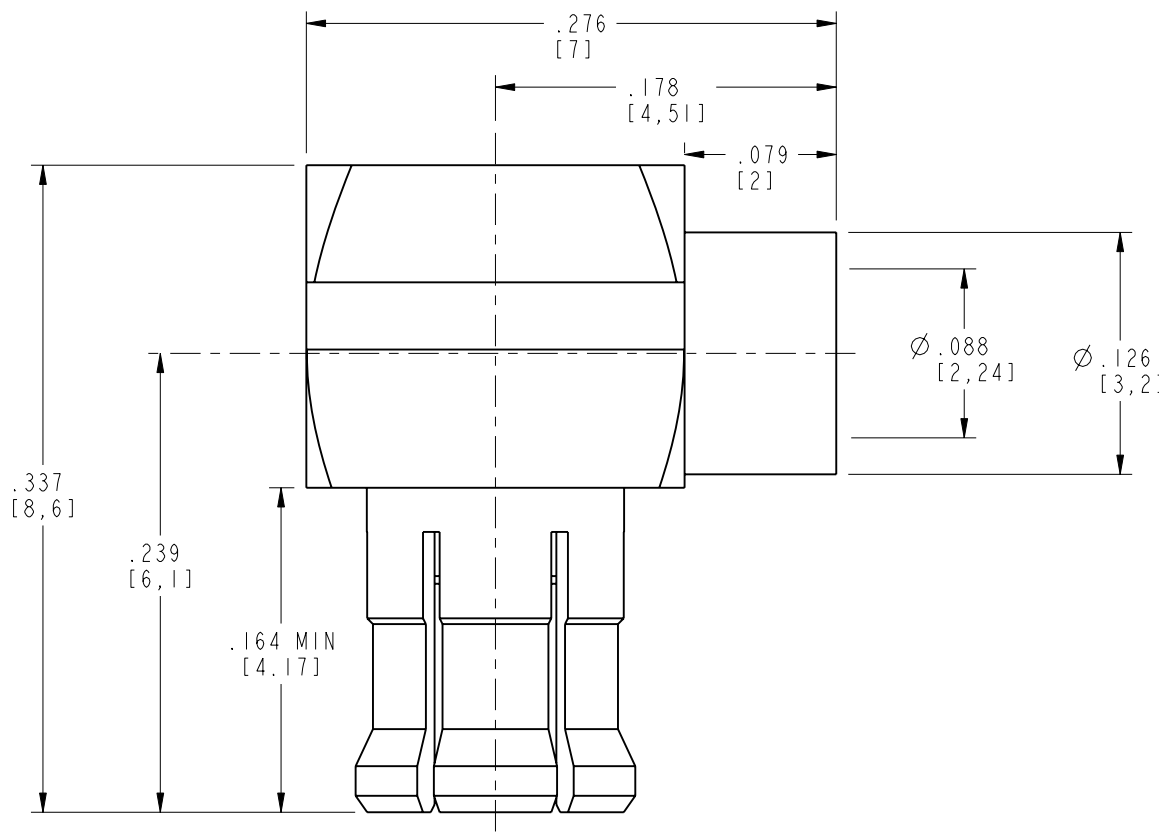
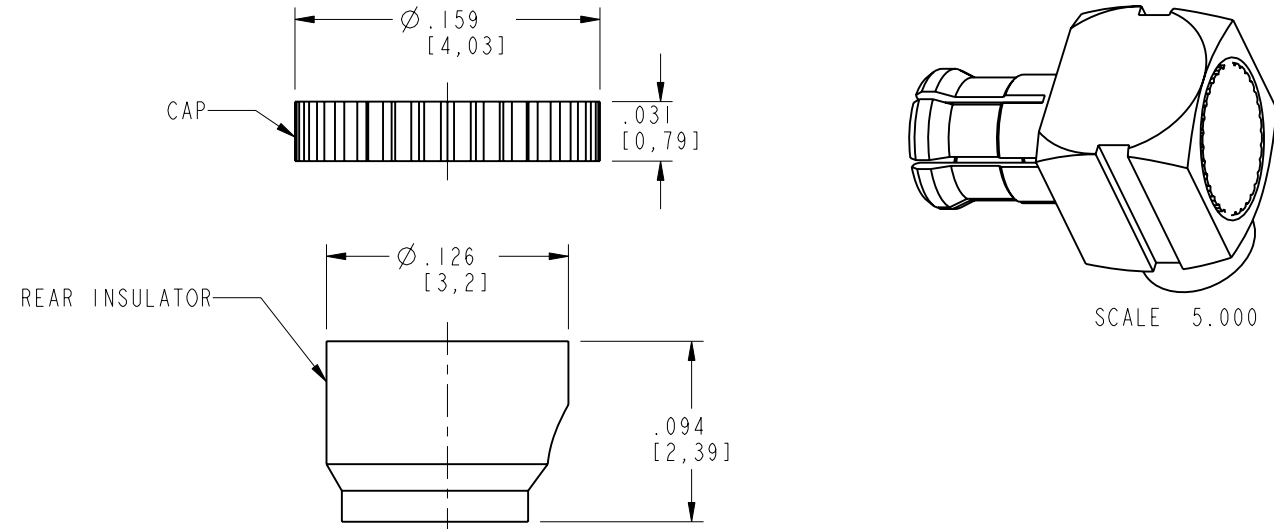
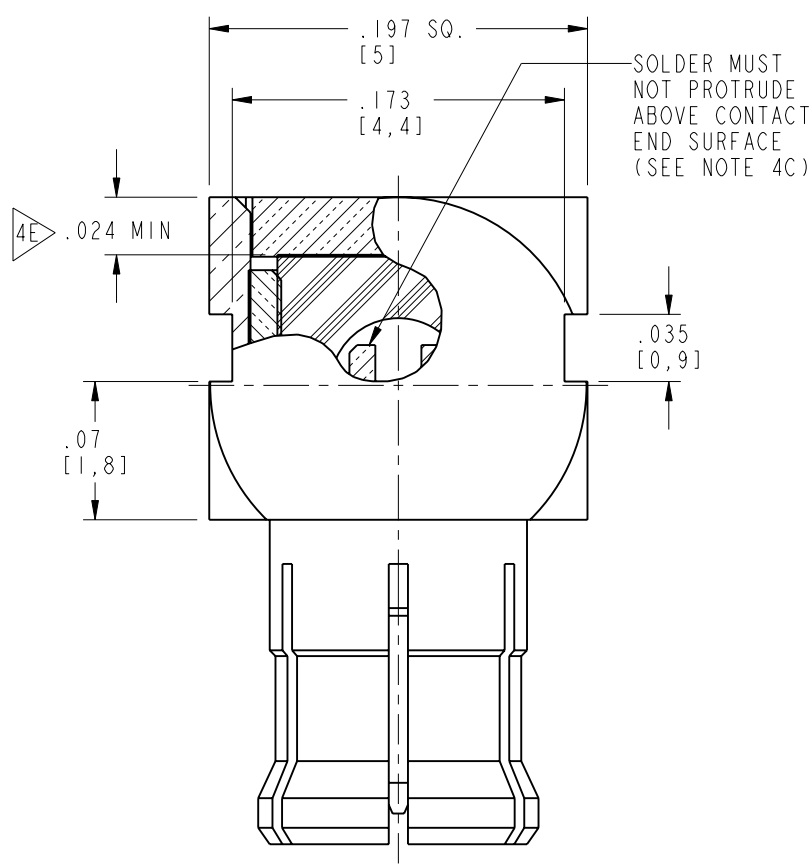


NOTES:

1. MATERIALS OF CONSTRUCTION:  
HOUSING = BRASS (QQ-B-626), GOLD PLATED (.000003 MIN THICK)  
BODY = BERYLLIUM COPPER, GOLD PLATED (.000003 MIN THICK)  
CONTACT PIN = BRASS (QQ-B-626), GOLD PLATED (.000030 MIN THICK)  
COVER = BRASS (QQ-B-613), GOLD PLATED (.000003 MIN THICK)  
INSULATOR = TEFLON PER MIL-P-19468  
INSULATOR = DELRIN, COLOR NATURAL
2. ELECTRICAL DATA:  
VSWR = 1.05 MAX TO 1 GHz  
1.30 MAX TO 6 GHz  
INSERTION LOSS = .05 dB MAX TO 1 GHz  
(MATED PAIR) = .15 dB MAX TO 6 GHz
3. CONTACT AND FRONT INSULATOR WITHSTANDS 2.3 LBS AXIAL FORCE  
IN BOTH DIRECTIONS BEFORE ASSEMBLING REAR INSULATOR AND CAP.
4. CABLE ASSEMBLY INSTRUCTIONS:
  - A. TRIM CABLE AS SHOWN
  - B. INSERT CABLE INTO BODY UNTIL IT BOTTOMS
  - C. SOLDER CABLE OUTER CONDUCTOR TO BODY
  - D. SOLDER CABLE CENTER CONDUCTOR TO CONTACT, THE SOLDER  
MUST NOT PROTRUDE ABOVE THE CENTER CONTACT END SURFACE
  - E. ORIENT REAR INSULATOR SLOT WITH CABLE DIELECTRIC AND INSERT TO DIMENSION SHOWN
  - F. INSERT CAP UNTIL FLUSH WITH SURFACE OF BODY, INSERTION TOOLING  
MUST ENSURE THAT CAP SURFACE IS PARALLEL TO BODY SURFACE
5. PACKAGING:
  - A. BULK PACK AS FOLLOWS:  
100 PCS (CONNECTORS) PER BAG,  
100 PCS (REAR INSULATOR) PER BAG  
100 PCS (CAP) PER BAG  
ALL 3 BAGS INTO 1 BAG
  - B. MARK BAG OR TAG "919-177P-71AX YYWW"



RECOMMENDED CABLE TRIM DIMENSIONS  
SCALE 9.000



## CUSTOMER OUTLINE DRAWING

ALL OTHER SHEETS ARE FOR INTERNAL USE ONLY

|   |   |  |                                  |  |                   |  |   |  |               |  |                              |  |               |
|---|---|--|----------------------------------|--|-------------------|--|---|--|---------------|--|------------------------------|--|---------------|
| UNLESS OTHERWISE SPECIFIED, DIMENSIONS ARE IN INCHES AND TOLERANCES ARE:<br>2 PLACE DECIMAL      3 PLACE DECIMAL      ANGLES<br>±.015 (0,381 mm)      ±.005 (0,127 mm)      ± 1°<br><br>NOTICE - These drawings, specifications, or other data (1) are, and remain the property of Amphenol Corp. (2) must be returned upon request; and (3) are confidential and not to be disclosed to any person other than those to whom they are given by Amphenol Corp. The furnishing of these drawings, specifications, or other data by Amphenol Corp., or to any other person to anyone for any purpose is not to be regarded by implication or otherwise in any manner licensing, granting rights or permitting such holder or any other person to manufacture, use or sell any product, process or design, patented or otherwise, that may in any way be related to or disclosed by said drawings, specifications, or other data. | MATERIAL                                      |  | DRAWN<br>MIKE HOYACK             |  | DATE<br>28-May-03 |  | TITLE<br>MCX R/A DIRECT<br>SOLDER PLUG, 75 OHM<br>FOR SR .086 |  |               | Amphenol RF<br>Danbury, CT, USA<br>Tainan, Taiwan<br>Shenzhen, China<br>www.amphenolrf.com |                              |  |               |
|   |   |  |                                  |  |                   |  |   |  |               |  |                              |  |               |
|   | REFERENCE                                     |  | ENGINEER<br>MIKE HOYACK          |  | DATE<br>07-Apr-03 |  |   |  |               |  |                              |  | SCALE: 10.0:1 |
|   | EAR# 927<br>GEN# ASSYM18-MCX<br>615X-1914-100 |  | APPROVED<br>O. BARTHELMES        |  | DATE<br>30-May-03 |  |   |  |               |  |                              |  |               |
|   |   |  | CAD FILE<br>1:\MCX\919-177P-71AX |  |                   |  | CODE ID<br>74868  |  | DWG SIZE<br>B |  | DRAWING NO.<br>919-177P-71AX |  | REV<br>B      |