

Filtered Terminal Blocks

Featuring Integrated Solid Pin Design

NEW...

Introducing the MAGNUM® standard F38 Series and custom filtered terminal blocks for use in telecommunication, industrial control, defense and medical industries.

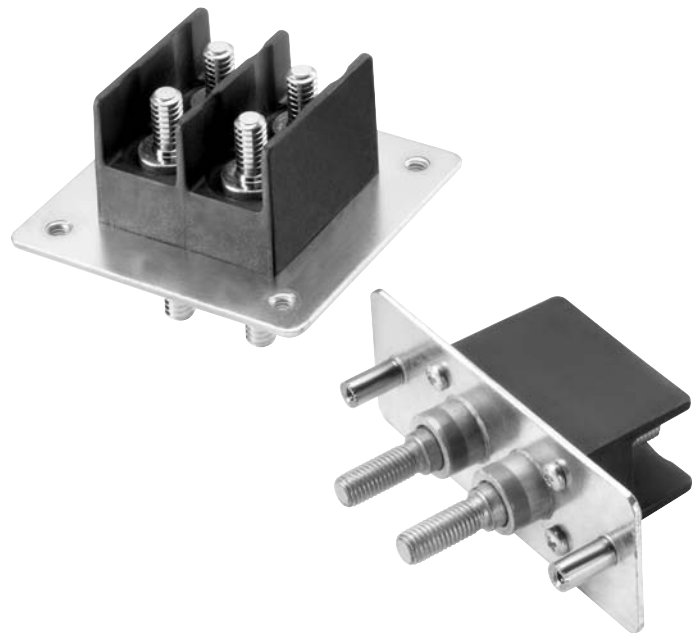
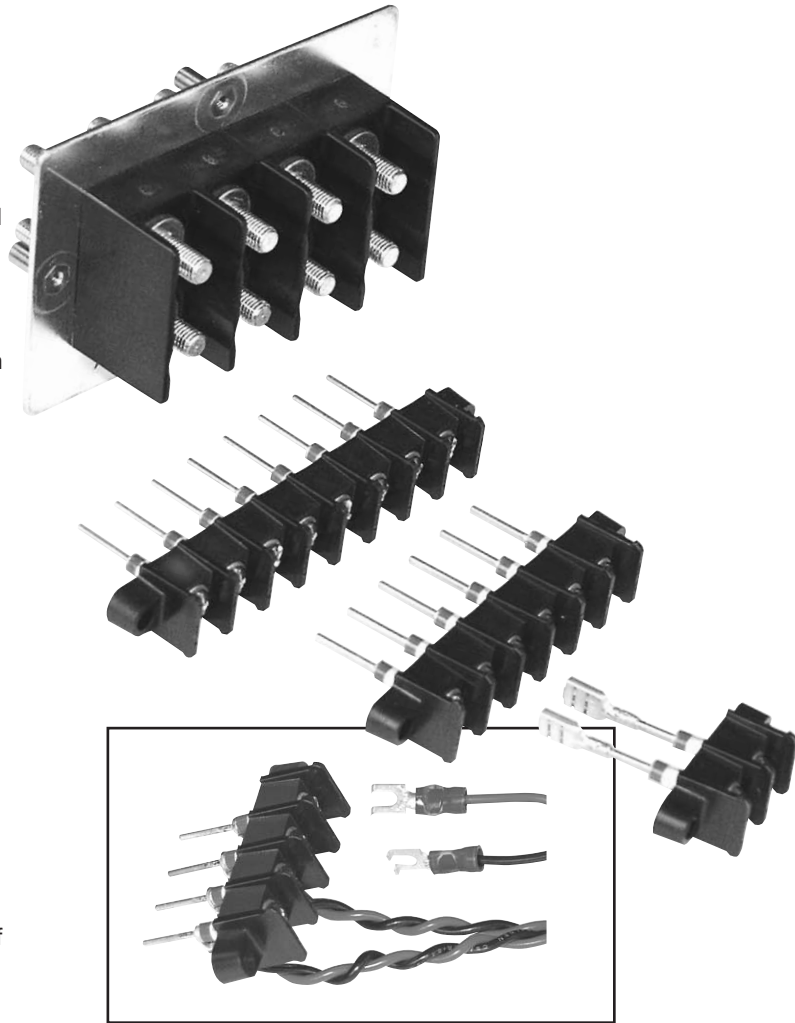
MAGNUM® has been manufacturing terminal blocks since 1970 for use in industrial, power supply, instrumentation and power distribution applications. Corry Micronics, Inc. has been producing feed thru capacitors and RFI (Radio Frequency Interference) filters since 1970 for defense, aerospace, wireless and CATV industries. In partnership with Corry Micronics, Inc., MAGNUM® now combines the value and experience of both companies to provide excellent technical resources and offer products that meet your EMI and RFI requirements.

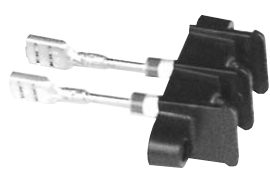
APPLICATIONS

- Cellular base stations
- Telecommunication switching networks
- Hi-reliability radar & transmission systems
- Industrial controls
- Power supplies
- UPS
- Instrumentation
- Medical equipment

AVAILABLE PRODUCTS

- European series blocks with ratings of 15A.
- Single row barrier blocks with ratings of 30A and C and Pi filter options from 1,000 pF to 5,000 pF.
- Dual row barrier blocks with ratings of up to 175A and various filtering options in 0.625" and 0.750" stud-to-stud spacing to accommodate industry standard two hole compression lugs.
- Two tier barrier blocks with ratings of 200A and various filtering options. This design incorporates a removable filtered printed circuit board for field replacement with a solid bus bar and stainless steel studs for higher torque performance.
- Many standard and custom options are available to meet your design requirements.





F38 Series Filtered Terminal Blocks

SPECIFICATIONS

- Ratings:** 30A, 240VAC, 300VDC.
- Center Spacing:** 0.437" or 7/16" (11.10mm)
- Wire Size:** # 10-22 AWG CU
- Screw Size:** # 8-32 (# 6-32 available, consult factory)
- Torque Rating:** 15 in-lb.
- Operating Temperature:** -55°C to +105°C.
- Housing Material:** 94VO Thermoplastic.
- Molded Material:** Black, UL rated 94VO thermoplastic.
- Terminal Material:** Brass, Tin-Plated
- Capacitance:** 1,000 pF to 5,000 pF in either C or Pi Schematic
- Dielectric Withstanding Voltage:** 1000 VAC; 1700VDC
- D.C. Resistance:** 0.01 ohms max.
- Agency Information:** UL/CSA, CE Certified

FEATURES

- Rugged integrated construction of filtering elements around a solid brass pin provides excellent EMI/RFI filtering
- Filter element provides high insertion loss for EMI/RFI filtering of AC and DC power and control lines
- 2 to 8 terminals standard – up to 16 poles available
- Cost-effective EMI solution for industrial interconnection filtering
- Termination options are straight lead, male or female quick connect
- Custom and special options available including:
 - Different capacitance values on each position
 - Wire assemblies added to pins

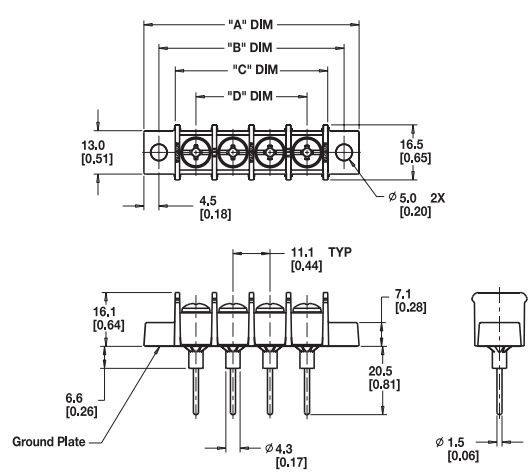
# of Poles	A Front Mount	A Rear Mount	B	C	D
2	1.67	1.88	1.31	0.93	0.44
3	2.10	2.32	1.75	1.37	0.88
4	2.54	2.76	2.19	1.81	1.31
5	2.98	3.19	2.63	2.25	1.75
6	3.41	3.63	3.06	2.68	2.19
7	3.85	4.07	3.50	3.12	2.62
8	4.29	4.51	3.94	3.56	3.06

Insertion Loss for 2,500 pF Pi Schematic Typical Insertion Loss (dB) in 50 Ohm Circuit	
30MHz	.42 dB
50 MHz	.45 dB
100 MHz	.50 dB
300 MHz	.68 dB
1000 MHz	.70 dB

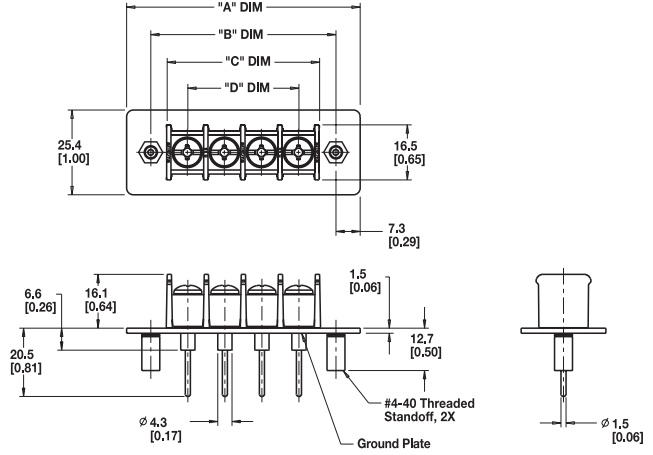
* Note: For other capacitance insertion loss, consult factory.

* Note: In inches. Available up to 16 poles. Consult factory.

O - Front Panel Mount



I - Rear Panel Mount



Part Numbering System

Series	Terminal Style	Mounting	# of Poles	Screw Options	Filter Options	Capacitance
F38						
	<ul style="list-style-type: none"> 0 - straight lead 1 - 0.187" quick connect (male) 2 - 0.187" quick connect (male) 3 - 0.250" quick connect (male) 4 - 0.250" quick connect (female) 	<ul style="list-style-type: none"> 0 - front panel mount with mount ends 1 - rear panel mount with #4-40 threaded inserts 	<ul style="list-style-type: none"> 02 to 08* 	<ul style="list-style-type: none"> Blank - #8-32, steel, zinc plated philslot BHMS (standard) 04 - #8-32, brass, nickel plated philslot BHMS 92 - #8-32, steel, zinc plated slotted BHMS 94 - #8-32, brass, nickel plated slotted BHMS 	<ul style="list-style-type: none"> C - C Filter P - Pi Filter 	<ul style="list-style-type: none"> 1.0 - 1,000 pF + 100%-0% 2.5 - 2,500 pF + 100%-0% 5.0 - 5,000 pF + 100%-0%

* Note: Standard is 02-08 poles. Available up to 16 poles. Consult factory for availability. Special electrical/mechanical configurations are available upon request from factory.