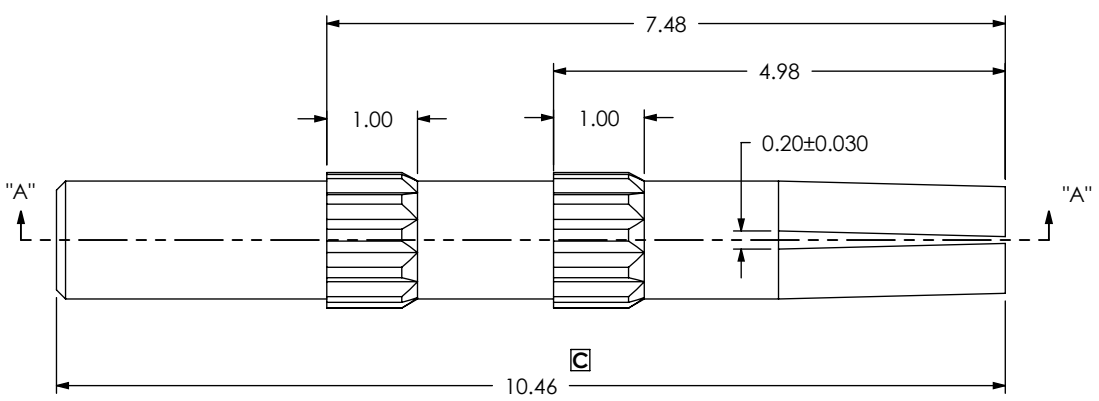


DO NOT SCALE FROM THIS PRINT



SMA-J-P-X-ST-PN4-SKT

GENDER
-J: JACK

TYPE
-P: PCB

PLATING SPECIFICATION
-H: HEAVY GOLD
-X: UNPLATED

TERMINATION
-PN4: PANEL MOUNT

ORIENTATION
-ST: STRAIGHT

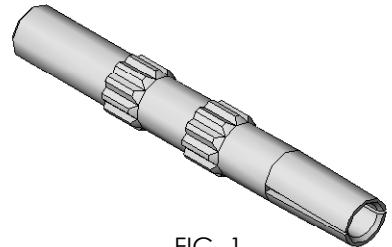
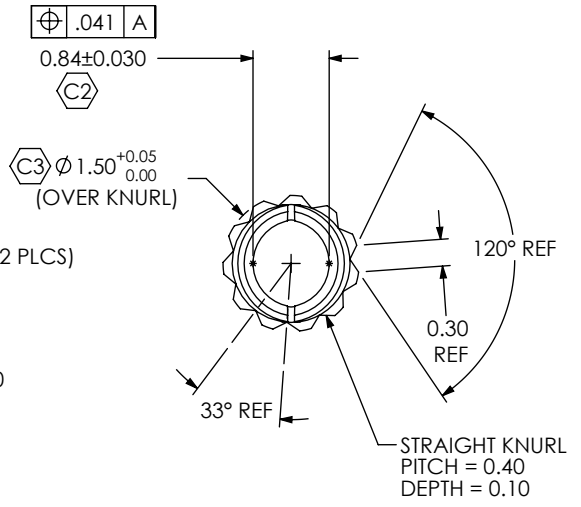
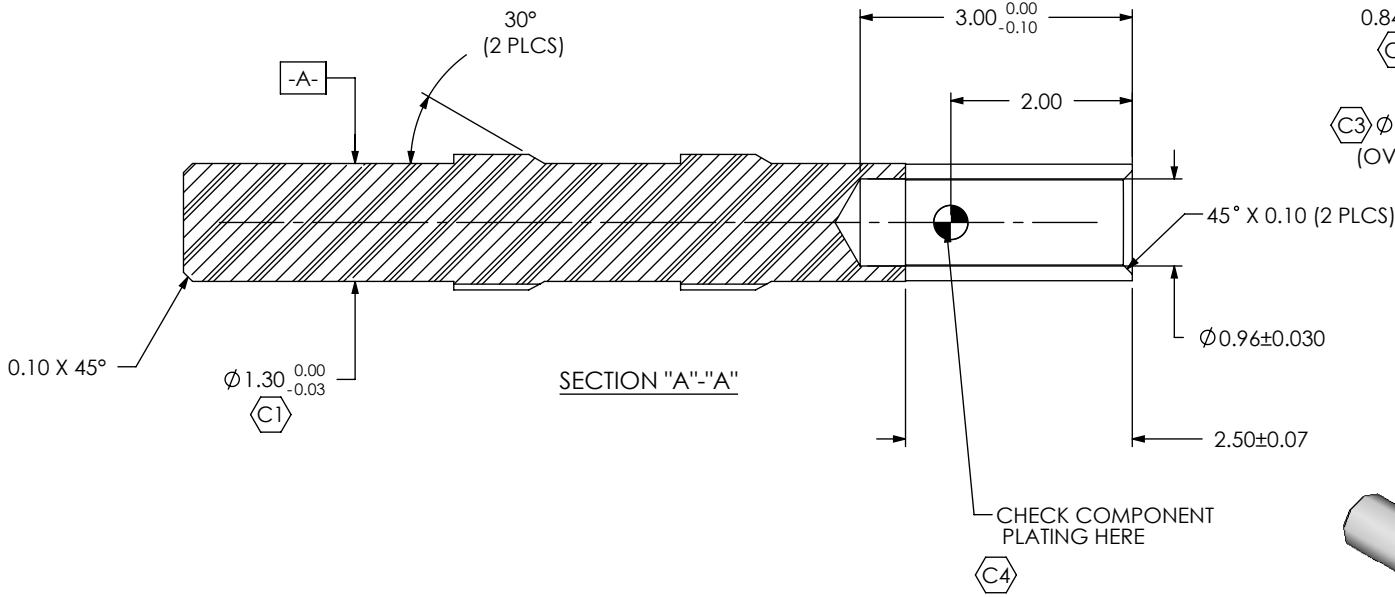


FIG. 1
SMA-J-P-X-ST-PN4-SKT

RF PLATING SPECIFICATIONS TABLE		
OPTION	PLATING	PLATING SURFACE AREA
-H	.000030" MIN. GOLD OVER .000050" MIN. NICKEL	0.09 SQ. IN.

- NOTES:
- ⊕ REPRESENTS A CRITICAL DIMENSION.
 - FABRICATED PARTS MUST BE FREE OF SCRATCHES, TOOL MARKS, ETC.
 - SUPPLIER TO REMOVE BURRS.
 - RoHS COMPLIANT.
 - SURFACE FINISH TO BE 10μ" RMS PRIOR TO PLATING.
 - SEE PLATING STANDARD CO-PL-FRM-7001-M.

c:\enterprisevault\DWG\MISC\MKTG\SMA-J-P-X-ST-PN4-SKT-MKT.SLDDRW

UNLESS OTHERWISE SPECIFIED, DIMENSIONS ARE IN MILLIMETERS. TOLERANCES ARE:
 DECIMALS ANGLES
 X.X: ±0.3 2°
 X.XX: ±0.05
 X.XXX: ±0.025

PROPRIETARY NOTE
 THIS DOCUMENT CONTAINS INFORMATION CONFIDENTIAL AND PROPRIETARY TO SAMTEC, INC. AND SHALL NOT BE REPRODUCED OR TRANSFERRED TO OTHER DOCUMENTS OR DISCLOSED TO OTHERS OR USED FOR ANY PURPOSE OTHER THAN THAT WHICH IT WAS OBTAINED WITHOUT THE EXPRESSED WRITTEN CONSENT OF SAMTEC, INC.

520 PARK EAST BLVD, NEW ALBANY, IN 47150
 PHONE: 812-944-6733 FAX: 812-948-5047
 e-Mail: info@SAMTEC.com code: 55322

MATERIAL: DO NOT SCALE DRAWING SHEET SCALE: 12:1
 BeCu C17300

HEAT TREAT:
 315°C 120 MINUTES

DESCRIPTION:
 SMA STRAIGHT, PANEL MOUNT JACK- 50 OHM

DWG. NO.
SMA-J-P-X-ST-PN4-SKT

BY: R MUSSER 01/28/2008 SHEET 1 OF 1