

Features

- 30 V/ μ S Slew Rate
- 10 nA Offset Current
- 330 nS Settling Time To 0.1%
- 500 KHz Full Power Bandwidth
- 12 MHz Typical Gain Bandwidth
- 20 M Ω Minimum Input Impedance
- Internally Compensated

Applications

- Video Amplifiers
- Pulse Amplifiers
- Signal Generators
- High Speed Sample-and-Hold Amplifiers

Description

The SP-2500/02/05 operational amplifiers are fast settling, low offset voltage and current, and high slew rate operational amplifiers. Their wide bandwidth and high input impedance combined with internal compensation make them excellent choices in high frequency signal conditioning applications.

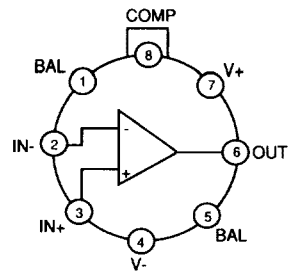
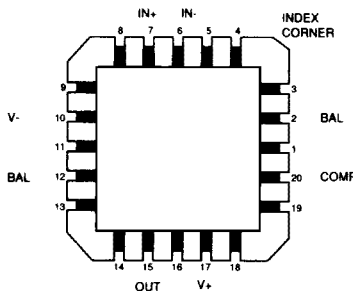
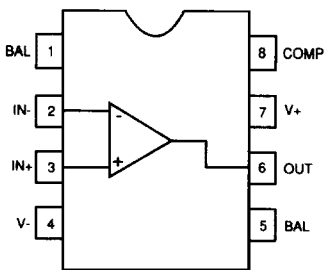
These devices are designed to allow additional compensation and offset trimming. A 100K Ω trim potentiometer is recommended for use between the balance pins (the wiper should be connected to V⁺).

The SP-2502 and SP-2505 are the relaxed specification military temperature range and the commercial temperature range of the SP-2500.

All versions are available in metal can and ceramic mini DIP packages as well as in die form. LCC packaged versions are also available.

4

Connection Diagrams



SP-2500/02/05

Precision, High Slew Rate Operational Amplifiers

Absolute Maximum Ratings

Voltage Between V^+ and V^- Terminals	40.0V	Operating Temperature Range	
Differential Input Voltage, V_d	$\pm 15.0V$	SP-2500	$-55^\circ C \leq T_A \leq 125^\circ C$
Internal Power Dissipation, P_d	300mW	Storage Temperature Range	$-65^\circ C \leq T_A \leq 150^\circ C$
Peak Output Current, I_p	50mA		

Electrical Characteristics: $V^+ = +15V$, $V^- = -15V$, $T_A = 25^\circ C$ unless otherwise specified in "Conditions".

SP-2500

Parameter	Symbol	Conditions	Min	Typ	Max	Units
Input Characteristics						
Offset Voltage	V_{OS}	$-55^\circ C \leq T_A \leq 125^\circ C$		2	5	mV
Offset Voltage Drift	$\Delta V_{OS}/\Delta T$	$-55^\circ C \leq T_A \leq 125^\circ C$; average		20	8	$\mu V/^\circ C$
Bias Current	I_B	$-55^\circ C \leq T_A \leq 125^\circ C$		100	200	nA
Offset Current	I_{OS}	$-55^\circ C \leq T_A \leq 125^\circ C$		10	25	nA
Input Impedance	Z_{in}	Guaranteed by Design	25	50		M Ω
Common Mode Range	V_{cm}	$-55^\circ C \leq T_A \leq 125^\circ C$	± 10.0		50	V
Transfer Characteristics						
Large Signal Voltage Gain	A_{VOL}	$R_L = 2K\Omega$, $V_o = \pm 10V$ $-55^\circ C \leq T_A \leq 125^\circ C$, $R_L = 2K\Omega$, $V_o = \pm 10V$	20K 15K	30K		V/V V/V
Common Mode Rejection Ratio	CMRR	$-55^\circ C \leq T_A \leq 125^\circ C$, $V_{cm} = \pm 10V$	80	90		dB
Unity Gain Bandwidth Product	GBW	$A_v > 10$		12		MHz
Output Characteristics						
Output Voltage Swing	V_o	$-55^\circ C \leq T_A \leq 125^\circ C$, $R_L = 2K\Omega$	± 10.0	± 12.0		V
Output Current	I_{OUT}	$V_o = \pm 10V$	± 10	± 20		mA
Full Power Bandwidth	FPBW	$V_o = \pm 10V$, $FPBW = (SR) (2\pi V_o)^{-1}$	350	500		KHz
Transient Response						
Rise Time	t_r	$R_L = 2K\Omega$, $C_L = 50pF$, $V_o = \pm 200mV$		25	50	nS
Overshoot	γ	$R_L = 2K\Omega$, $C_L = 50pF$, $V_o = \pm 200mV$		25	40	%
Slew Rate	SR	$R_L = 2K\Omega$, $C_L = 50pF$, $V_o = \pm 5V$	25	30		V/S
Settling Time to 0.1%	t_s	$R_L = 2K\Omega$, $C_L = 50pF$, $V_o = \pm 5V$		0.33		S
Power Supply						
Supply Current	I_s			4	6	mA
Power Supply Rejection Ratio	PSRR	$-55^\circ C \leq T_A \leq 125^\circ C$, $\Delta V_s = \pm 5V$	80	90		dB

Absolute Maximum Ratings

Voltage Between V ⁺ and V ⁻ Terminals	40.0V	Operating Temperature Range	
Differential Input Voltage, V _d	±15.0V	SP-2502	-55°C ≤ T _A ≤ 125°C
Internal Power Dissipation, P _d	300mW	Storage Temperature Range	-65°C ≤ T _A ≤ 150°C
Peak Output Current, I _p	50mA		

Electrical Characteristics: V⁺ = +15V, V⁻ = -15V, T_A = 25°C unless otherwise specified in "Conditions".

SP-2502

4

Parameter	Symbol	Conditions	Min	Typ	Max	Units
Input Characteristics						
Offset Voltage	V _{os}	-55°C ≤ T _A ≤ 125°C		4	8	mV
Offset Voltage Drift	ΔV _{os} /ΔT	-55°C ≤ T _A ≤ 125°C; average		20	10	μV/°C
Bias Current	I _b	-55°C ≤ T _A ≤ 125°C		125	250	nA
Offset Current	I _{os}	-55°C ≤ T _A ≤ 125°C		20	50	nA
Input Impedance	Z _{in}	Guaranteed by Design	25	50		MΩ
Common Mode Range	V _{cm}	-55°C ≤ T _A ≤ 125°C	±10.0		100	V
Transfer Characteristics						
Large Signal Voltage Gain	A _{vOL}	R _L = 2KΩ, V _o = ±10V -55°C ≤ T _A ≤ 125°C, R _L = 2KΩ, V _o = ±10V	15K 10K	25K		V/V V/V
Common Mode Rejection Ratio	CMRR	-55°C ≤ T _A ≤ 125°C, V _{cm} = ±10V	74	90		dB
Unity Gain Bandwidth Product	GBW	A _v > 10		12		MHz
Output Characteristics						
Output Voltage Swing	V _o	-55°C ≤ T _A ≤ 125°C, R _L = 2KΩ	±10.0	±12.0		V
Output Current	I _{OUT}	V _o = ±10V	±10	±20		mA
Full Power Bandwidth	FPBW	V _o = ±10V, FPBW = (SR) (2π V _p) ⁻¹	300	500		KHz
Transient Response						
Rise Time	t _r	R _L = 2KΩ, C _L = 50pF, V _o = ±200mV		25	50	nS
Overshoot	γ	R _L = 2KΩ, C _L = 50pF, V _o = ±200mV		25	50	%
Slew Rate	SR	R _L = 2KΩ, C _L = 50pF, V _o = ±5V	20	30		V/S
Settling Time to 0.1%	t _s	R _L = 2KΩ, C _L = 50pF, V _o = ±5V		0.33		S
Power Supply						
Supply Current	I _s			4	6	mA
Power Supply Rejection Ratio	PSRR	-55°C ≤ T _A ≤ 125°C, ΔV _s = ±5V	74	90		dB

SP-2500/02/05

Precision, High Slew Rate Operational Amplifiers

Absolute Maximum Ratings

Voltage Between V ⁺ and V ⁻ Terminals	40.0V	Operating Temperature Range	
Differential Input Voltage, V _d	±15.0V	SP-2505	0 °C ≤ T _A ≤ 75°C
Internal Power Dissipation, P _d	300mW	Storage Temperature Range	-65°C ≤ T _A ≤ 150°C
Peak Output Current, I _p	50mA		

Electrical Characteristics: V⁺ = +15V, V⁻ = -15V, T_A = 25°C unless otherwise specified in "Conditions".

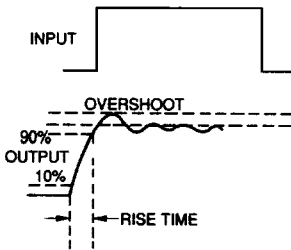
SP-2505

Parameter	Symbol	Conditions	Min	Typ	Max	Units
Input Characteristics						
Offset Voltage	V _{os}	0 °C ≤ T _A ≤ 75°C		4	8	mV
Offset Voltage Drift	ΔV _{os} /ΔT	0 °C ≤ T _A ≤ 75°C; average		20	10	μV/°C
Bias Current	I _b	0 °C ≤ T _A ≤ 75°C		125	250	nA
Offset Current	I _{os}	0 °C ≤ T _A ≤ 75°C		20	50	nA
Input Impedance	Z _{in}	Guaranteed by Design	25	50	100	MΩ
Common Mode Range	V _{cm}	0 °C ≤ T _A ≤ 75°C	±10.0			V
Transfer Characteristics						
Large Signal Voltage Gain	A _{vOL}	R _L = 2KΩ, V _o = ±10V 0 °C ≤ T _A ≤ 75°C, R _L = 2KΩ, V _o = ±10V	15K	25K		V/V
Common Mode Rejection Ratio	CMRR	0 °C ≤ T _A ≤ 75°C, V _{cm} = ±10V	74	90		dB
Unity Gain Bandwidth Product	GBW	A _v > 10		12		MHz
Output Characteristics						
Output Voltage Swing	V _o	0 °C ≤ T _A ≤ 75°C, R _L = 2KΩ	±10.0	±12.0		V
Output Current	I _{OUT}	V _o = ±10V	±10	±20		mA
Full Power Bandwidth	FPBW	V _o = ±10V, FPBW = (SR) (2π V _p) ⁻¹	300	500		KHz
Transient Response						
Rise Time	t _r	R _L = 2KΩ, C _L = 50pF, V _o = ±200mV		25	50	nS
Overshoot	γ	R _L = 2KΩ, C _L = 50pF, V _o = ±200mV		25	50	%
Slew Rate	SR	R _L = 2KΩ, C _L = 50pF, V _o = ±5V	20	30		V/S
Settling Time to 0.1%	t _s	R _L = 2KΩ, C _L = 50pF, V _o = ±5V		0.33		S
Power Supply						
Supply Current	I _s			4	6	mA
Power Supply Rejection Ratio	PSRR	0 °C ≤ T _A ≤ 75°C, ΔV _s = ±5V	74	90		dB

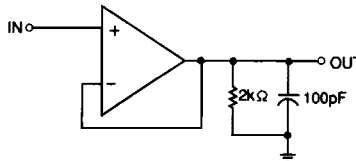
SP-2500/02/05

Precision, High Slew Rate Operational Amplifiers

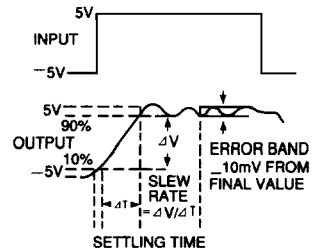
A.C. Performance



Transient Response



A.C. Test Circuit



Slew Rate/Settling Time

4

Ordering Information

When ordering the SP-2500/02/05, specify the package and screening according to the following :

SP 2 - 2500 - 2

Prefix: _____
 SP (SIPEX)

Generic Part # _____

PACKAGE : _____ SCREENING _____

- | | |
|------------------------|--|
| 1 - 14 pin ceramic DIP | -2 : -55 °C to 125 °C |
| 2 - Metal Can | -4 : -25 °C to 85 °C |
| 3 - 8 Pin Plastic DIP | -5 : 0 °C to 75 °C |
| 4 - 20 Pin LCC | -6 : 25 °C 100% D.C. Probe
(Dice Only) |
| 7 - 8-Pin CERDIP | /883 : -55 °C to 125 °C
Full Mil Processing |
| 0 - DICE | |

NOTES: 1. Not all package types and screening option combinations are available. Consult local sales office or factory for availability information.

2. Consult factory for special package or screening requirements.
3. Consult factory for 883 revision C compliant data sheet.
4. Consult factory for package mechanical dimensions.

