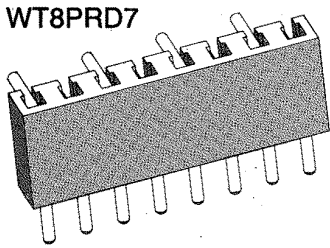


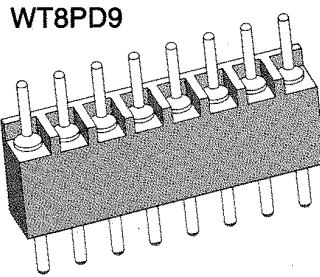
# 1 • ROW Connectors

PC Card to  
Cable to  
Board:  
Cable to Cable

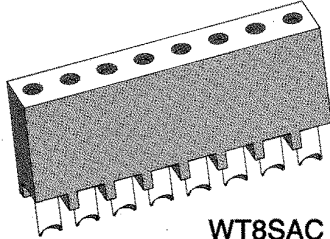
## WT-WT



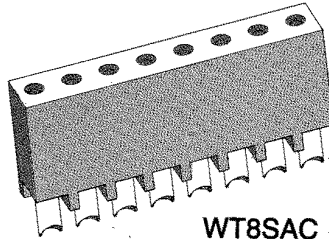
RIGHT-ANGLE PLUG



STRAIGHT PLUG



STRAIGHT RECEPTACLE



STRAIGHT RECEPTACLE

Examples:

RIGHT-ANGLE PLUG: WT 8 PRD7  
STRAIGHT PLUG: WT 8 PD9  
RECEPTACLE: WT 8 SAC

### PLUG

### RECEPTACLE

#### SERIES

WT = 1-row, straight-plug  
WT = 1-row, right-angle, plug

WT = 1-row, straight, receptacle  
WT = 1-row, right-angle, receptacle

#### NUMBER OF CONTACTS

3 through 22

3 through 22

#### TYPE OF CONTACTS

PC = Pin, straight, solder cup  
PD7 = Pin, straight, dip solder, .109  
PD9 = Pin, straight, dip solder, .140  
PD11 = Pin, straight, dip solder, .172  
PF3 = Pin, straight, flex-circuit, .050  
PF6 = Pin, straight, flex-circuit, .093  
PRD4 = Pin, right-angle, dip solder, .063  
PRD7 = Pin, right-angle, dip solder, .109  
PRD8 = Pin, right-angle, dip solder, .125  
PW40 = Pin, straight, wire wrap, .625

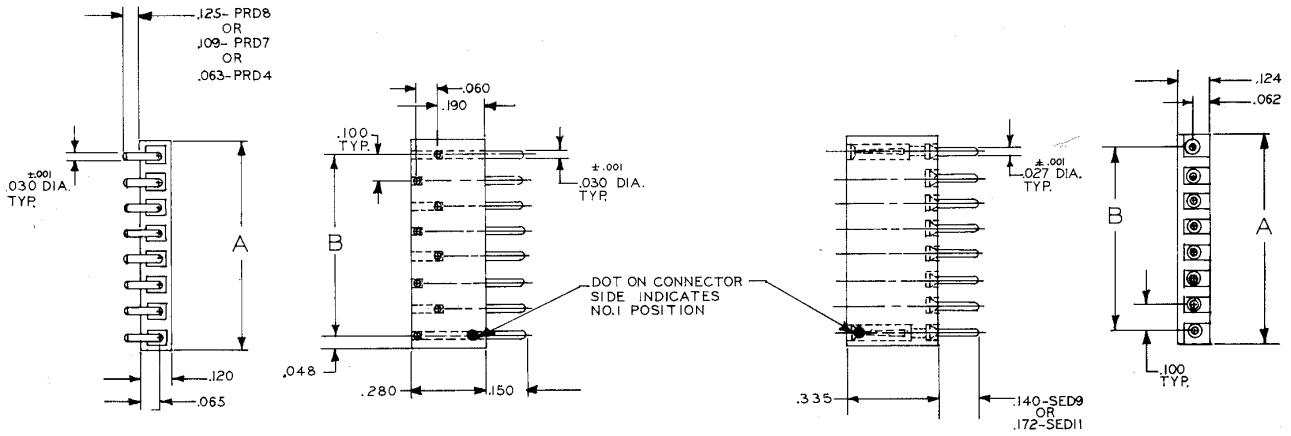
SAC = Socket, straight, solder cup  
SAD7 = Socket, straight, dip solder, .109  
SAD9 = Socket, straight, dip solder, .140  
SAD11 = Socket, straight, dip solder, .172  
SAD15 = Socket, straight, dip solder, .234  
SAF3 = Socket, straight, flex-circuit, .050  
SAF6 = Socket, straight, flex-circuit, .093  
SAP = Socket, straight, pin termination, .150, connector saver  
SAR4 = Socket, right-angle, dip solder, .062  
SAR7 = Socket, right-angle, dip solder, .109  
SAR9 = Socket, right-angle, dip solder, .140  
SARC = Socket, right-angle, solder cup  
SAW40 = Socket, straight, wire wrap, .625

#### TYPE OF HARDWARE

No hardware for this series.  
Omit any hardware code letters.

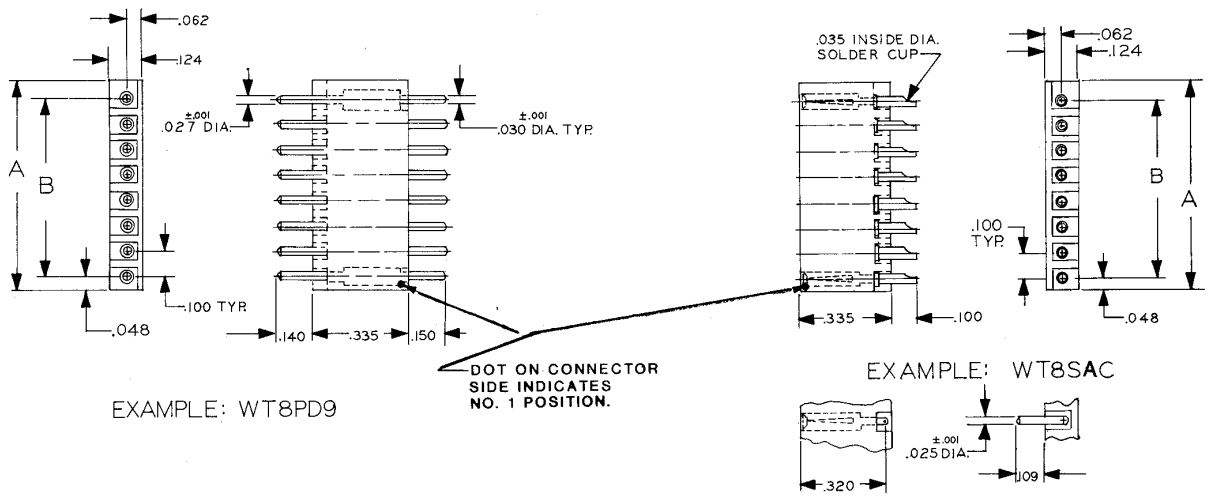
#### OPTIONS

- The thin outboard barriers are often removed at the factory due to their fragile nature.
- OPTION CODES: Add to the end of the part number. Example: WT10PC443-1 Call factory for additional codes.
- 443: Polarized Pin installed in contact position noted by dash number. See "Polarization" under next tab.
- 444: Contact position noted by dash number is left open (to mate with -443). See "Polarization" under next tab.
- B82: Termination face sealed against conformal coating.
- CD: Cross drilled connectors for hold down screws. See page W-8.
- D01: Pre-tin contact terminations. (Solder cup, wire wrap and flex circuit contacts are excluded.)
- D54: Combine B82 and D01 special codes.
- G69: Solder cups are fixed in an outward orientation, otherwise contacts can rotate.



EXAMPLE: WT8PRD4

EXAMPLE: WT8SAD9



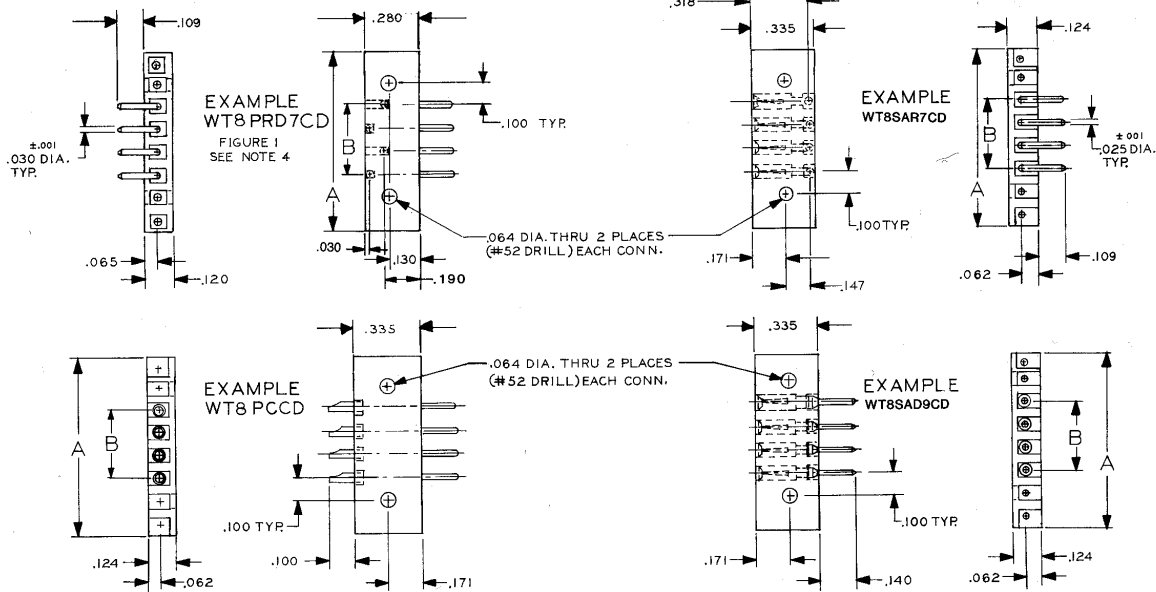
EXAMPLE: WT8PD9

EXAMPLE: WT8SAC

## WT-WT Dimensions

Number of Contacts	A	B
4	.396	.300
6	.596	.500
8	.796	.700
10	.996	.900
12	1.196	1.100
14	1.396	1.300
16	1.596	1.500
18	1.796	1.700
20	1.996	1.900

DATA SHEET WT3



- NOTES:
1. .064 DIA. HOLE FOR USE WITH # 0-80 SCREWS.
  2. SIZE OF CONNECTOR AND NUMBER OF CONTACTS DIFFER. REFER TO CODE CHART BELOW.
  3. USE OF CONTACTS IN OUTBOARD POSITIONS NOT RECOMMENDED.
  4. FIGURE 1 CONNECTOR BODY FOR RIGHT ANGLE PIN CONTACTS ONLY.

CROSS DRILLED CONNECTORS FOR HOLD DOWN SCREWS

## WT CODE CHART

### WT DIMENSIONS

SERIES	SIZE	FOR CONTACT TYPE	NO OF CONTACTS	A DIM	B DIM	SERIES	SIZE	FOR CONTACT TYPE	
WT	6	PC Pin, Solder Cup	2	.596	.100	WT	6	SAC Socket, Solder Cup Closed Entry	
		PD9 Pin, Dip Solder .140 Extension							
	8	PD11 Pin, Dip Solder .172 Extension	4	.796	.300		8	8	SAD9 Socket, Dip Solder Closed Entry, .140 Ext.
		PRD4 Pin, Right-Angle Dip Solder, .063 Ext.	6	.996	.500				10
	12	PRD7 Pin, Right-Angle, Dip Solder, .109 Ext.	8	1.196	.700		12	SAR7 Socket, Right-Angle Closed Entry, .109 Ext.	
	14	PRD8 Pin, Right-Angle, Dip Solder, .125 Ext.	10	1.396	.900		14		
	16		12	1.596	1.100		16		
	18		14	1.796	1.300		18		
20		16	1.996	1.500	20				