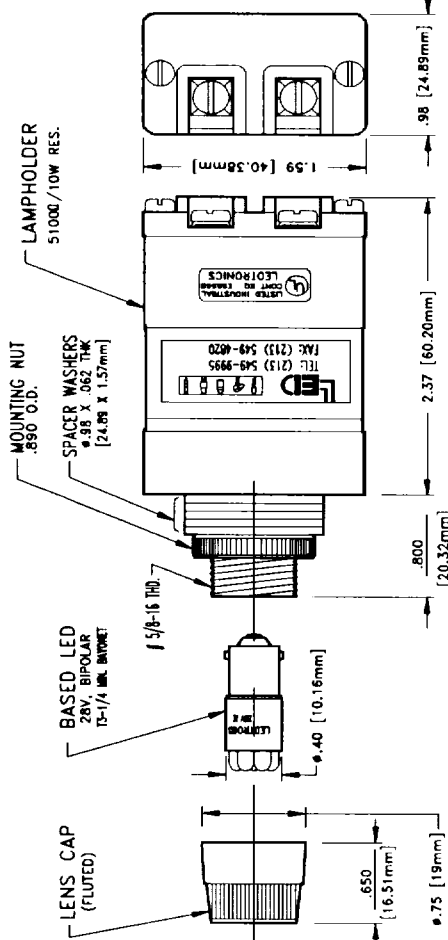


LTR	REVISION	DATE	APPD
	ORIGINAL ISSUE	7.18.91	R. KUCHTA



- NOTES:
- RPNL-1008 SERIES RELAMPABLE LED PILOT LIGHTS ARE DESIGNED TO BE DIRECTLY INTERCHANGEABLE WITH GE ET16 PILOT LIGHTS IN 140VDC APPLICATIONS ONLY.
 - RPNL-1008 SERIES HAS MFG. HOLE OF ϕ .625. IT CAN BE USED IN PANEL THICKNESS RANGE OF .040 TO .280.
 - RPNL-1008 SERIES USES A 28V BIPOLAR DC LED CLUSTER LAMP AND IS NOT INTERCHANGEABLE WITH INCANDESCENT NO. 1835.
 - FOR DIRECT VOLTAGE APPLICATIONS REQUIRING 48VDC, 120VAC AND ANY OTHER VOLTAGES, PLEASE CALL FACTORY FOR COMPLETE PART NUMBERS.
 - LAMPHOLDER UL LISTED INDUSTRIAL CONTROL EO E68568.

LEDTRONICS PART NO.	LED RADIATION COLOR	LENS CAP PART NO.	BASED LED PART NO.	HOLDER PART NO.
RPNL-1008-001A	ULTRA RED 660nm	RPNL-1020-022A	B3127CR6-28V/30-BP	MRL-130L/140L
RPNL-1008-002A	HI-EFF RED 635nm	RPNL-1020-022A	B3127CR5-28V/30-BP	MRL-130L/140L
RPNL-1008-003A	ORANGE 605nm	RPNL-1020-044A	B3127C05-28V/30-BP	MRL-130L/140L
RPNL-1008-004A	YELLOW 585nm	RPNL-1020-044A	B3127C15-28V/30-BP	MRL-130L/140L
RPNL-1008-005A	LIME YELLOW 570nm	RPNL-1020-001A	B3127C15-28V/30-BP	MRL-130L/140L
RPNL-1008-006A	HI-EFF GREEN 565nm	RPNL-1020-066A	B3127C05-28V/30-BP	MRL-130L/140L
RPNL-1008-007A	DEEP GREEN 555nm	RPNL-1020-066A	B3127C05-28V/30-BP	MRL-130L/140L
RPNL-1008-008A	BLUE 470nm	RPNL-1020-088A	B3127C05-28V/30-BP	MRL-130L/140L
RPNL-1008-026A	WHITE 635/565nm	RPNL-1020-101A	B3127C05-28V/30-BP	MRL-130L/140L

TITLE
RPNL-1008-00XA

DRAWING NO. DR. R. KUCHTA DATE 7.18.91

MATERIAL AS SHOWN

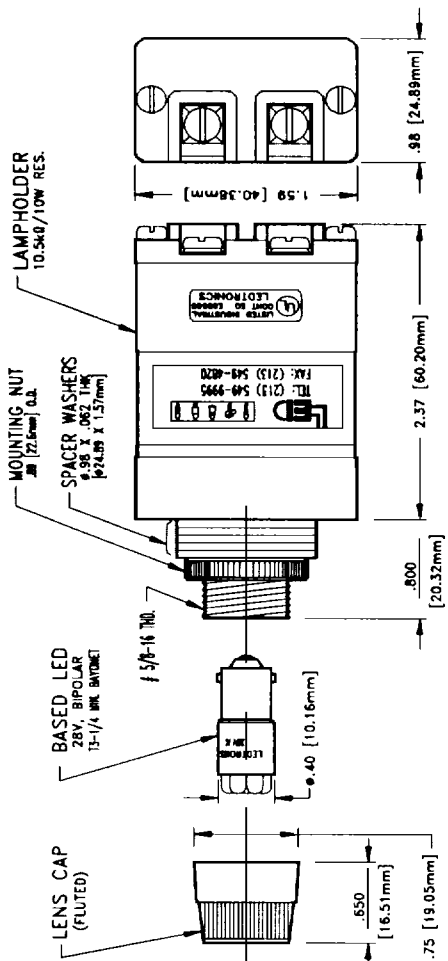
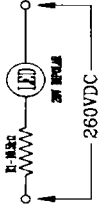
FINISH USED ON

CODE IDENT NO. SCALE 8Z410 1:1 SHEET 1 of 1

LEDTRONICS
4009 Pacific Coast Hwy.
Torrance, CA 90505

REPLACES UNLESS OTHERWISE SPECIFIED
DIMENSIONS IN INCHES PER ANSI-Y14.5
.XXX ±.010
.XX ±.025
ANGLES ± 0°.30'
FRACT. ± 1/32

LTR	REVISION	DATE	APPD
	ORIGINAL ISSUE	7.18.91	R. KUCHTA



- NOTES:
- RPNL-1022 SERIES RELAMPABLE LED PILOT LIGHTS ARE DESIGNED TO BE DIRECTLY INTERCHANGEABLE WITH GE ET16 PILOT LIGHTS IN 250VDC APPLICATIONS ONLY.
 - RPNL-1022 SERIES HAS MFG. HOLE WITH ϕ .625 [15.87mm] THRU. IT CAN BE USED IN PANEL THICKNESS RANGE OF .040 [1.01mm] TO .280 [7.11mm].
 - RPNL-1022 SERIES USES A 28VDC, 7-LED CLUSTER LAMP AND IS NOT INTERCHANGEABLE WITH NO. 1835 INCANDESCENT BULB USED IN ET16.
 - FOR DIRECT VOLTAGE APPLICATIONS REQUIRING 48VDC, 120VAC AND ANY OTHER VOLTAGES, PLEASE CALL FACTORY FOR COMPLETE PART NUMBERS.
 - LAMPHOLDER UL LISTED INDUSTRIAL CONTROL EO E68568.

LEDTRONICS PART NO.	LED RADIATION COLOR	LENS CAP PART NO.	BASED LED PART NO.	HOLDER PART NO.
RPNL-1022-001A	ULTRA RED 660nm	RPNL-1020-022A	B3127CR6-28V/30-BP	MRL-250L/260L
RPNL-1022-002A	HI-EFF RED 635nm	RPNL-1020-022A	B3127CR5-28V/30-BP	MRL-250L/260L
RPNL-1022-003A	ORANGE 605nm	RPNL-1020-044A	B3127C05-28V/30-BP	MRL-250L/260L
RPNL-1022-004A	YELLOW 585nm	RPNL-1020-044A	B3127C15-28V/30-BP	MRL-250L/260L
RPNL-1022-005A	LIME YELLOW 570nm	RPNL-1020-001A	B3127C15-28V/30-BP	MRL-250L/260L
RPNL-1022-006A	HI-EFF GREEN 565nm	RPNL-1020-066A	B3127C05-28V/30-BP	MRL-250L/260L
RPNL-1022-007A	DEEP GREEN 555nm	RPNL-1020-066A	B3127C05-28V/30-BP	MRL-250L/260L
RPNL-1022-008A	BLUE 470nm	RPNL-1020-088A	B3127C05-28V/30-BP	MRL-250L/260L
RPNL-1022-026A	WHITE 635/565nm	RPNL-1020-101A	B3127C05-28V/30-BP	MRL-250L/260L

TITLE
RPNL-1022-00XA

DRAWING NO. DR. R. KUCHTA DATE 7.18.91

MATERIAL AS SHOWN

FINISH USED ON

CODE IDENT NO. SCALE 8Z410 1:1 SHEET 1 of 1

LEDTRONICS
4009 Pacific Coast Hwy.
Torrance, CA 90505

REPLACES UNLESS OTHERWISE SPECIFIED
DIMENSIONS IN INCHES PER ANSI-Y14.5
.XXX ±.010
.XX ±.025
ANGLES ± 0°.30'
FRACT. ± 1/32