

10 Watts Power - Wireless System Performance

Frequency: DC - 2.0 , DC - 8.0, DC - 12.4 and DC - 18.0 GHz units available

Attenuation Values: 1 - 40 dB as noted

Attenuation Accuracy:	DC-12.4 GHz	12.4-18.0 GHz
1 - 6 dB	± 0.3 dB	± 0.5 dB
7 - 20 dB	± 0.5 dB	± 0.75 dB
21 - 40 dB	± 0.7 dB	± 1.0 dB

Impedance: 50 Ohms

VSWR: 1.06 + 0.02 f (GHz) max

Power: 10 Watts average @ 40C derated linearly to 1 Watt @ 125C

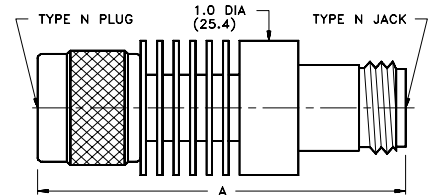
Peak Power: 100 Watts except Model 477 series is 5Kilowatts

Operating Temperature Range: -54 °C to +125 °C

Finish: Black Anodized Aluminum with Stainless Steel Connectors

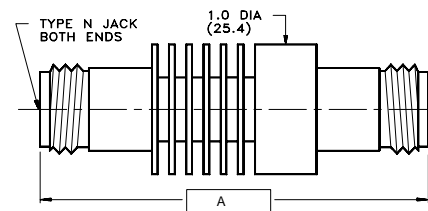


DC - 2.0 GHz	399 Series	Model Number
Male/Female	Female / Female	Male / Male
ATT-0477-XX-NNN-07	ATT-477F-XX-NNN-07	ATT-477M-XX-NNN-07
Attenuation Value= XX, Select 01 thru 40 dB in 1 dB Increments		
10 Watts - Wireless System Performance		



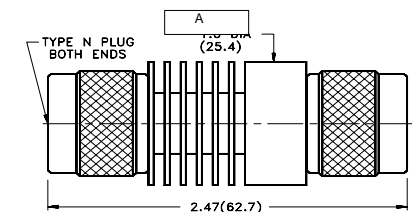
Attenuation Value	Length A
1 - 6 dB	2.38 (60.5)
7 - 40 dB	2.82 (71.6)

DC - 8.0 GHz	398 Series	Model Number
Male/Female	Female / Female	Male / Male
ATT-0398-XX-NNN-07	ATT-398F-XX-NNN-07	ATT-398M-XX-NNN-07
Attenuation Value= XX, Select 01 thru 40 dB in 1 dB Increments		
10 Watts - Wireless System Performance		



Attenuation Value	Length A
1 - 6 dB	2.32 (58.9)
7 - 40 dB	2.75 (69.9)

DC - 12.4 GHz	392 Series	Model Number
Male/Female	Female / Female	Male / Male
ATT-0392-XX-NNN-07	ATT-392F-XX-NNN-07	ATT-392M-XX-NNN-07
Attenuation Value= XX, Select 01 thru 40 dB in 1 dB Increments		
10 Watts - Wireless System Performance		



Attenuation Value	Length A
1 - 6 dB	2.48 (63.0)
7 - 40 dB	2.91 (73.9)

DC - 18.0 GHz	397 Series	Model Number
Male/Female	Female/Female	Male/Male
ATT-0397-XX-NNN-07	ATT-397F-XX-NNN-07	ATT-397M-XX-NNN-07
Attenuation Value = XX, Select 01 thru 40 dB in 1 dB increments		
10 Watts - Wireless System Performance		