



VERTICAL / HORIZONTAL/BASE MOUNT TOROIDAL COILS **AIPT-92**

FEATURES:

- High Saturation Material
- Wide Inductance Range
- High Current Capability
- Long Term Stability
- High Reliability
- Low DC Resistance

OPTIONS:

- Bulk Packaging is Standard
- Mounting: (V)ertical is Standard, (H)orizontal and (B)ase Mounting Available
- Inductance: Optional Values Available

COMMON APPLICATIONS:

- Switching Regulators
- Automotive Systems
- Power Amplifiers
- Power Supplies
- SCR and Triac Controls
- Speaker Crossover Networks
- EMI/RFI Suppression
- Filters

STANDARD SPECIFICATIONS

Part Number	L μH Typical	IDC Max Amps	ETop (V-μSec)	Energy Storage (μJ)	L μH No DC	20KHz Test mV No DC	RDC Ω Max	Coil Size Code	Base Mount Package	Lead Diameter (in) ±.003
AIPT-92 Series										
AIPT-92-20-2.0()	20	2.0	52	40	32.8	33	.060	H	—	.020
AIPT-92-25-2.6()	25	2.6	30	85	20.7	22	.403	A	BM1	.020
AIPT-92-50-2.6()	50	2.6	50	169	45.7	45	.071	B	BM2	.020
AIPT-92-100-2.6()	100	2.6	90	338	94.1	90	.100	C	BM3	.020
AIPT-92-35-2.6()	35	2.6	55	118	28.4	36	.037	B	BM2	.025
AIPT-92-70-3.0()	70	3.0	85	315	61.0	73	.052	C	BM3	.025
AIPT-92-150-3.0()	150	3.0	140	653	146.0	140	.087	D	BM4	.025
AIPT-92-285-3.0()	285	3.0	300	1283	260.0	340	.140	E	BM5	.025
AIPT-92-450-3.0()	450	3.0	425	2025	436.3	500	.200	F	—	.025
AIPT-92-100-3.6()	100	3.6	130	648	90.7	110	.045	D	BM4	.032
AIPT-92-165-4.0()	165	4.0	240	1320	152.0	260	.070	E	BM5	.032
AIPT-92-270-4.0()	270	4.0	350	2160	263.9	400	.100	F	—	.032
AIPT-92-400-4.0()	40	4.0	70	320	37.9	57	.027	C	BM3	.032
AIPT-51-22-5.0()	22	5.0	44	275	20.3	37	.020	G	—	.032
AIPT-92-100-5.0()	100	5.0	200	1250	90.7	180	.034	E	BM5	.042
AIPT-92-170-5.0()	170	5.0	300	2125	159.7	310	.050	F	—	.042
AIPT-92-55-5.0()	55	5.0	100	688	54.9	88	.023	D	BM4	.042
AIPT-92-95-7.0()	95	7.0	225	2328	96.0	200	.025	F	—	.051
AIPT-92-55-7.0()	55	7.0	150	1348	49.1	100	.017	E	BM5	.051
AIPT-92-55-10.0()	55	10.0	175	2750	55.9	120	.013	F	—	.064

PHYSICAL CHARACTERISTICS

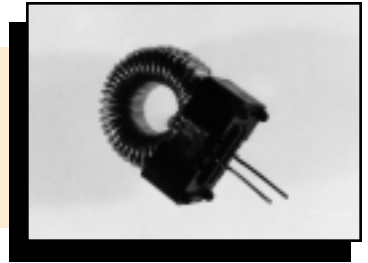
REFER TO PAGE 67

TECHNICAL INFORMATION:

- Testing: (Equivalent acceptable)
Inductance: Measured at 20KHz
Typical inductance occurs @ IDC and ETop values shown
Inductance increases with voltage
RDC: QuadTech 1880 Milliohm meter
- Temperature range: -30°C to +130°C
- Marking: EIA 5 band color code
- Mounting: Add (V), (H), (B) as Suffix to Part Number

Note: All specifications subject to change without notice.

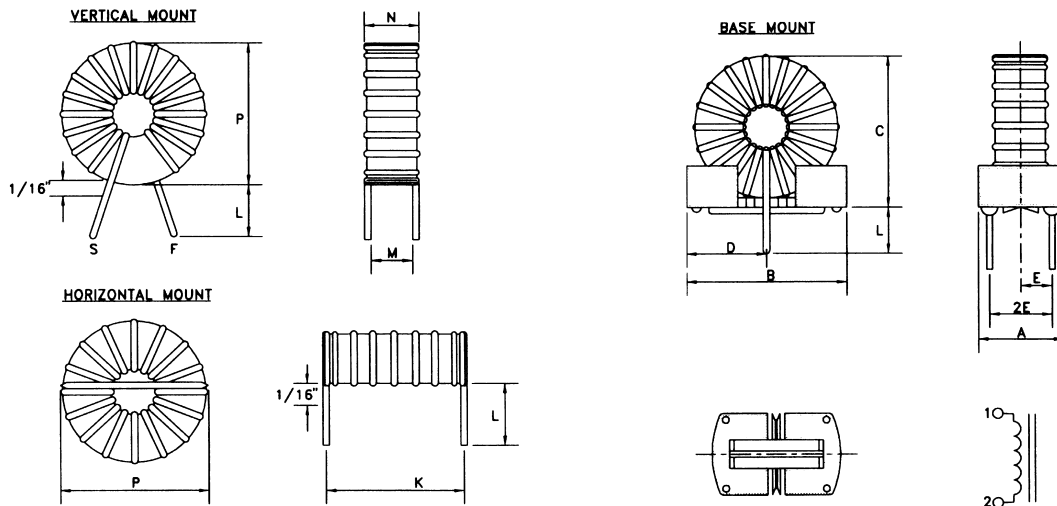
VERTICAL / HORIZONTAL / BASE MOUNT
TOROIDAL COILS
AIPT-92



STANDARD SPECIFICATIONS

Base Mount	Meas.	A	B	C	D	E	Coil Size	Meas.	P	N	L	M	K
		Nom±.005	Nom	Typical	Nom±.005	Nom			Typical	Nom	Typical	Nom	Typical
BM-1	(in.) (mm)	.340 8.64	.580 14.73	.650 16.57	.29 7.37	.110 2.79	A	(in.) (mm)	0.55 13.97	0.25 6.35	3.75 9.53	.180 4.57	- -
BM-2	(in.) (mm)	.450 11.43	.650 16.51	.700 17.78	.325 8.26	.150 3.91	B	(in.) (mm)	0.70 17.78	0.38 9.65	.375 9.53	.280 7.11	.530±0.50 13.46±1.27
BM-3	(in.) (mm)	.450 11.73	.830 21.03	.950 24.13	.415 10.54	.150 3.91	C	(in.) (mm)	0.85 21.59	0.41 10.41	.375 9.53	.280 7.11	.720±0.50 18.29±1.27
BM-4	(in.) (mm)	.600 15.24	.950 24.13	1.10 27.94	.475 12.07	.225 5.72	D	(in.) (mm)	1.05 26.27	0.55 13.97	.375 9.53	.400 10.16	.840±0.20 21.24±0.51
BM-5	(in.) (mm)	.700 17.78	1.25 33.02	1.40 35.56	.625 15.88	.250 6.35	E	(in.) (mm)	1.40 35.56	.700 17.78	.375 9.53	.500 12.7	1.10±.100 25.65±2.54
							F	(in.) (mm)	1.65 41.91	.700 17.78	.375 .953	.500 12.7	- -
							G	(in.) (mm)	0.85 21.59	0.33 8.38	.875 22.23	-	.730±.050 18.29±1.27
							H	(in.) (mm)	0.64 16.26	0.28 7.11	.875 22.23	-	.530±0.50 13.46±1.27

PHYSICAL CHARACTERISTICS: Refer to Size Chart Above



Leads tinned to within 1/16" of Core

Dimensions: Inches (mm)



29 Journey • Aliso Viejo, CA 92656 • USA
(949) 448-7070 • FAX: (949) 448-8484
E-MAIL: abinfo@abracon.com • INTERNET ADDRESS: www.abracon.com

