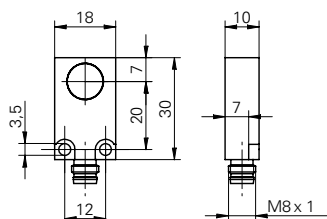


Inductive linear sensors

IWFM 18

sample drawing



general data

mounting type	shielded
measuring distance Sd	0 ... 4 mm

voltage - / current output

linearity error	$\pm 4\%$ (S = 0,5 ... 4 mm Full Scale)
temperature drift	$\pm 5\%$ (Full Scale)

voltage output

linearity error	$\pm 0,4\%$
-----------------	-------------

electrical data

voltage supply range +Vs	15 ... 30 VDC
short circuit protection	yes
reverse polarity protection	yes

voltage - / current output

current consumption max.	40 mA
output signal	0 ... 10 V / 4 ... 20 mA
load resistance	> 1000 Ohm (Uout) / 330 ... 1000 Ohm (Iout)
voltage drop Vd	< 7,2 VDC (Iout)

voltage output

current consumption max.	20 mA
output signal	0 ... 10 VDC

mechanical data

type	rectangular
housing material	brass nickel plated
dimension	18 mm
housing length	30 mm
connection types	connector M8

ambient conditions

operating temperature	-10 ... +70 °C
protection class	IP 67

sample picture



Inductive linear sensors

IWFM 18

order reference	resolution	repeat accuracy	output circuit	response time (factory characteristic)	linearity error	temperature drift
IWFM 18L9504/S35A	< 0,005 mm	< 0,01 mm	voltage - / current output	< 2 ms	± 4 % (S = 0,5 ... 4 mm Full Scale)	± 5 % (Full Scale)
IWFM 18L9505/S35A	< 0,001 mm	< 0,05 mm	voltage - / current output	< 30 ms	± 4 % (S = 0,5 ... 4 mm Full Scale)	± 5 % (Full Scale)
IWFM 18U7504/S35A	< 0,005 mm	< 0,01 mm	voltage output	< 2,5 ms	± 0,4 %	-